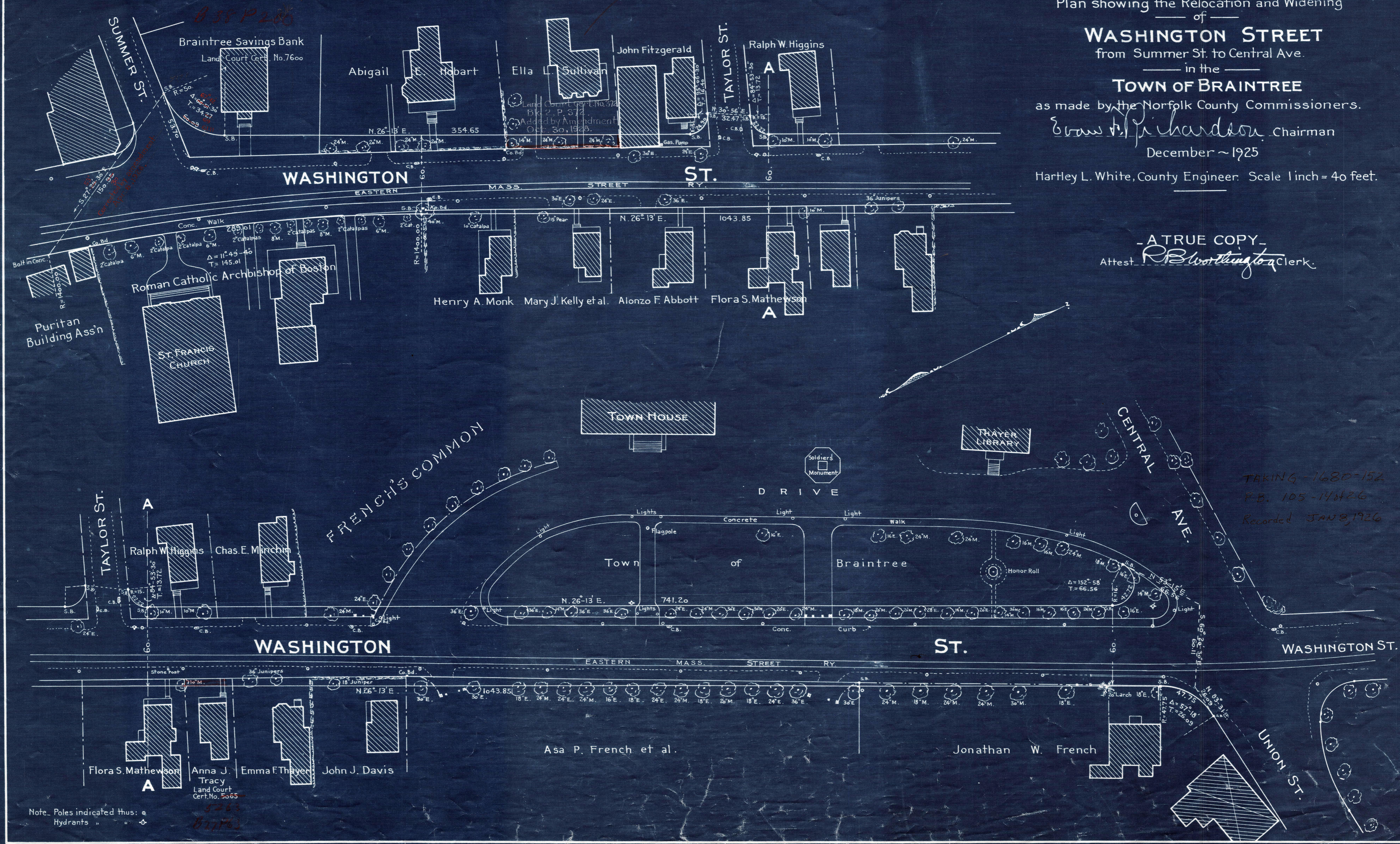


Plan showing the Relocation and Widening  
of  
**WASHINGTON STREET**  
from Summer St. to Central Ave.  
in the  
**TOWN OF BRAINTREE**  
as made by the Norfolk County Commissioners.  
*Erwin P. Richardson*, Chairman  
December ~ 1925  
Hartley L. White, County Engineer. Scale 1 inch = 40 feet.



- A TRUE COPY -  
Attest: *R. B. Worthington* Clerk.

TAKING - 1680-152  
P.B. 105-14426  
Recorded JAN 8, 1926

Note. Poles indicated thus: ○  
Hydrants " " ⊕