

Plan showing the Relocation and Widening of POND STREET, AVON

from Central St. to West Main St.
as made by the Norfolk County Commissioners

Grant Richardson Chairman.

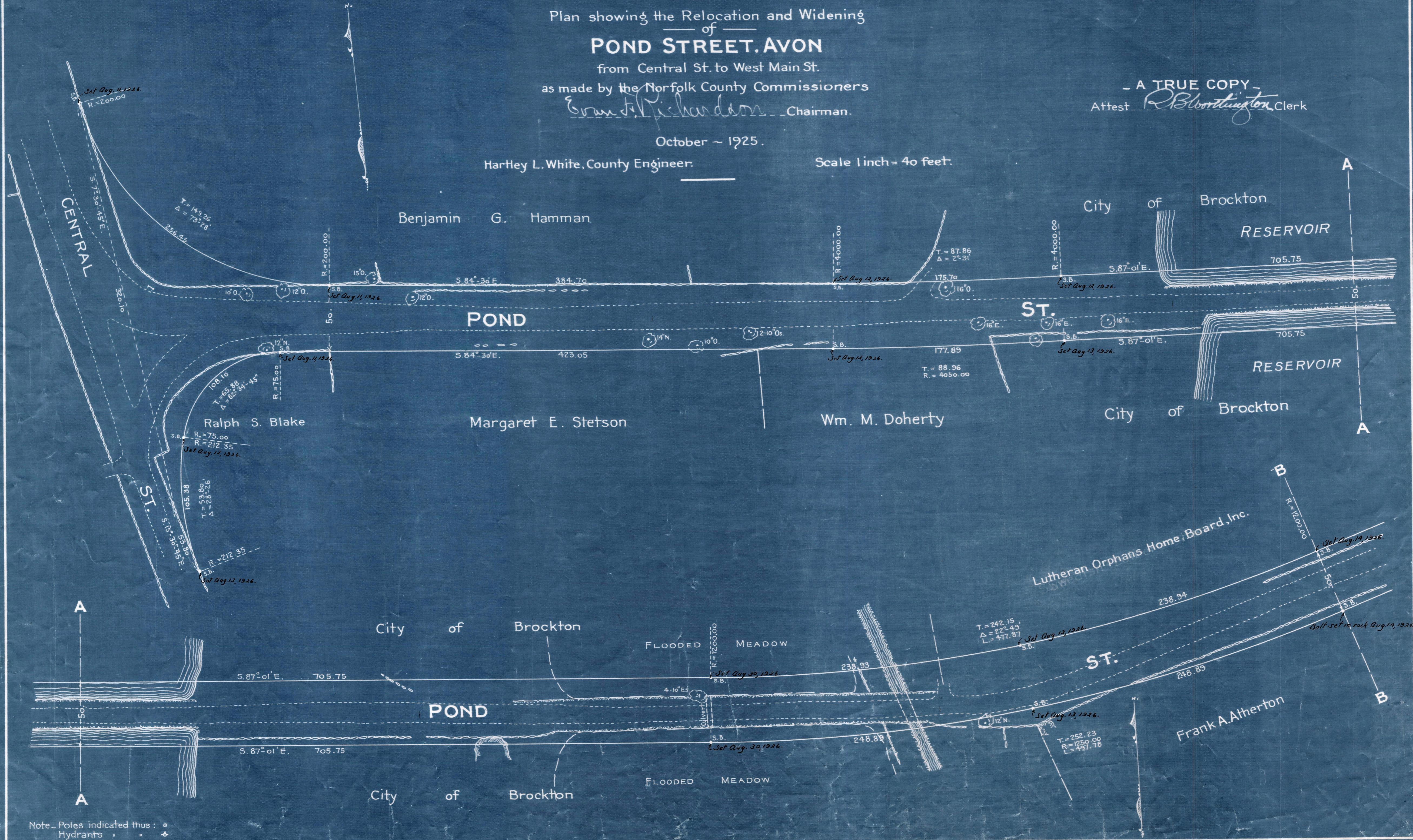
October - 1925.

Hartley L. White, County Engineer.

Scale 1 inch = 40 feet.

- A TRUE COPY -

Attest *R. B. Worthington* Clerk



Note - Poles indicated thus : ○
Hydrants * * * * *