

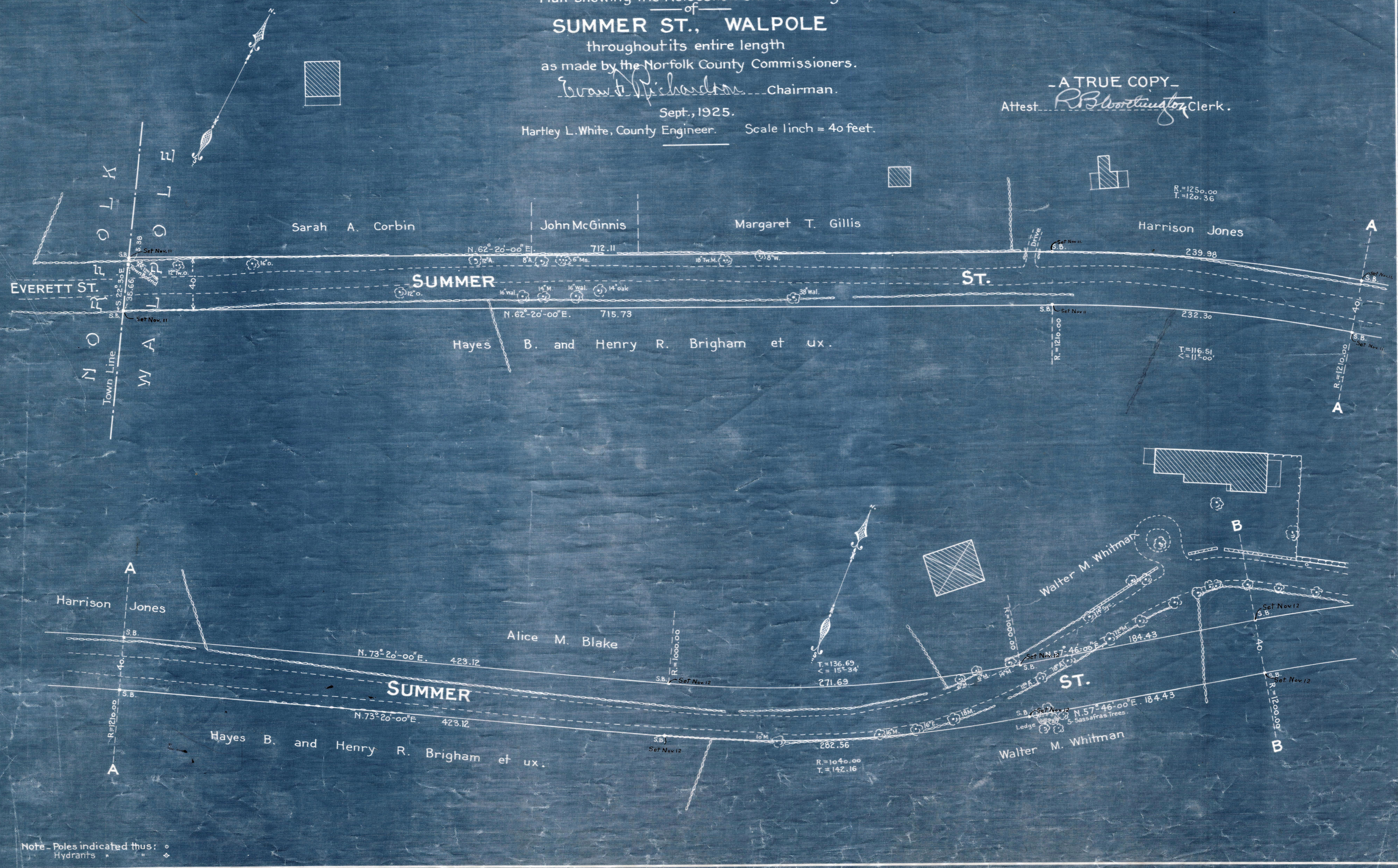
Plan showing the Relocation and Widening
of
SUMMER ST., WALPOLE
throughout its entire length
as made by the Norfolk County Commissioners.

Ernest Richardson Chairman.

Sept., 1925.

Hartley L. White, County Engineer. Scale 1 inch = 40 feet.

- A TRUE COPY -
Attest *R. B. Worthington* Clerk.



Note - Poles indicated thus:
Hydrants " " " "