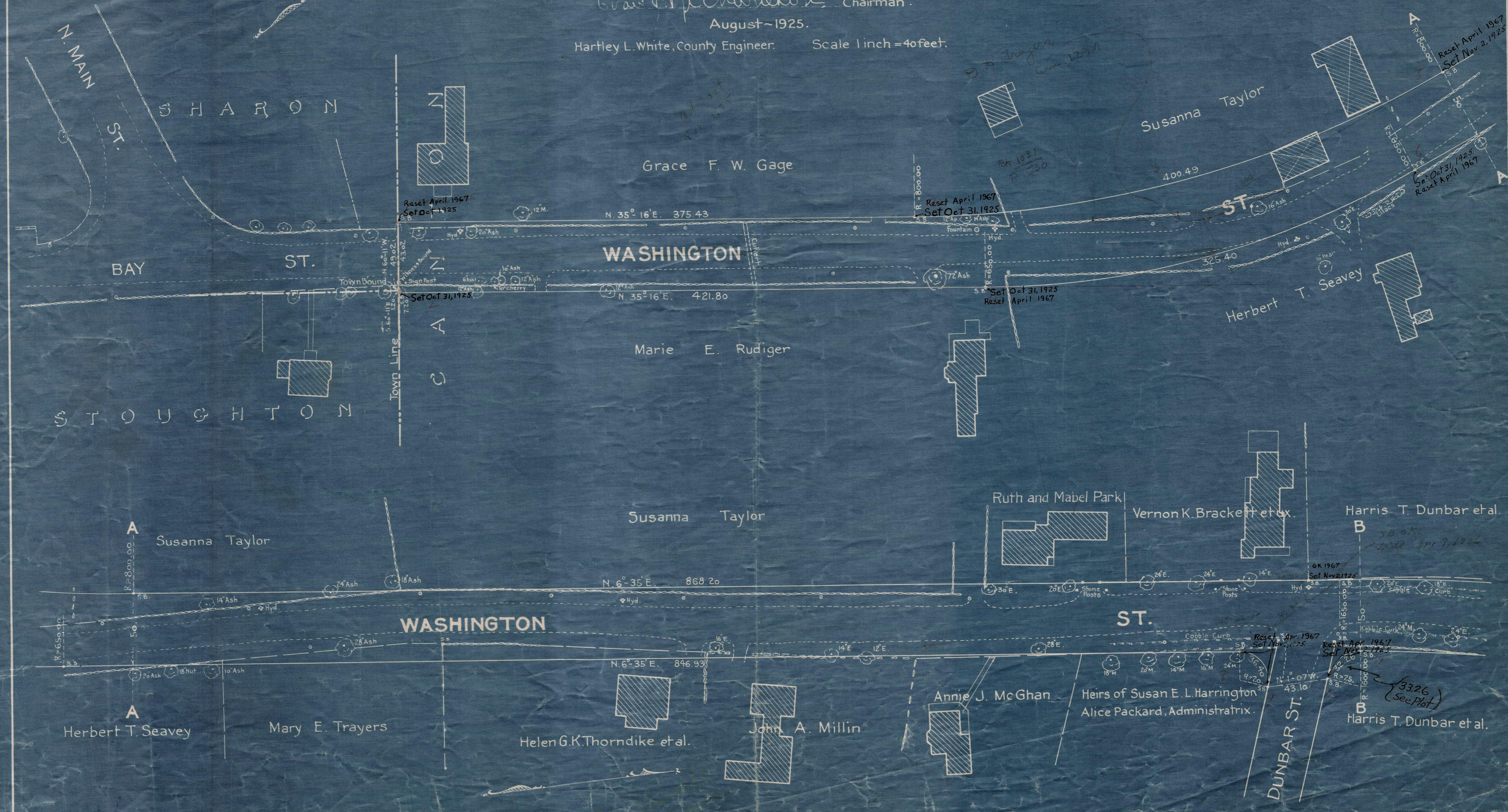


Plan showing the Relocation and Widening of
WASHINGTON ST., CANTON,
from the Sharon and Stoughton Town Lines to High St.
as made by the Norfolk County Commissioners.

Ernest Richardson Chairman.
August ~ 1925.
Hartley L. White, County Engineer. Scale 1 inch = 40 feet.

A TRUE COPY
Attest *Willard E. Everett* Assistant Clerk.



Note. Poles indicated thus: .
Hydrants " .