

Plan showing the Relocation and Widening

HIGH ST., WESTWOOD

between
The Walpole Town Line and Pond St.
as made by the Norfolk County Commissioners.

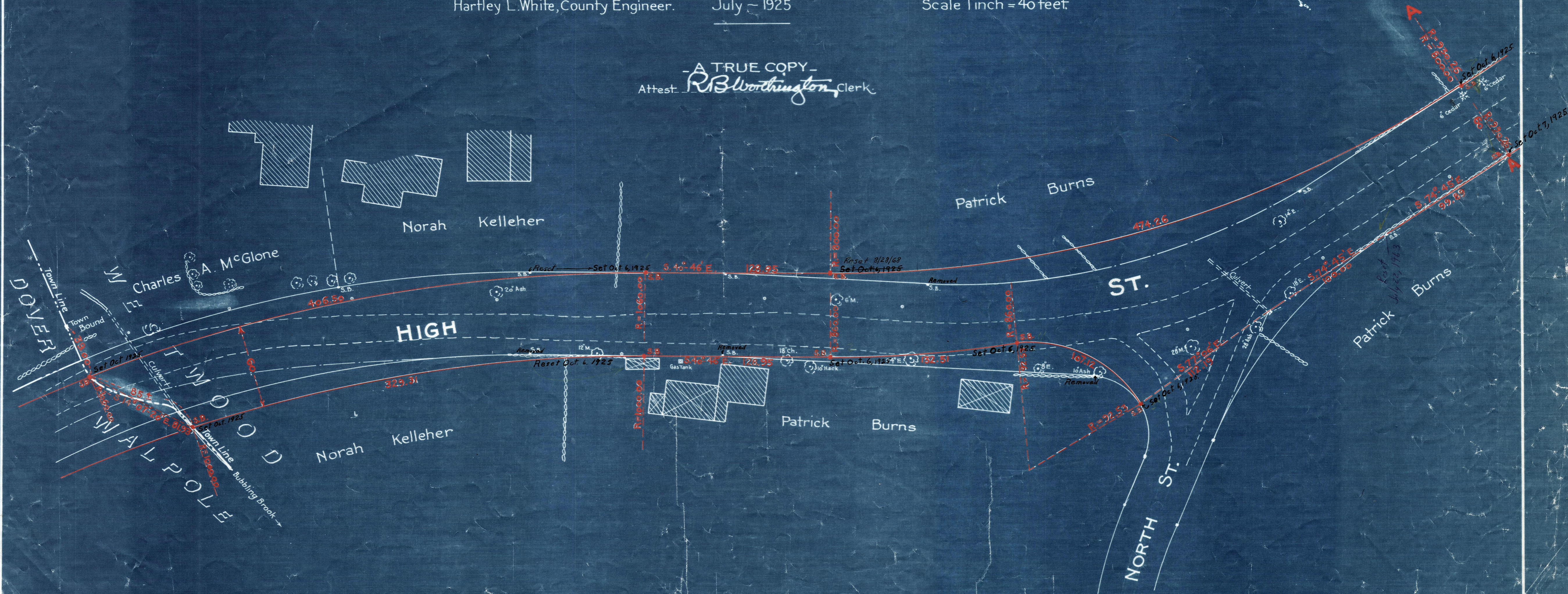
Wm. H. Richardson Chairman.

Hartley L. White, County Engineer.

July - 1925

Scale 1 inch = 40 feet

- A TRUE COPY -
Attest *R. B. Worthington*, Clerk.



NOTE -
Poles indicated thus •