

Plan showing the Relocation and Widening
of
HIGH ST., WESTWOOD
between
The Walpole Town Line and Pond St.
as made by the Norfolk County Commissioners.

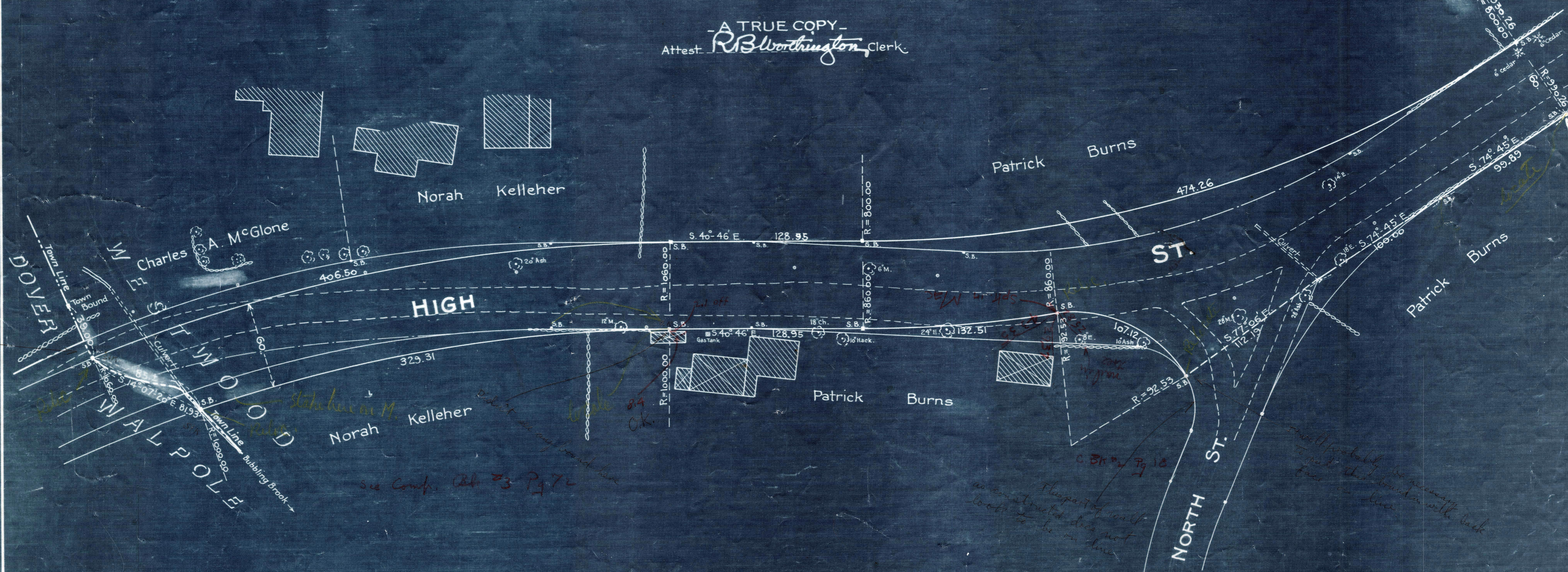
Grant Richardson Chairman.

Hartley L. White, County Engineer.

July - 1925

Scale 1 inch = 40 feet.

A TRUE COPY.
Attest: *R. B. Worthington*, Clerk.



NOTE - Poles indicated thus ○