

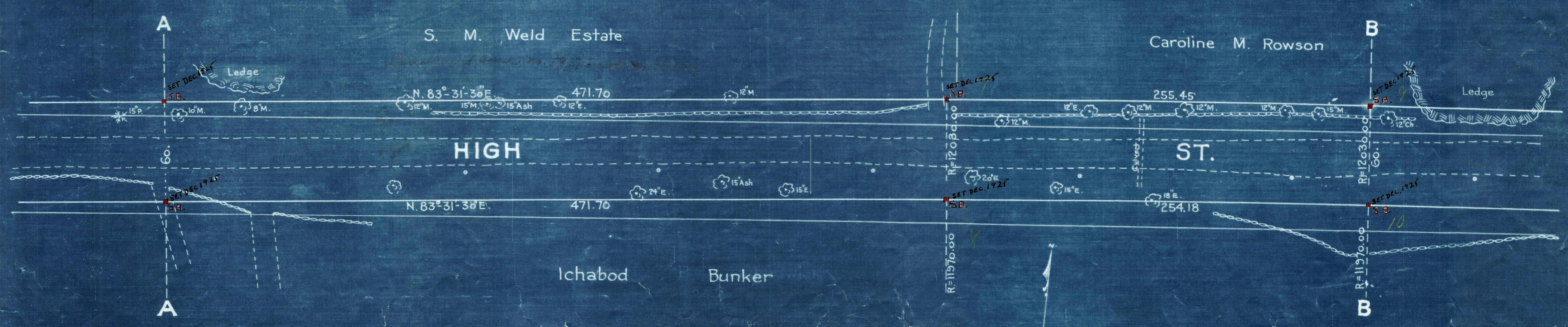
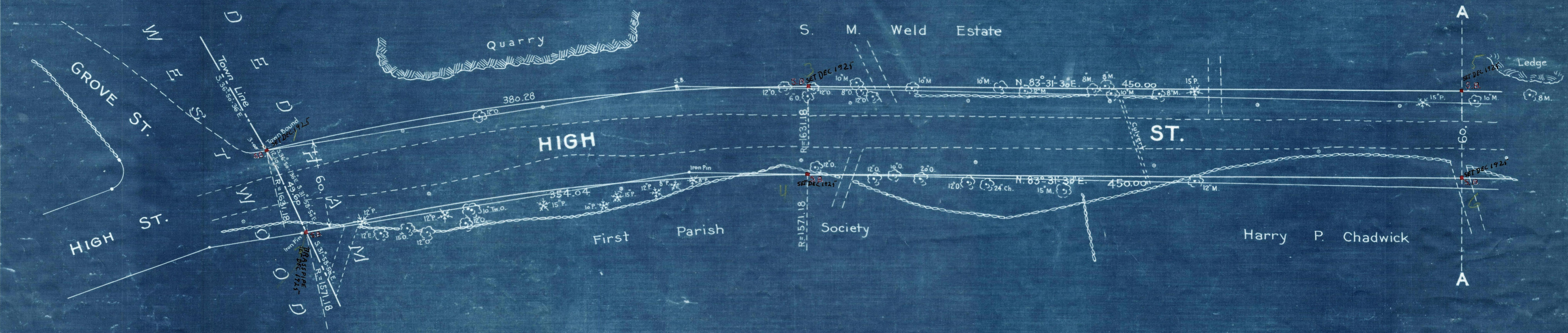
Plan showing the Relocation and Widening
of
HIGH ST., DEDHAM
between
the Westwood Town Line and Haven St.
as made by the Norfolk County Commissioners.

Erwin Richardson Chairman.

Hartley L. White, County Engineer. July - 1925.

Scale 1 inch = 40 feet.

- A TRUE COPY -
Attest *R. B. Worthington* Clerk.



NOTE:-
Poles indicated thus: o