

LEGEND

- — — — — LINE OF ALTERATION
- - - - - EXISTING RIGHT OF WAY LINE
- — — — — ABUTTER PROPERTY LINE
- SB/DH — STONE BOUND WITH DRILL HOLE
- SB/LPT — STONE BOUND WITH LEAD PLUG AND TACK
- FND — FOUND
- — STONE BOUND SET
- CHB — CHORD BEARING
- CHD — CHORD DISTANCE
- PCC — POINT OF COMPOUND CURVATURE
- PRC — POINT OF REVERSE CURVATURE



SHARON CFI L.P.
ASSESSORS MAP 47 PORTION OF BLOCKS 4-1 AND 4-2
DEED BOOK 24956, PAGE 335
ASSESSORS MAP 57 BLOCKS 22 AND 24
DEED BOOK 25422, PAGE 564
ASSESSORS MAP 57 BLOCKS 4, 5, 6
DEED BOOK 25069, PAGE 463
DEED BOOK 26158, PAGE 497
 (VOLUNTARY WITHDRAWAL FROM LAND COURT REGISTRATION SYSTEM
 ASSESSORS MAP 57 BLOCKS 4, 5, 6)

PARCEL 1 - AREA = 35,090± S.F.

LIMIT OF 2009 COUNTY ALTERATION

PARCEL 2 - AREA = 14,440± S.F.

POINT OF BEGINNING (PARCEL 2)

1962 COUNTY LAYOUT - VARIABLE WIDTH

N/F
 OLD POST ROAD HOLDINGS LLC
 ASSESSORS MAP 57 LOT 17
 DEED BOOK 25631 PAGE 362

N/F
 SHARON CFI L.P.
 ASSESSORS MAP 57 LOT 21
 DEED BOOK 25069 PAGE 463

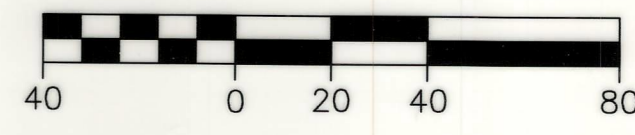
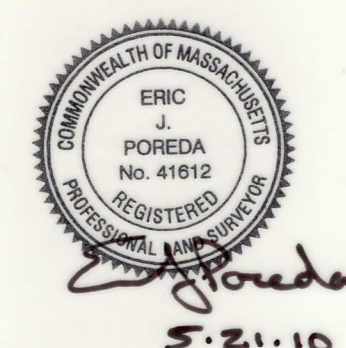
N/F
 FRANK N. GOBBI REVOCABLE TRUST
 ASSESSORS MAP 47 LOT 6
 DEED BOOK 4779 PAGE 78

OLD POST ROAD
 1962 COUNTY LAYOUT - VARIABLE WIDTH

R=865.00
 L=294.17'
 Δ=19°29'06"

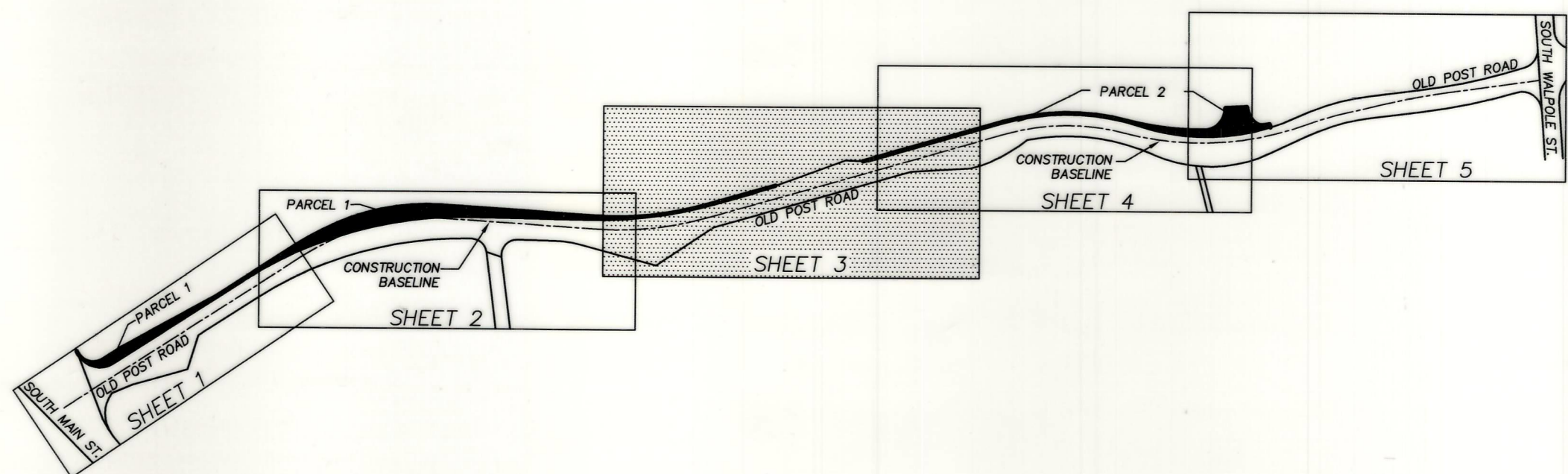
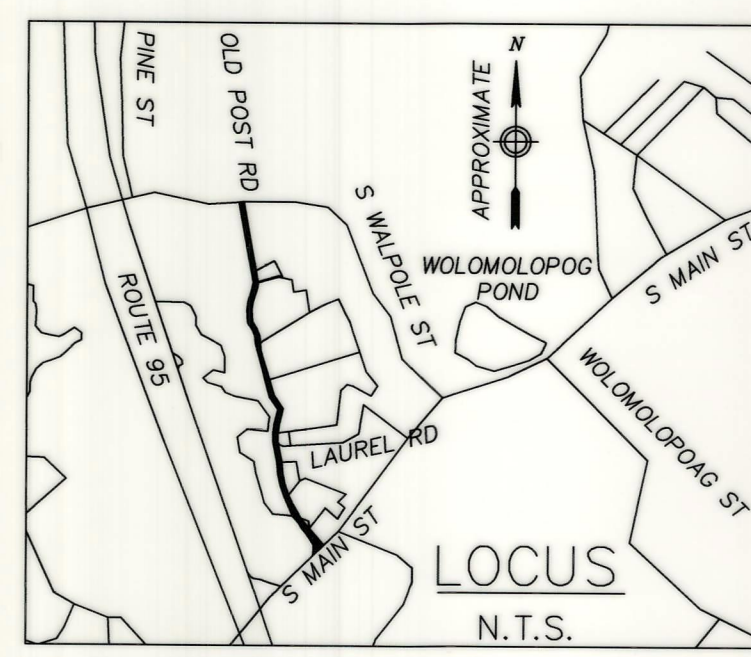
N/F
 FRANK N. GOBBI REVOCABLE TRUST
 ASSESSORS MAP 47 LOT 6
 DEED BOOK 4779 PAGE 78

A TRUE COPY
 Attest: *[Signature]* Clerk.



FOR CONTINUATION SEE SHEET 2

FOR CONTINUATION SEE SHEET 4



| | |
|---|-----------------------|
| COLER & COLANTONIO INC ENGINEERS AND SCIENTISTS 781-982-5400 Fax: 781-982-5490 101 Accord Park Drive Norwell, MA 02061-1685 | DATE: MARCH 19, 2009 |
| | COMP./DESIGN: BPR/WJD |
| | CHECK: NIL/EJP |
| | DRAWN: BPR/JPC/WJD |
| | SCALE: 1"=40' |
| JOB NO.: F:\Project\MA\Sharon\OldPostRoad\SharonLifestyleCenter\DWG | |
| DWG NO.: AltPlan2008.dwg | |