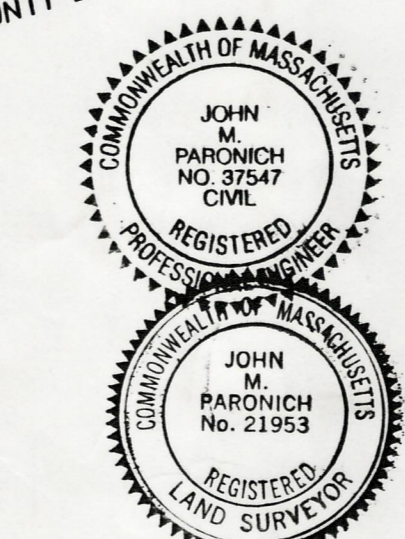
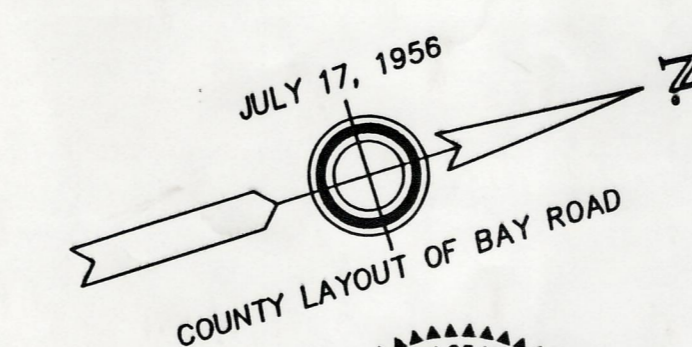
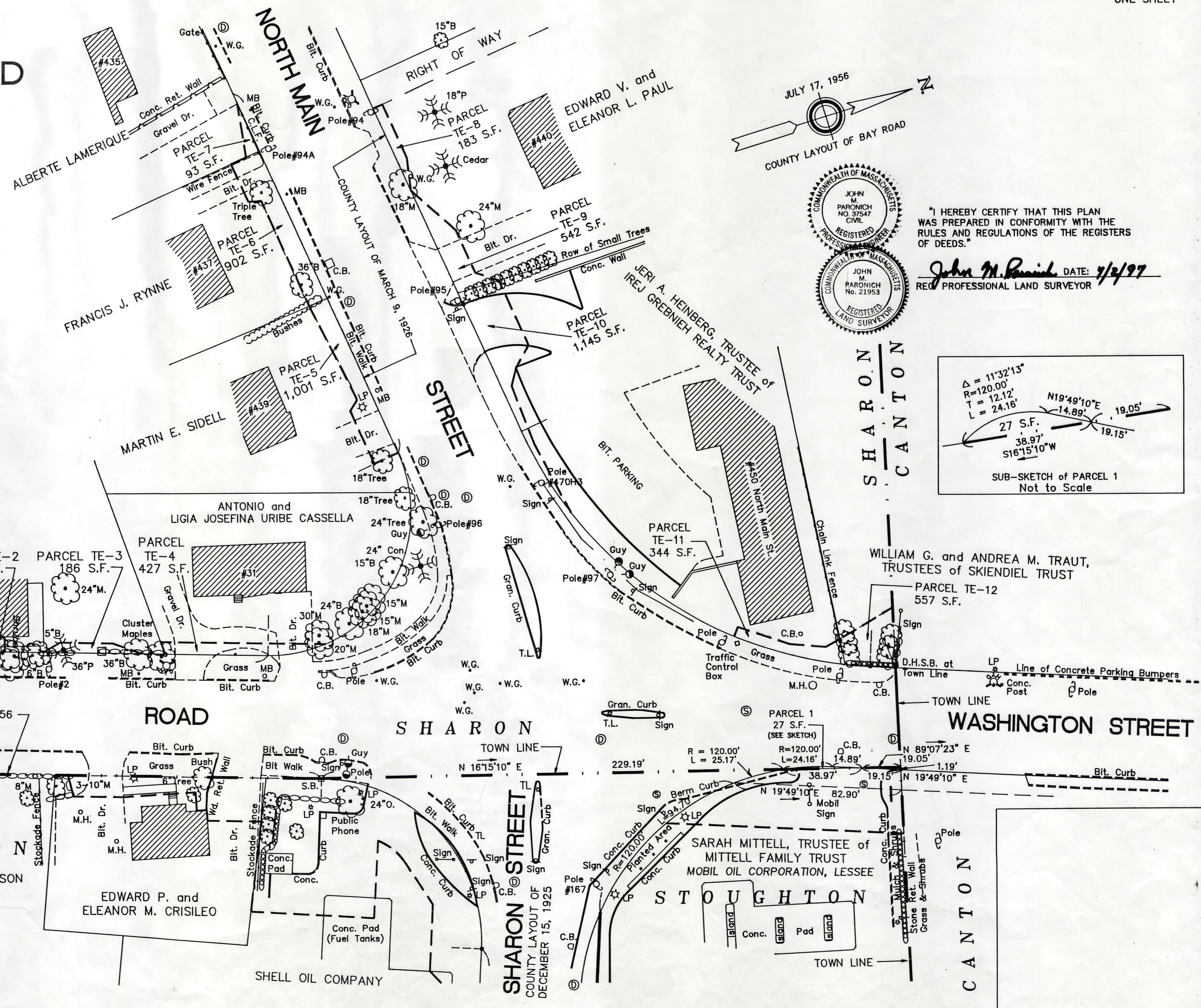
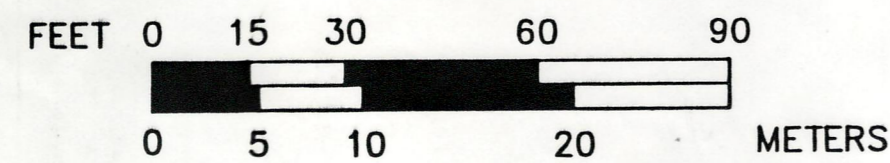


Plan showing the Relocation
of
SHARON STREET, BAY ROAD
and **NORTH MAIN STREET,**
SHARON

between
THEIR INTERSECTION AND POINTS ABOUT
400 FEET SOUTHERLY AND WESTERLY
as made by the Norfolk County Commissioners
by Return dated JULY 2, 1997
Scale: 1 inch = 30 feet
John M. Paronich, County Engineer

John M. Paronich CHAIRMAN



"I HEREBY CERTIFY THAT THIS PLAN
WAS PREPARED IN CONFORMITY WITH THE
RULES AND REGULATIONS OF THE REGISTERS
OF DEEDS."
John M. Paronich DATE: 7/2/97
REG. PROFESSIONAL LAND SURVEYOR

