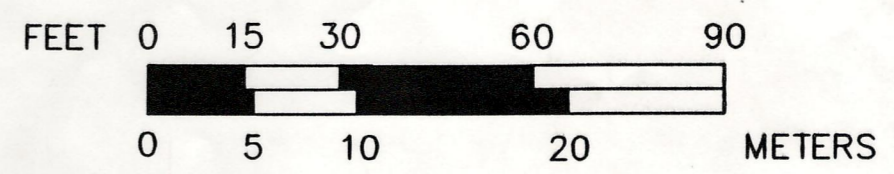
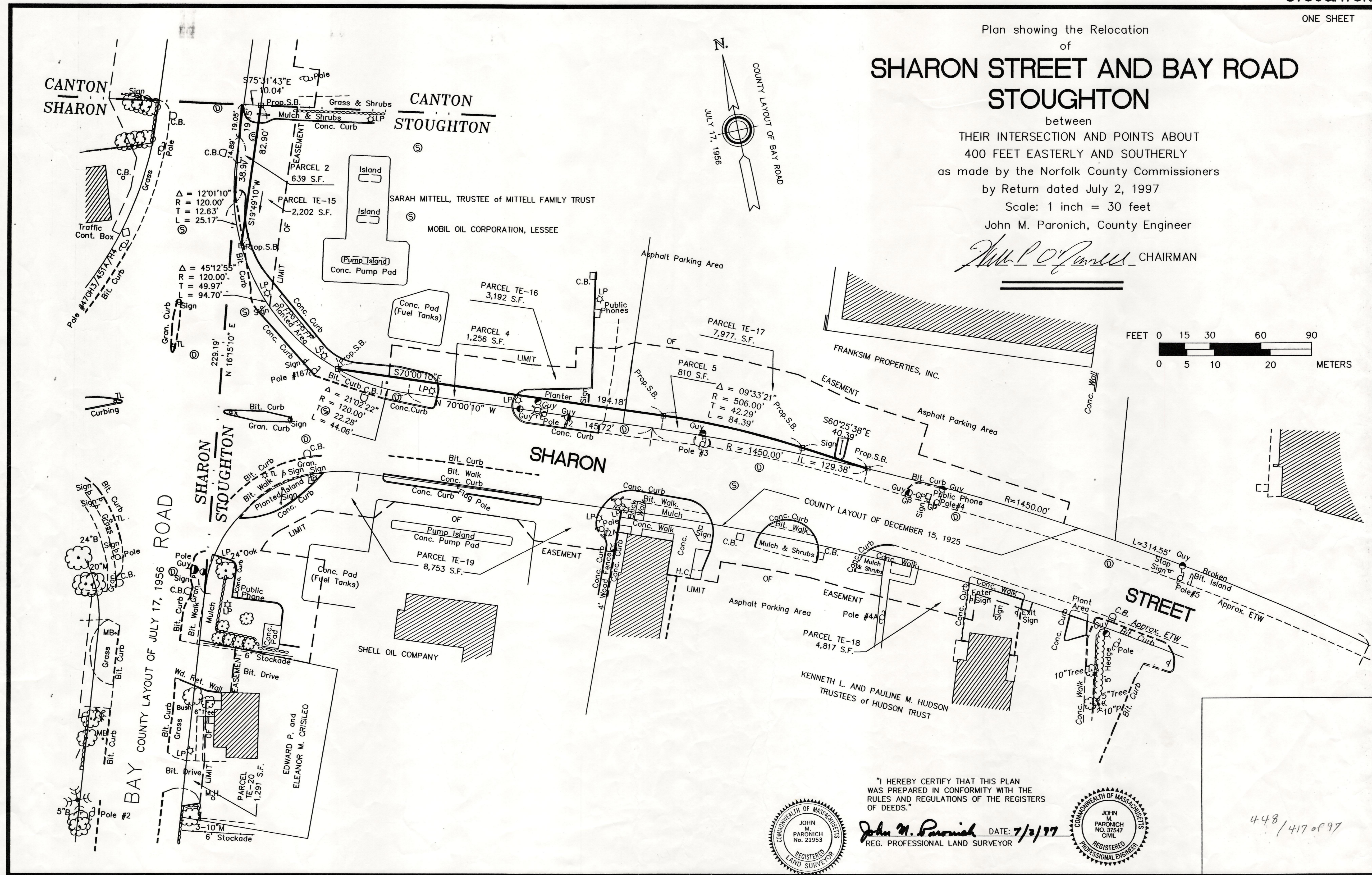


Plan showing the Relocation
of
SHARON STREET AND BAY ROAD
STOUGHTON

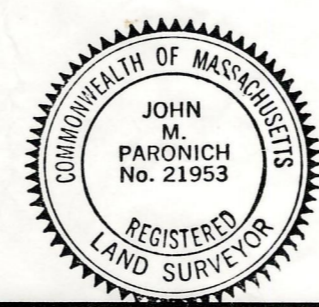
between
THEIR INTERSECTION AND POINTS ABOUT
400 FEET EASTERLY AND SOUTHERLY
as made by the Norfolk County Commissioners
by Return dated July 2, 1997
Scale: 1 inch = 30 feet

John M. Paronich, County Engineer

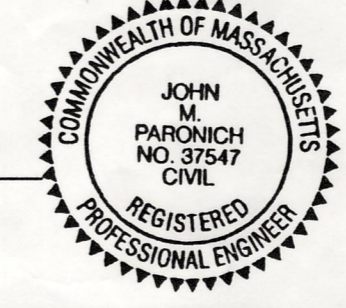
John M. Paronich CHAIRMAN



"I HEREBY CERTIFY THAT THIS PLAN
WAS PREPARED IN CONFORMITY WITH THE
RULES AND REGULATIONS OF THE REGISTERS
OF DEEDS."



John M. Paronich DATE: 7/2/97
REG. PROFESSIONAL LAND SURVEYOR



448/417 of 97