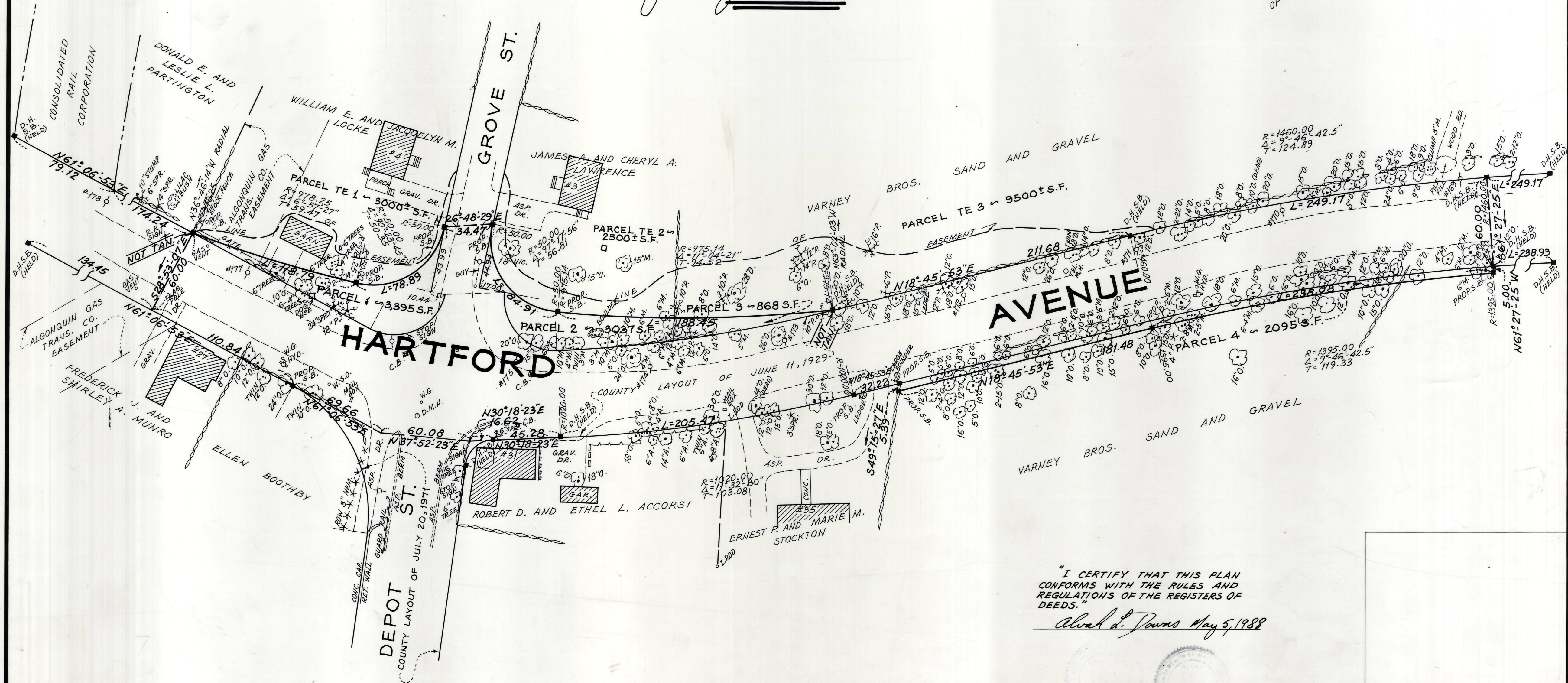
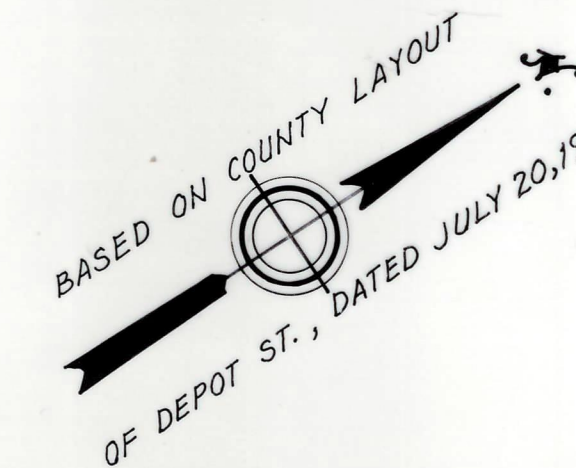


Plan showing the Relocation and Widening of HARTFORD AVENUE, BELLINGHAM

between
A POINT ABOUT 200 FEET WESTERLY OF DEPOT STREET AND
A POINT ABOUT 750 FEET EASTERLY OF DEPOT STREET
as made by the Norfolk County Commissioners
by Return dated May 4, 1988
Scale: 1 inch = 40 feet

Alvah L. Downs, County Engineer

James J. Collins CHAIRMAN



"I CERTIFY THAT THIS PLAN
CONFORMS WITH THE RULES AND
REGULATIONS OF THE REGISTER OF
DEEDS."
Alvah L. Downs May 5, 1988