

Plan showing the Relocation and Widening of VILLAGE STREET, MEDWAY

between
A POINT ABOUT 300 FEET EASTERLY OF NORFOLK AVENUE AND CHICKEN BROOK
as made by the Norfolk County Commissioners
by Return dated May 1, 1985
Scale: 1 inch = 20 feet

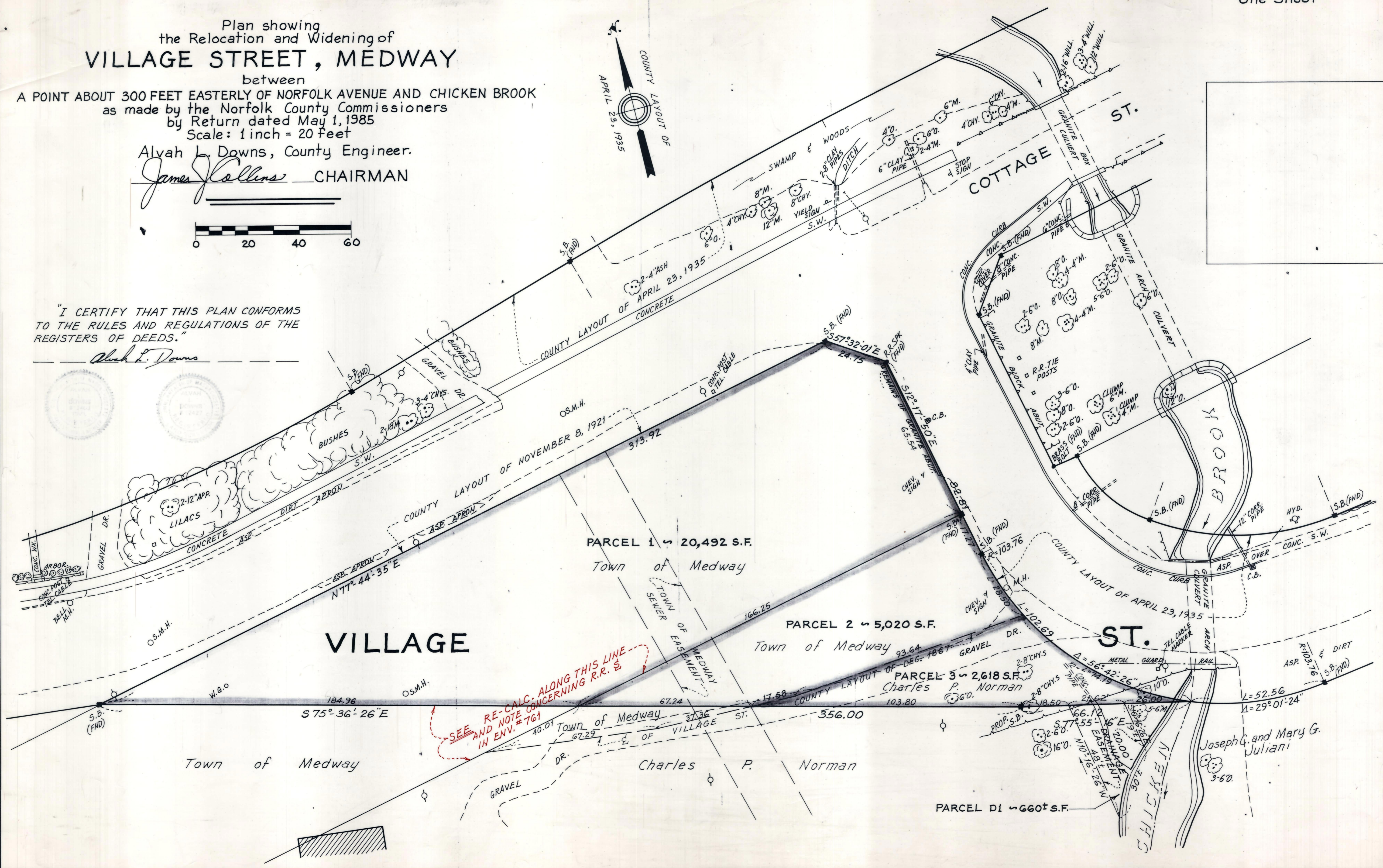
Alyah L. Downs, County Engineer.

James Collins CHAIRMAN



"I CERTIFY THAT THIS PLAN CONFORMS
TO THE RULES AND REGULATIONS OF THE
REGISTERS OF DEEDS."

Alyah L. Downs



SEE RE-CALC. ALONG THIS LINE
AND NOTE CONCERNING R.R. E
IN ENV. #761