

"I CERTIFY THAT THIS PLAN CONFORMS  
WITH THE RULES AND REGULATIONS OF  
THE REGISTERS OF DEEDS."

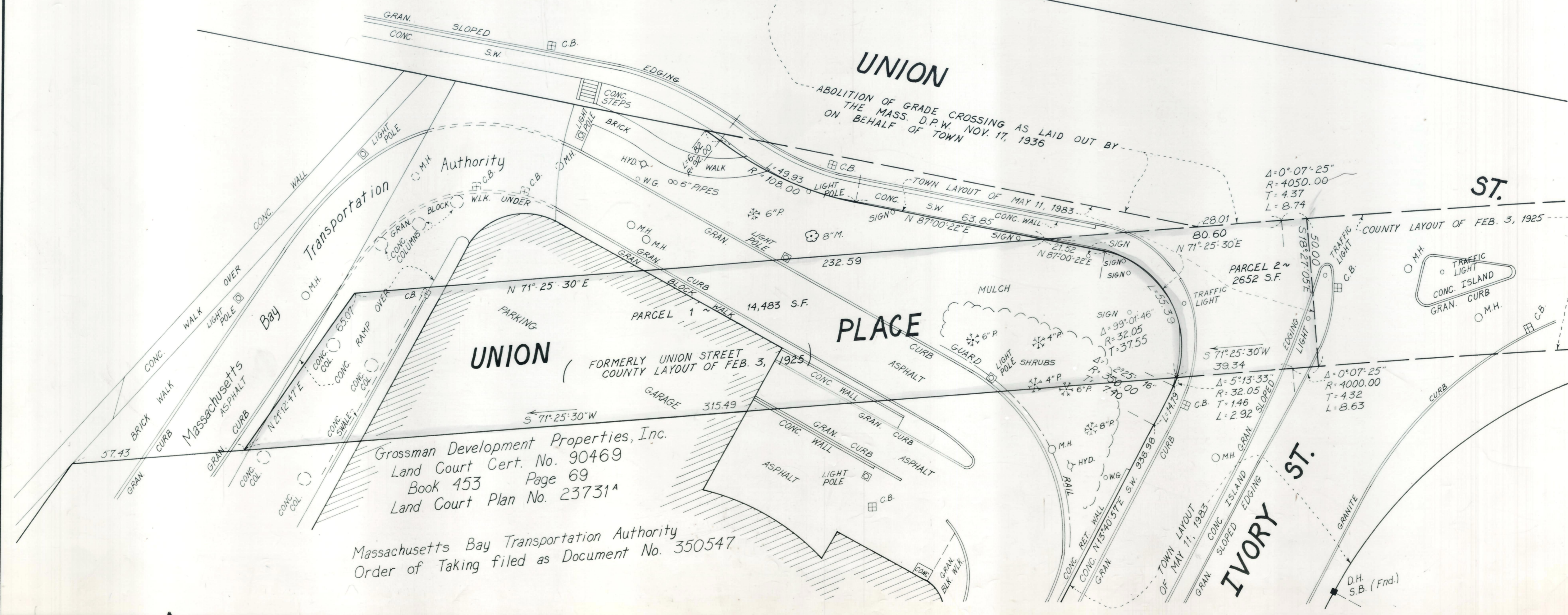
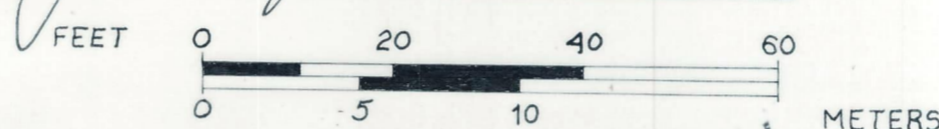
*Alvah L. Downs*



# Plan showing the Discontinuance of a portion of UNION PLACE, BRAINTREE

(formerly Union Street)  
AT LAND OF MASSACHUSETTS BAY TRANSPORTATION AUTHORITY  
as made by the Norfolk County Commissioners  
by Return dated March 20, 1985  
Scale: 1 inch = 20 feet  
Alvah L. Downs, County Engineer

*James Collins* CHAIRMAN



Grossman Development Properties, Inc.  
Land Court Cert. No. 90469  
Book 453 Page 69  
Land Court Plan No. 23731A

Massachusetts Bay Transportation Authority  
Order of Taking filed as Document No. 350547