

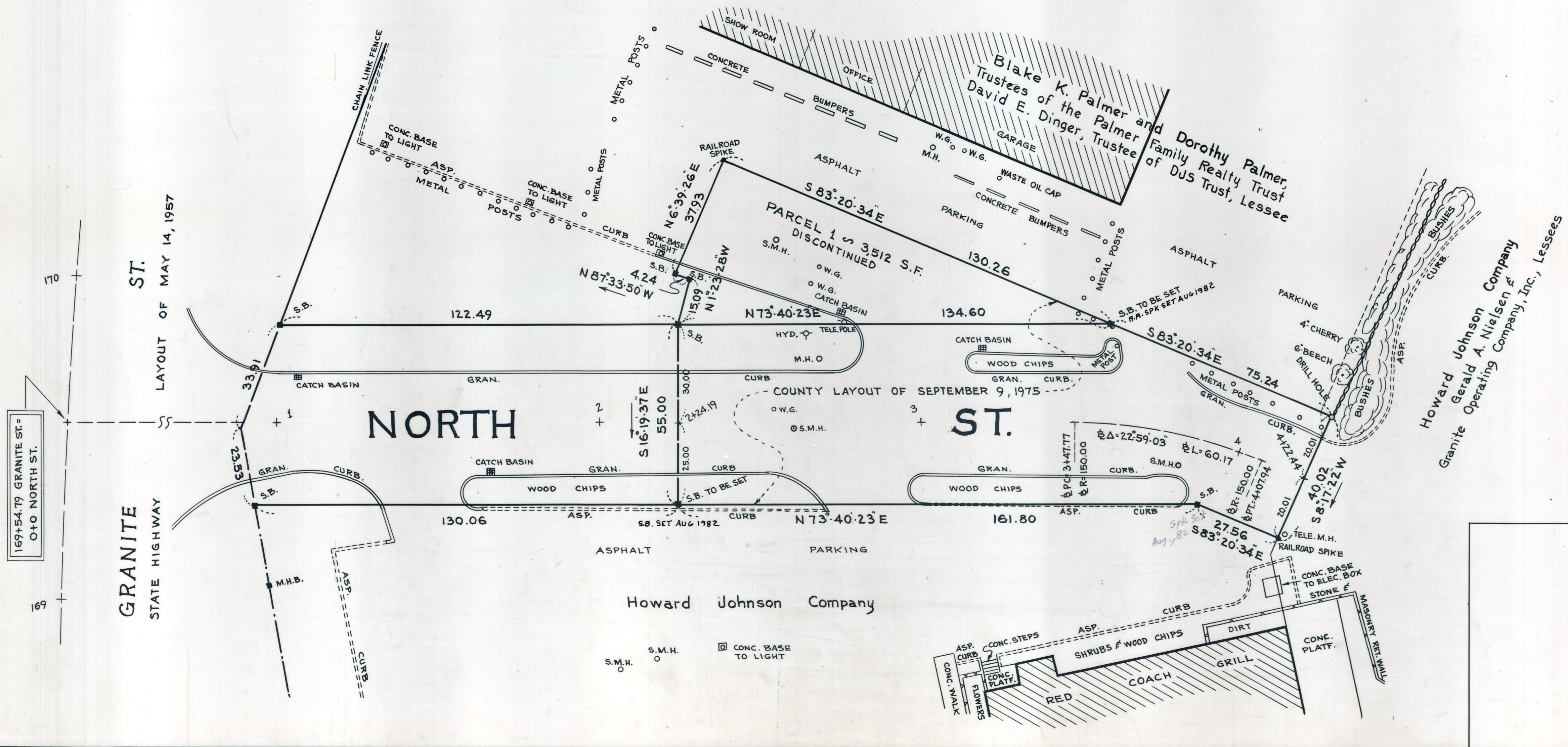
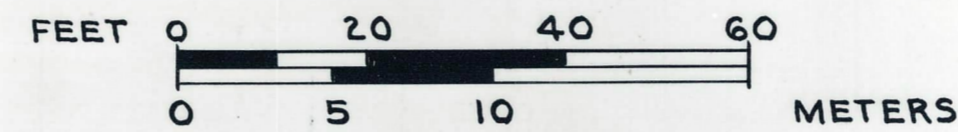
Plan showing the Relocation
of
NORTH STREET, BRAINTREE

between
STATION 2+24.19 AND STATION 4+22.44
as made by the Norfolk County Commissioners
by Return dated June 30, 1982
Scale: 1 inch = 20 feet
Alvah L. Downs, County Engineer

I CERTIFY THAT THIS PLAN
CONFORMS WITH THE RULES AND REGULATIONS
OF THE REGISTERS OF DEEDS.

Alvah L. Downs

James Collins CHAIRMAN



COMPLETE