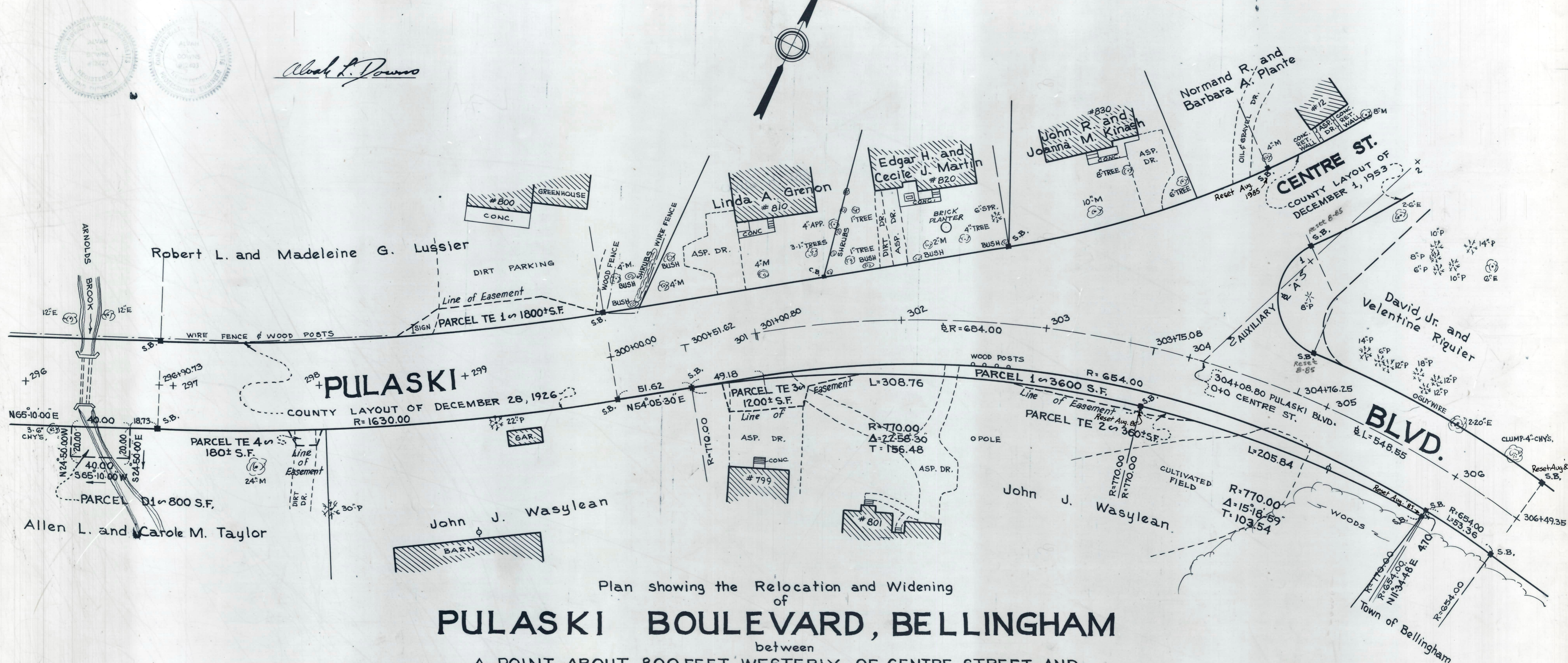


I CERTIFY THAT THIS PLAN
CONFORMS WITH THE RULES AND REGULATIONS
OF THE REGISTERS OF DEEDS.

Alvah L. Downs



Plan showing the Relocation and Widening
of
PULASKI BOULEVARD, BELLINGHAM
between

A POINT ABOUT 800 FEET WESTERLY OF CENTRE STREET AND
A POINT ABOUT 200 FEET EASTERLY OF CENTRE STREET

as made by the Norfolk County Commissioners
by Return dated February 10, 1982

Scale: 1 inch = 40 feet
Alvah L. Downs, County Engineer

James J. Collins CHAIRMAN

