

Plan showing the Discontinuance of a portion of **LOVERING STREET, MEDWAY**

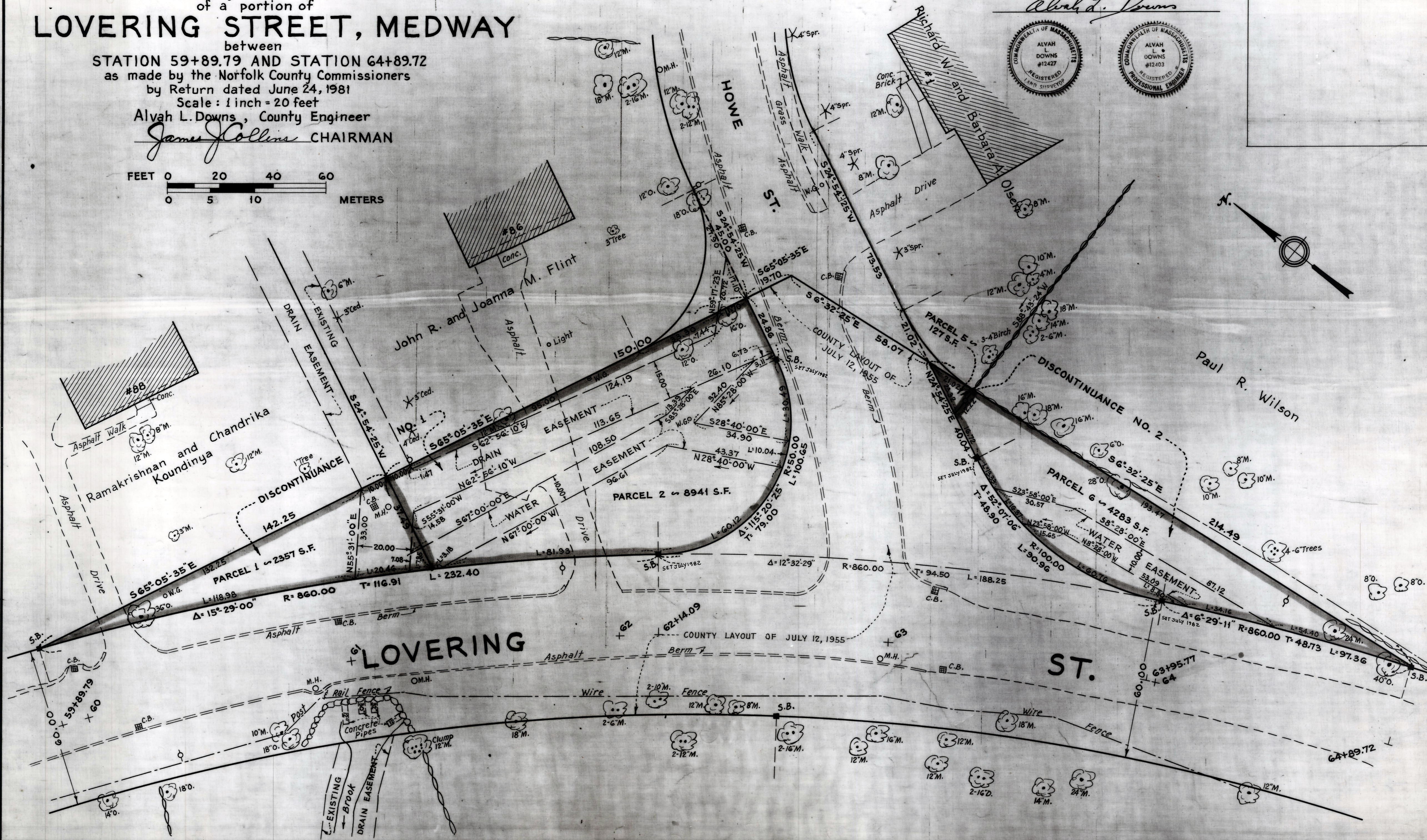
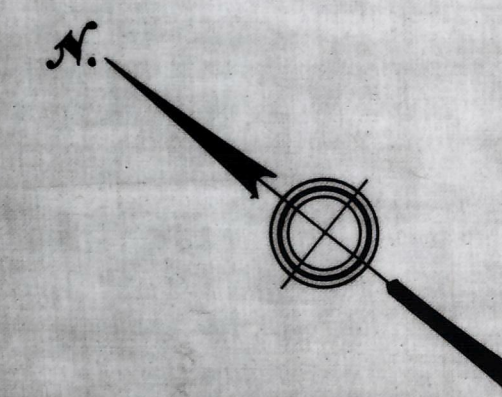
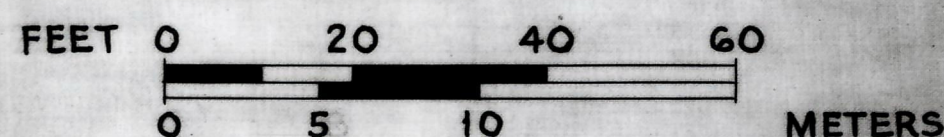
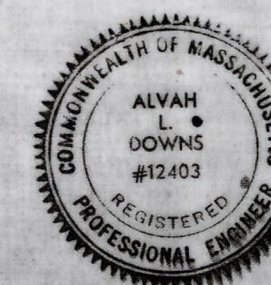
between
STATION 59+89.79 AND STATION 64+89.72
as made by the Norfolk County Commissioners
by Return dated June 24, 1981
Scale: 1 inch = 20 feet

Alvah L. Downs, County Engineer

James Hollins CHAIRMAN

I CERTIFY THAT THIS PLAN CONFORMS
WITH THE RULES AND REGULATIONS
OF THE REGISTERS OF DEEDS.

Alvah L. Downs



COMPLETE