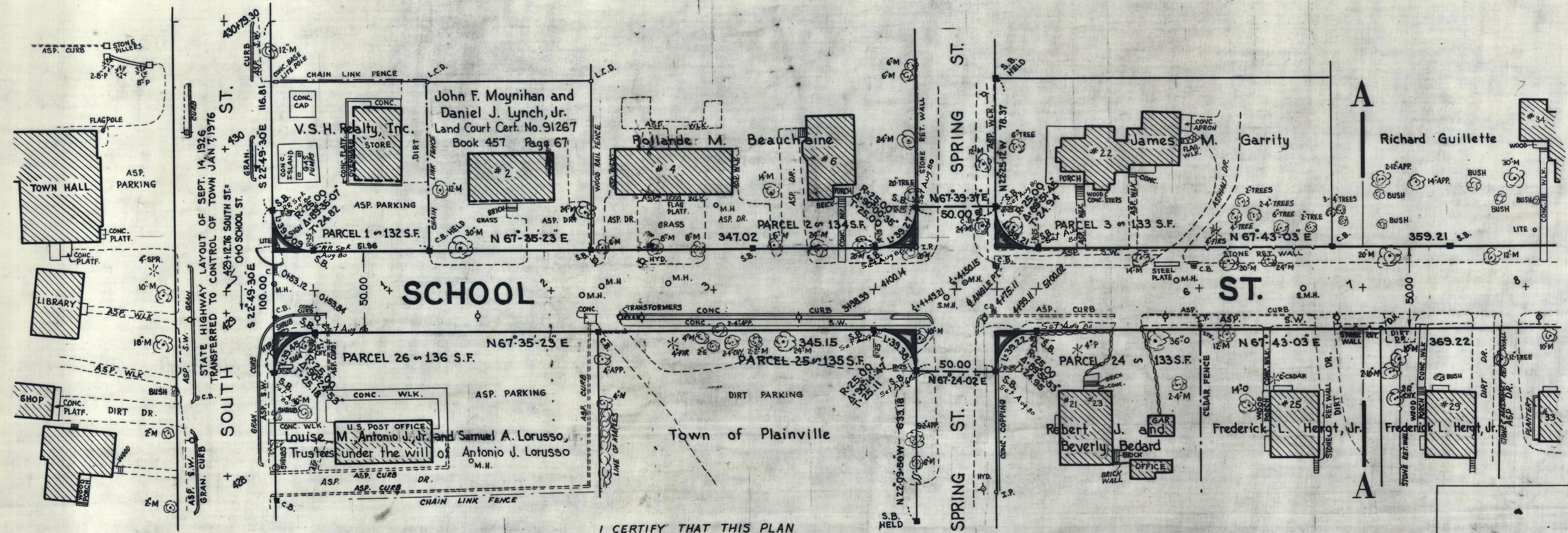
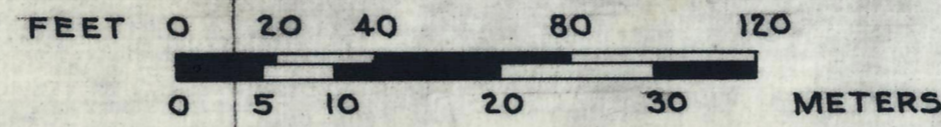


Plan showing the Relocation and Widening of SCHOOL STREET, PLAINVILLE

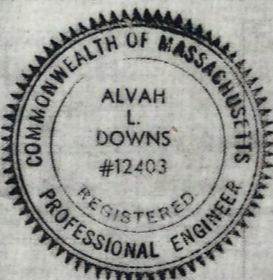
SOUTH STREET AND GEORGE STREET

as made by the Norfolk County Commissioners
by Return dated June 25, 1980
Scale: 1 inch = 40 feet
Alvah L. Downs, County Engineer

James Collins CHAIRMAN



I CERTIFY THAT THIS PLAN
CONFORMS WITH THE RULES AND REGULATIONS
OF THE REGISTERS OF DEEDS.



Alvah L. Downs