

Plan showing the Relocation of **COMMON STREET, BRAINTREE**

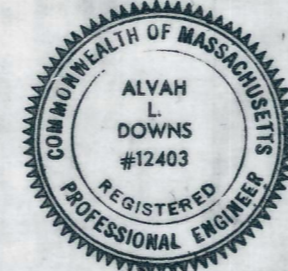
between
STATION 26+30.17 AND STATION 28+83.52

as made by the Norfolk County Commissioners
by Return dated April 11, 1979

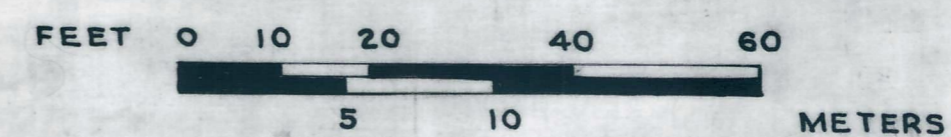
Scale: 1 inch = 20 feet
Alvah L. Downs, County Engineer

James Collins CHAIRMAN

I CERTIFY THAT THIS PLAN
CONFORMS WITH THE RULES AND REGULATIONS
OF THE REGISTERS OF DEEDS.



Alvah L. Downs

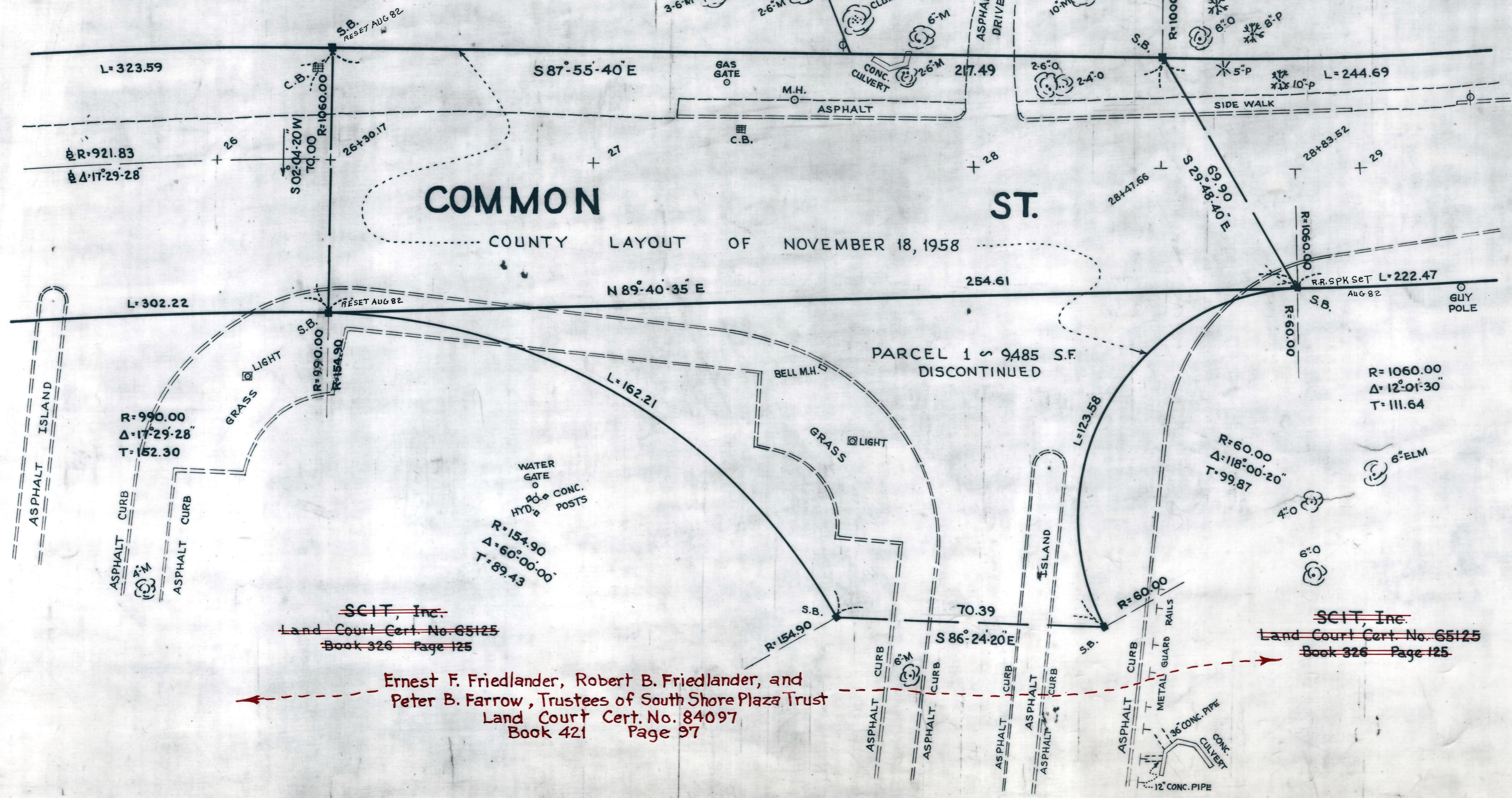


YANKEE DIVISION HIGHWAY
STATE HIGHWAY LAYOUT OF FEB. 14, 1956
CHAIN LINK FENCE

SCIT, Inc.
Land Court Cert. No. 65125
Book 326 Page 125

R=1060.00
Δ=17°29'28"
T=163.07

R=1000.00
Δ=14°01'10"
T=122.96



R=990.00
Δ=17°29'28"
T=152.30

R=154.90
Δ=60°00'00"
T=89.43

R=60.00
Δ=118°00'20"
T=99.87

R=1060.00
Δ=12°01'30"
T=111.64

~~SCIT, Inc.~~
~~Land Court Cert. No. 65125~~
~~Book 326 Page 125~~

Ernest F. Friedlander, Robert B. Friedlander, and
Peter B. Farrow, Trustees of South Shore Plaza Trust
Land Court Cert. No. 84097
Book 421 Page 97

~~SCIT, Inc.~~
~~Land Court Cert. No. 65125~~
~~Book 326 Page 125~~

