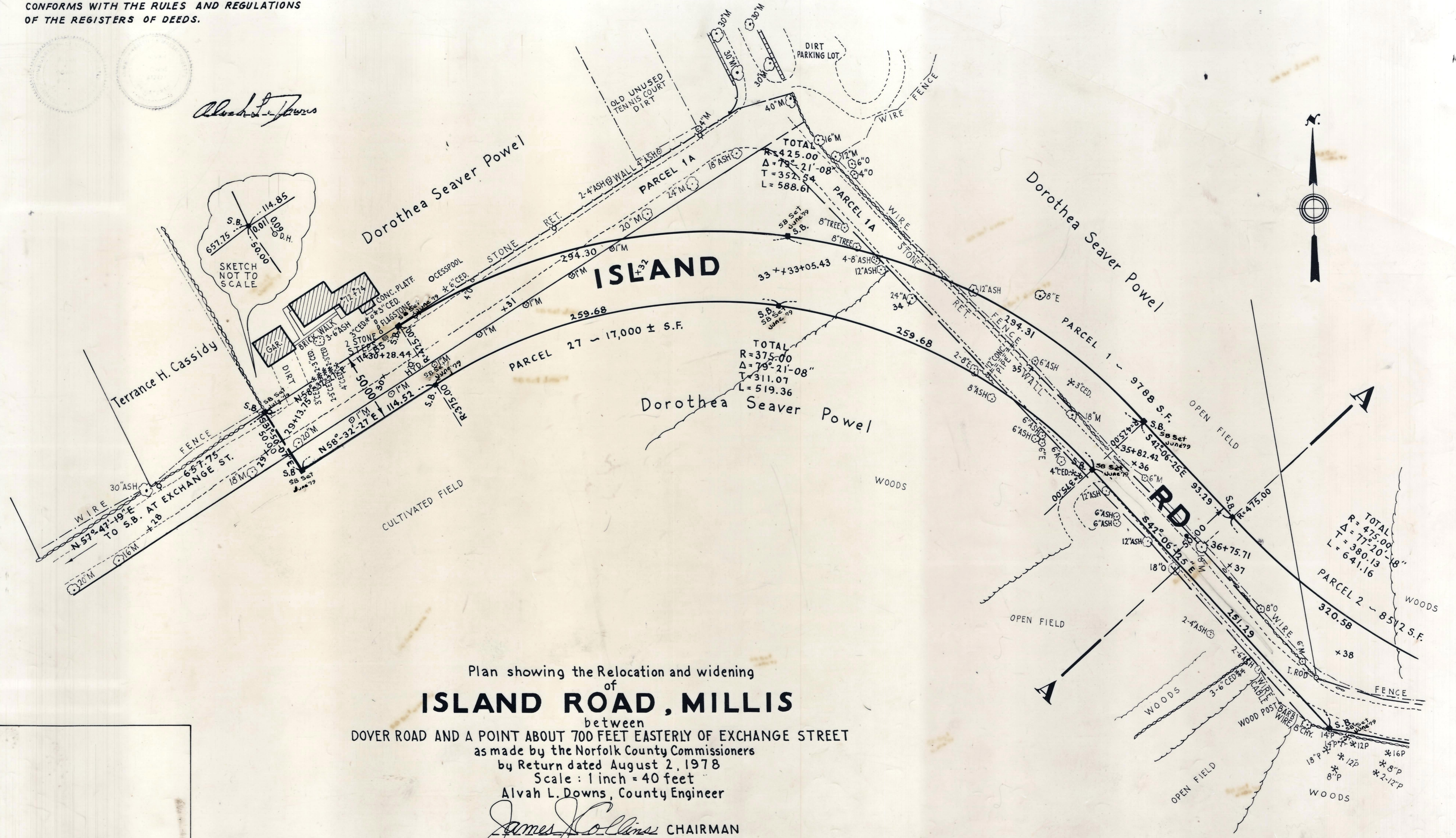


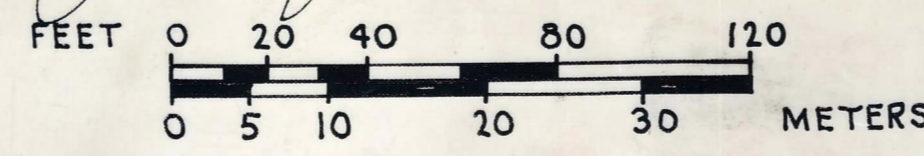
I CERTIFY THAT THIS PLAN  
CONFORMS WITH THE RULES AND REGULATIONS  
OF THE REGISTERS OF DEEDS.

*Alvah L. Downs*



Plan showing the Relocation and widening  
of  
**ISLAND ROAD, MILLIS**  
between  
DOVER ROAD AND A POINT ABOUT 700 FEET EASTERLY OF EXCHANGE STREET  
as made by the Norfolk County Commissioners  
by Return dated August 2, 1978  
Scale : 1 inch = 40 feet  
Alvah L. Downs, County Engineer

*James Collins* CHAIRMAN



OFFICE COPY  
RECORDED IN REGISTRY 5497-390  
AUGUST 4, 1978  
PLAN BOOK 269 • PL. NO. 654 OF 1978