

Plan and Profile
showing the Relocation
of

COMMON STREET, BRAINTREE

between
GRANITE STREET AND A POINT ABOUT 1300 FEET
EASTERLY OF GRANITE STREET
as made by the Norfolk County Commissioners
by Return dated March 23, 1977
Horizontal Scale: 1 inch = 40 feet
Vertical Scale: 1 inch = 8 feet
Alvah L. Downs, County Engineer

Thomas K. Marmo (Acting) CHAIRMAN

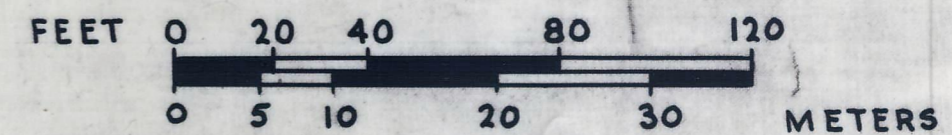
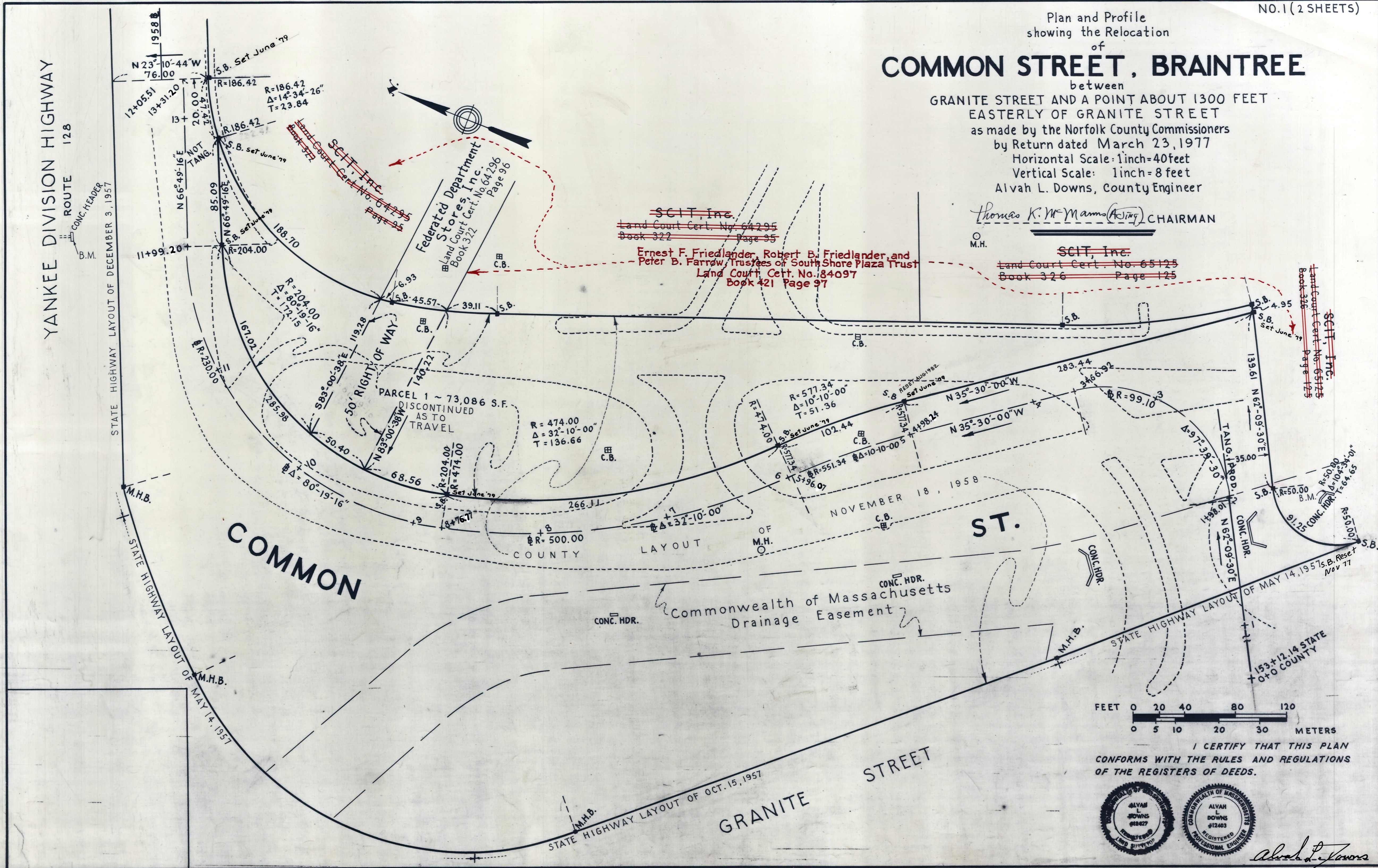
M.H.

~~SCIT, Inc.~~
Land Court Cert. No. 65125
Book 326 Page 125

~~SCIT, Inc.~~
Land Court Cert. No. 64295
Book 322 Page 35

Ernest F. Friedlander, Robert B. Friedlander, and
Peter B. Farrow, Trustees of South Shore Plaza Trust
Land Court Cert. No. 184097
Book 421 Page 97

~~SCIT, Inc.~~
Land Court Cert. No. 65125
Book 326 Page 125



I CERTIFY THAT THIS PLAN
CONFORMS WITH THE RULES AND REGULATIONS
OF THE REGISTERS OF DEEDS.



Alvah L. Downs

613-1
Recorded Apr. 4, 1977
P/BK. 259 Plan # 186 of 1977 FEE
with Relocation & deed BK. 5319-676 thru 682