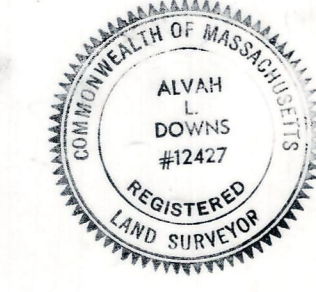


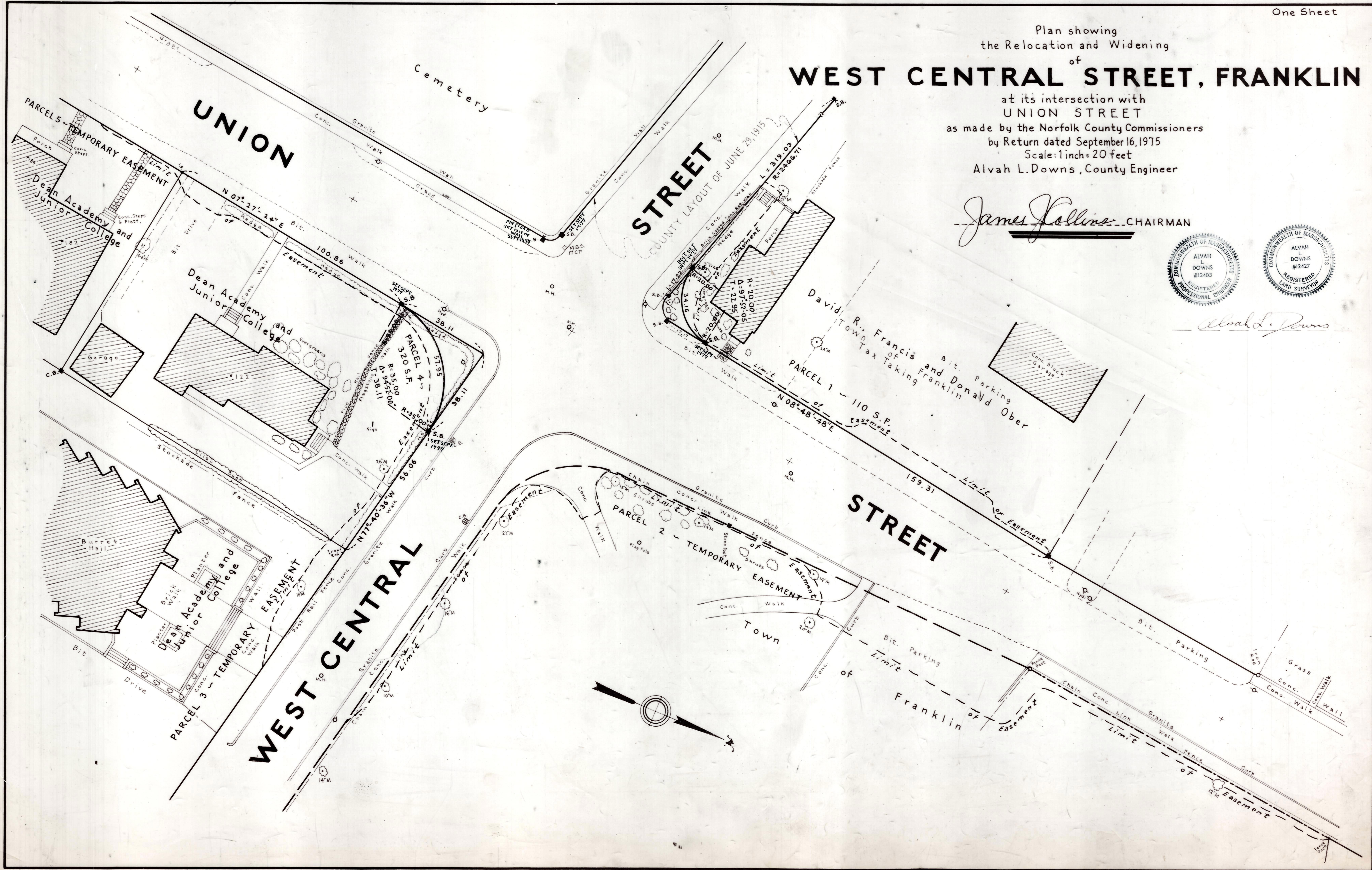
Plan showing the Relocation and Widening of **WEST CENTRAL STREET, FRANKLIN**

at its intersection with
UNION STREET
as made by the Norfolk County Commissioners
by Return dated September 16, 1975
Scale: 1 inch = 20 feet
Alvah L. Downs, County Engineer

James Collins CHAIRMAN



Alvah L. Downs



Received in Registry
5166 - 738
October 3, 1975
Pl. Bk. 251 Pl. 684 Easement