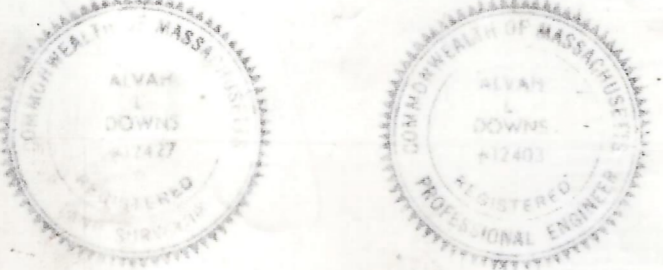
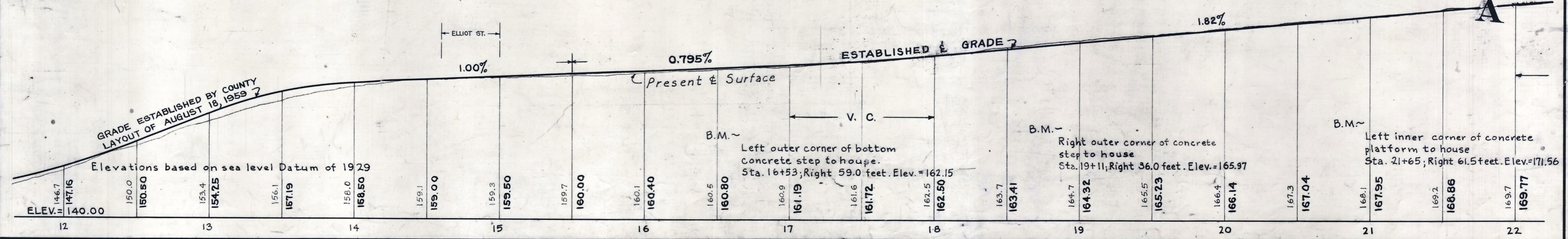
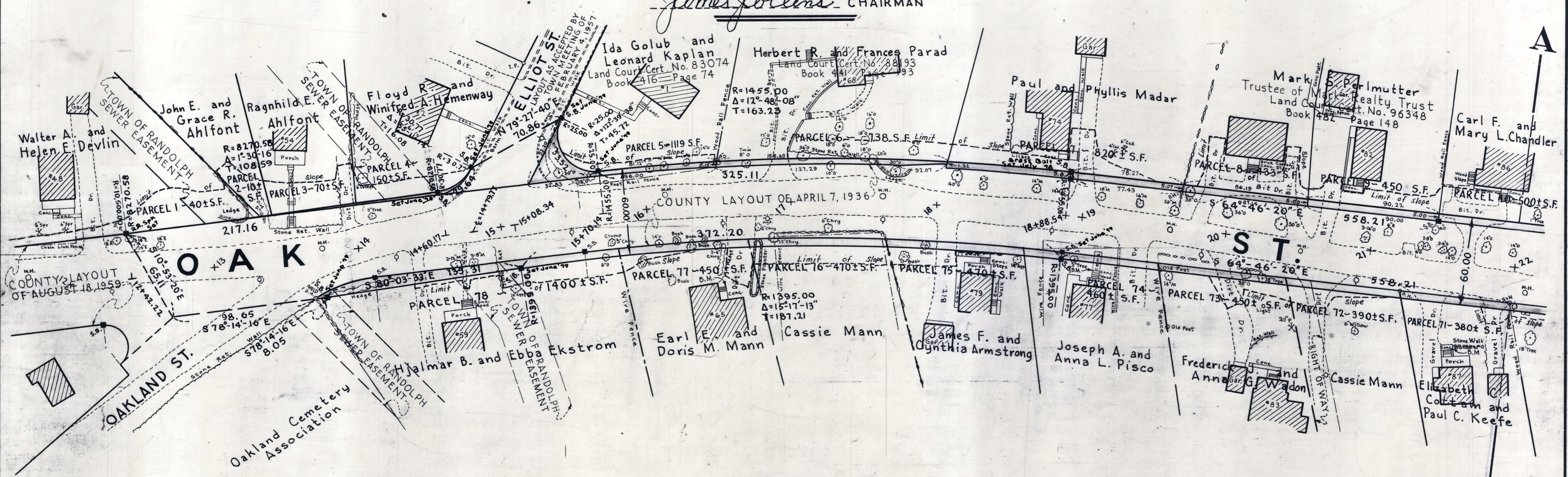


Plan and Profile  
showing the Relocation and Widening  
of  
**OAK STREET, RANDOLPH**  
between  
OAKLAND STREET AND A POINT ABOUT 150 FEET EASTERLY OF PAINE ROAD  
as made by the Norfolk County Commissioners  
by Return dated December 10, 1974  
Horizontal Scale: 1 inch = 40 feet  
Vertical Scale: 1 inch = 8 feet  
Alvah L. Downs, County Engineer



*Alvah L. Downs*

*James Collins* CHAIRMAN



OFFICE COPY

596-1

Received in Registry 5100-19  
Dec. 31, 1974  
Plan Book 247-No. 1110 of 1974 Fee