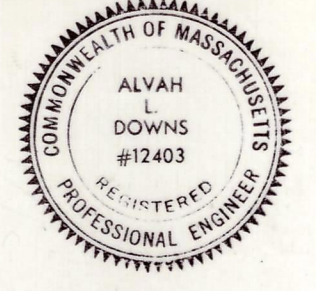
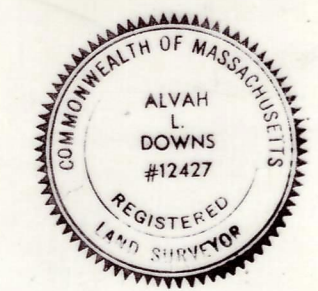
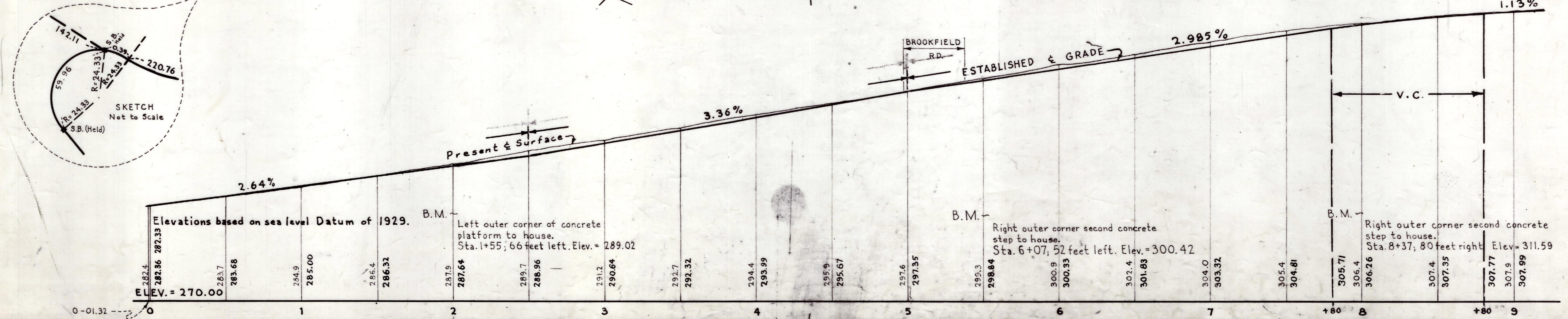
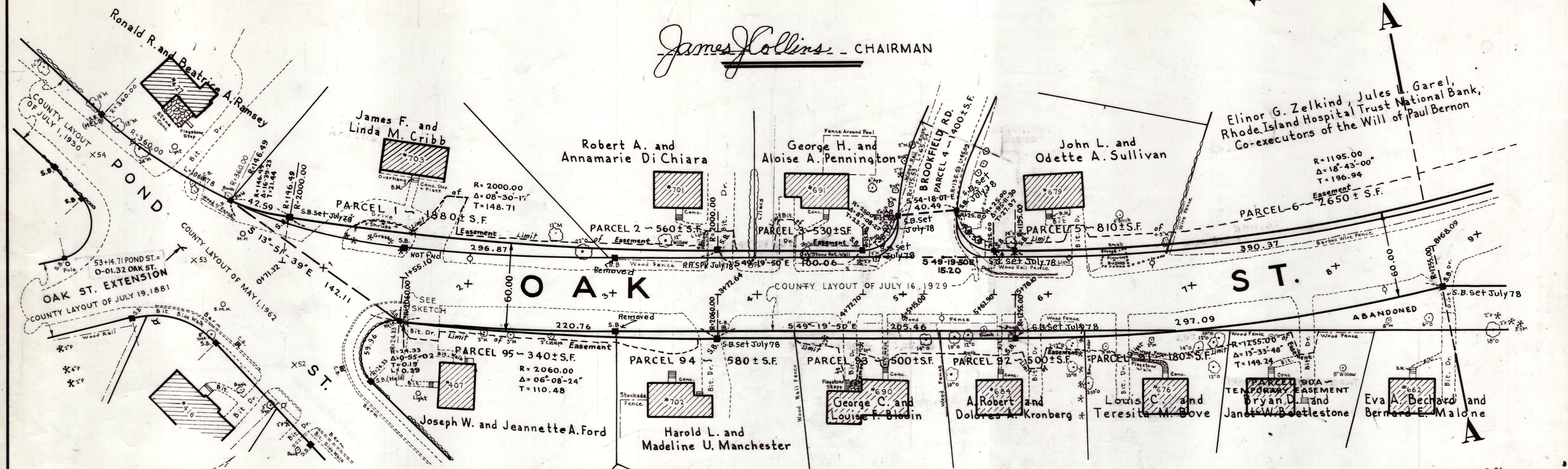
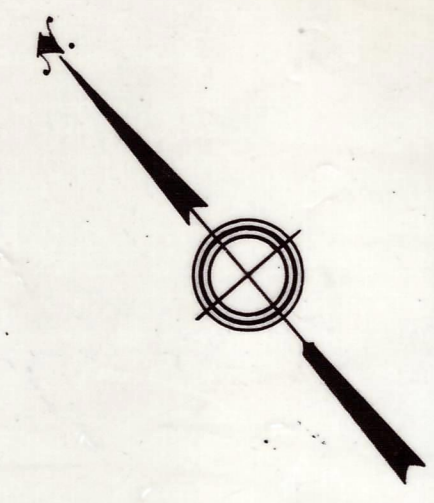


Plan and Profile  
showing the Relocation and Widening  
of  
**OAK STREET, FRANKLIN**  
between  
POND STREET AND PLEASANT STREET  
as made by the Norfolk County Commissioners  
by Return dated June 3, 1975  
Horizontal Scale: 1 inch = 40 feet  
Vertical Scale: 1 inch = 8 feet  
Alvah L. Downs, County Engineer



*Alvah L. Downs*

*James Collins* - CHAIRMAN



OFFICE COPY

Received in Registry 5136-86  
June 18, 1975  
Plan Book 249 No. 385 of 1975

Fee