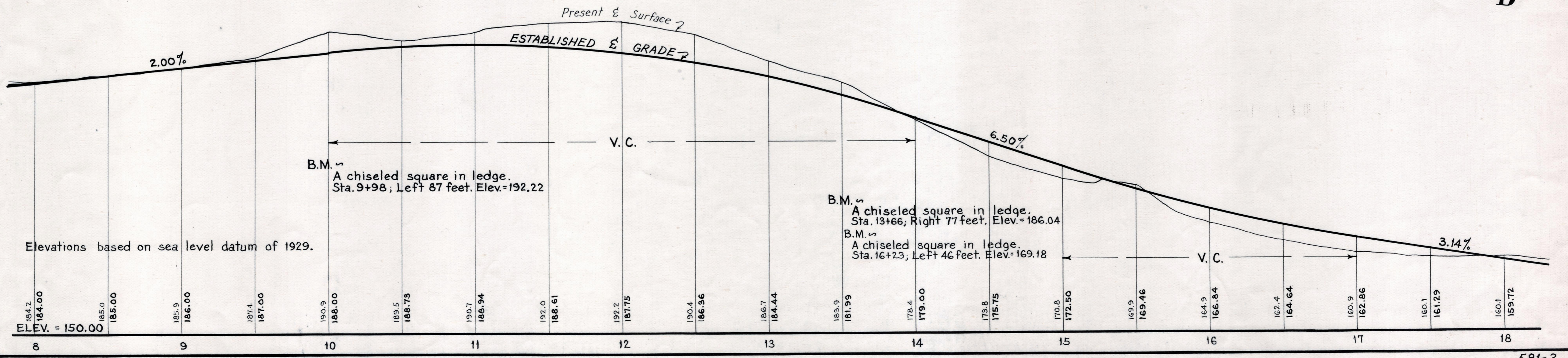
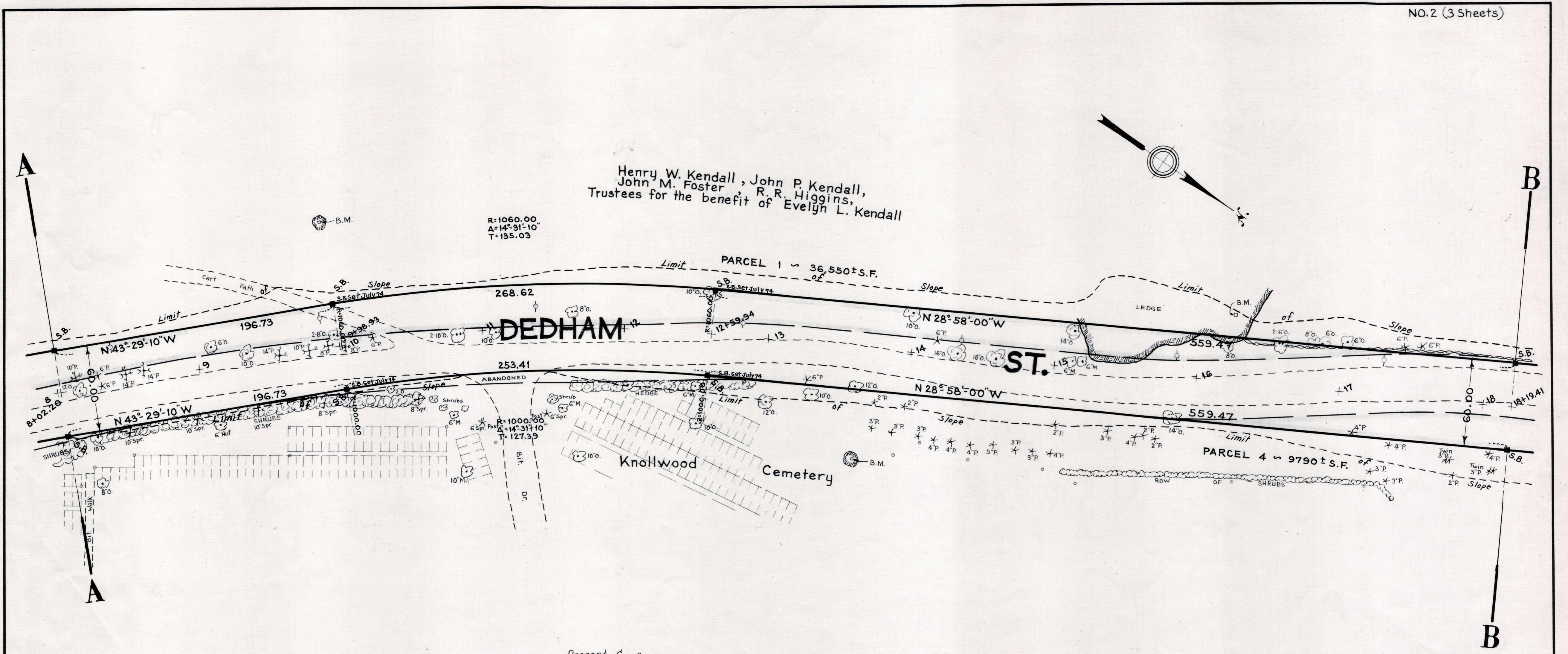


Henry W. Kendall, John P. Kendall,
John M. Foster, R. R. Higgins,
Trustees for the benefit of Evelyn L. Kendall



Elevations based on sea level datum of 1929.

B.M. \swarrow
A chiseled square in ledge.
Sta. 9+98, Left 87 feet. Elev. = 192.22

B.M. \swarrow
A chiseled square in ledge.
Sta. 13+66, Right 77 feet. Elev. = 186.04
B.M. \swarrow
A chiseled square in ledge.
Sta. 16+23, Left 46 feet. Elev. = 169.18