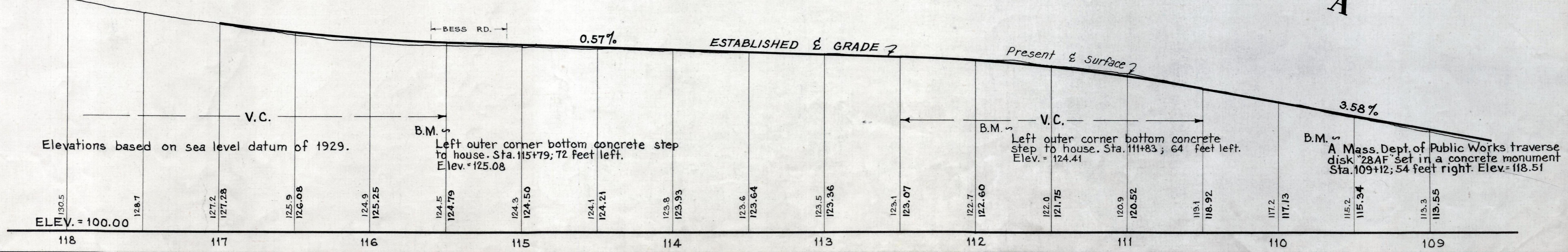
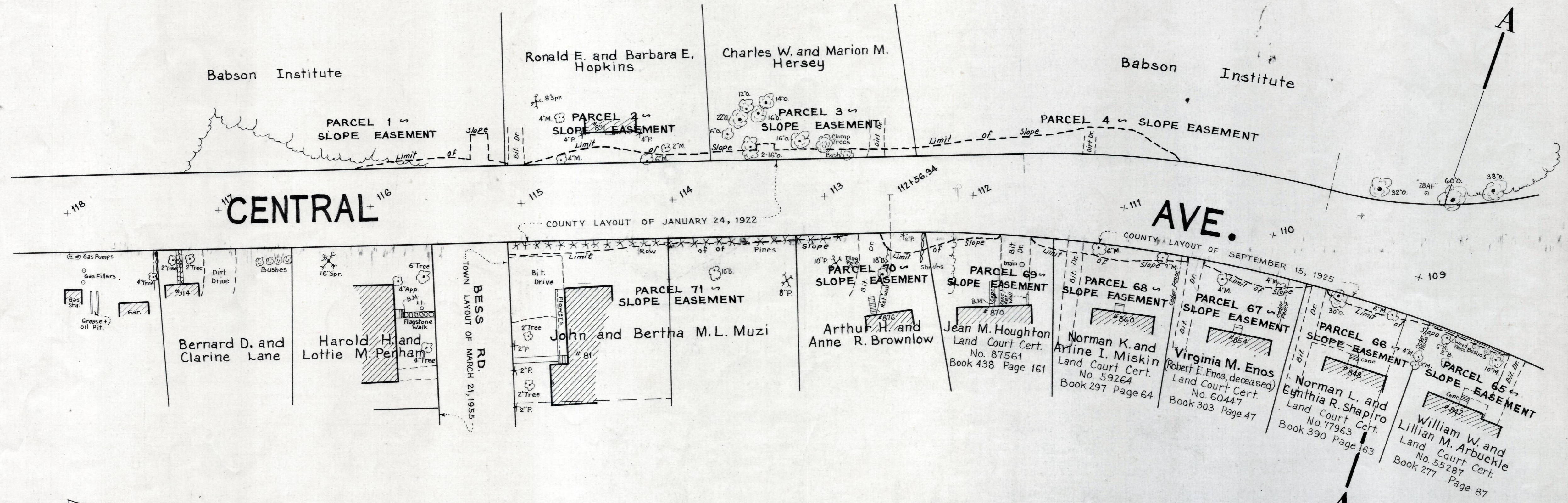
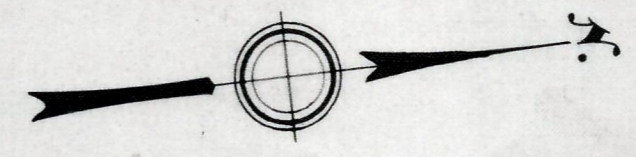


*Alvah L. Downs*

# Plan and Profile showing the Relocation of CENTRAL AVENUE, NEEDHAM

between  
A POINT ABOUT 100 FEET SOUTHERLY OF BESS ROAD AND HUNNEWELL STREET  
as made by the Norfolk County Commissioners  
by Return dated August 8, 1972  
Horizontal Scale : 1 inch = 40 feet  
Vertical Scale : 1 inch = 8 feet  
Alvah L. Downs, County Engineer.  
*James Collins* CHAIRMAN.



Elevations based on sea level datum of 1929.

B.M. Left outer corner bottom concrete step to house. Sta. 115+79; 72 feet left. Elev. = 125.08

B.M. Left outer corner bottom concrete step to house. Sta. 111+83; 64 feet left. Elev. = 124.41

B.M. A Mass. Dept. of Public Works traverse disk 28AF set in a concrete monument Sta. 109+12; 54 feet right. Elev. = 118.51