

Charles C. Cain

Plan and Profile  
showing the Layout  
of a

# NEW HIGHWAY IN FRANKLIN

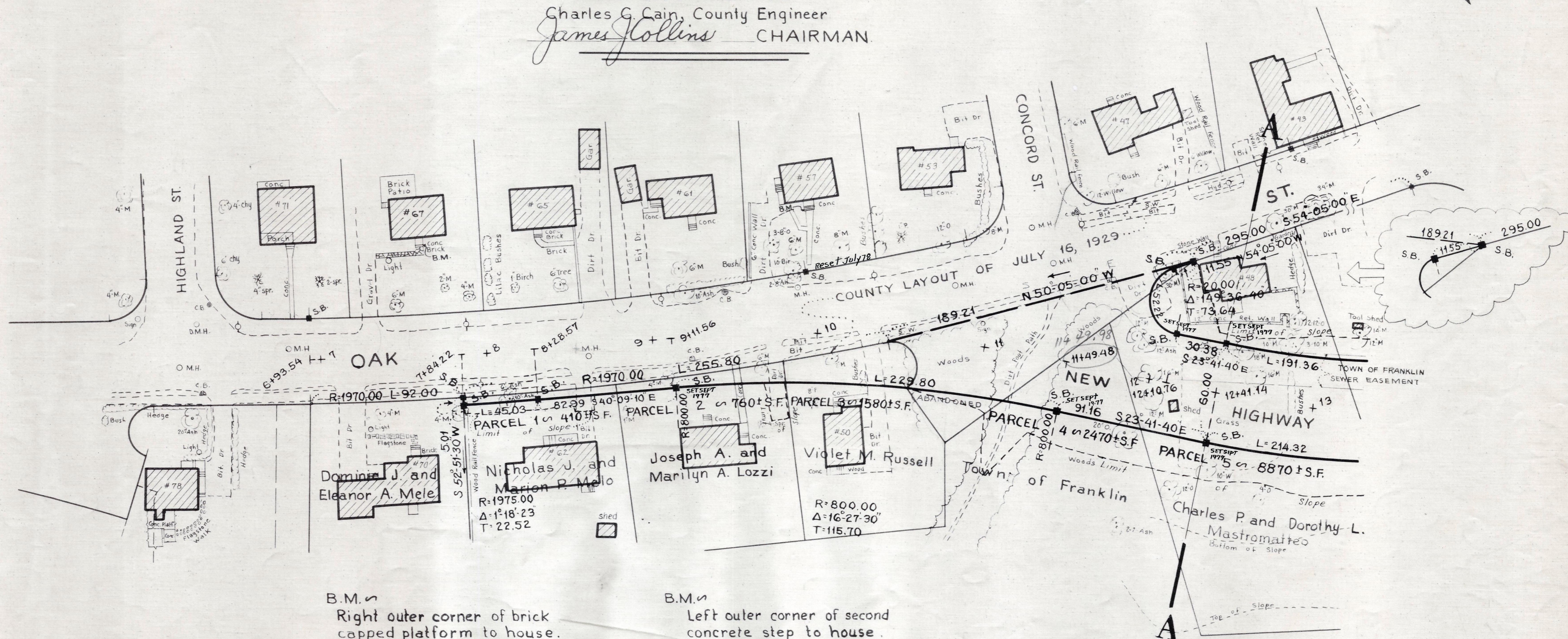
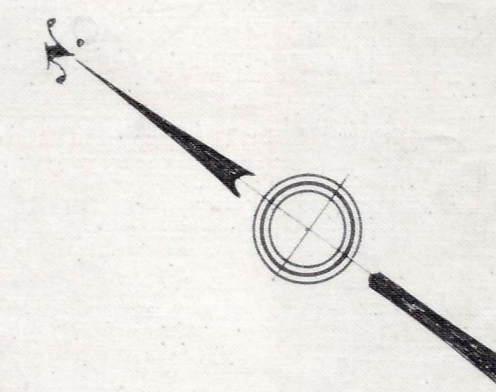
from  
OAK AND CONCORD STREETS TO BEAVER AND UNION STREETS

as made by the Norfolk County Commissioners  
by Return dated August 17, 1971

Horizontal Scale: 1 inch = 40 feet  
Vertical Scale: 1 inch = 8 feet

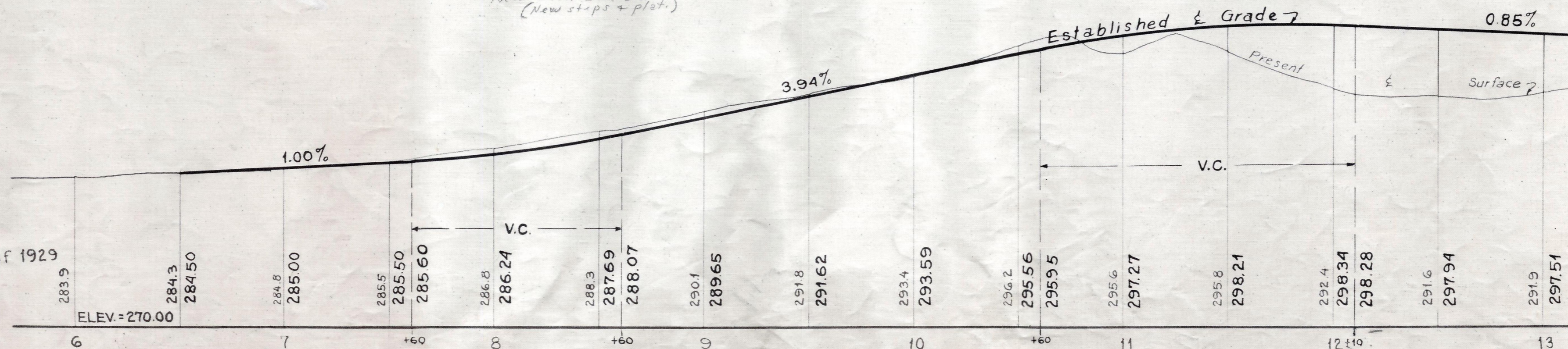
Charles G. Cain, County Engineer

*James Collins* CHAIRMAN



B.M.  $\swarrow$   
 Right outer corner of brick  
 capped platform to house.  
 Sta. 7+67; 67 ft. left. Elev. = 288.55  
*New Elev. = 289.03  
 (New steps + plat.)*

B.M.  $\swarrow$   
 Left outer corner of second  
 concrete step to house.  
 Sta. 9+90; 71 ft. left. Elev. = 294.83



Elevations based on sea level datum of 1929