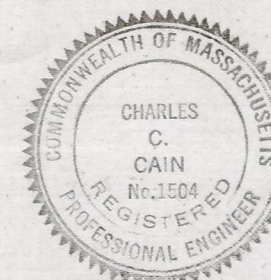


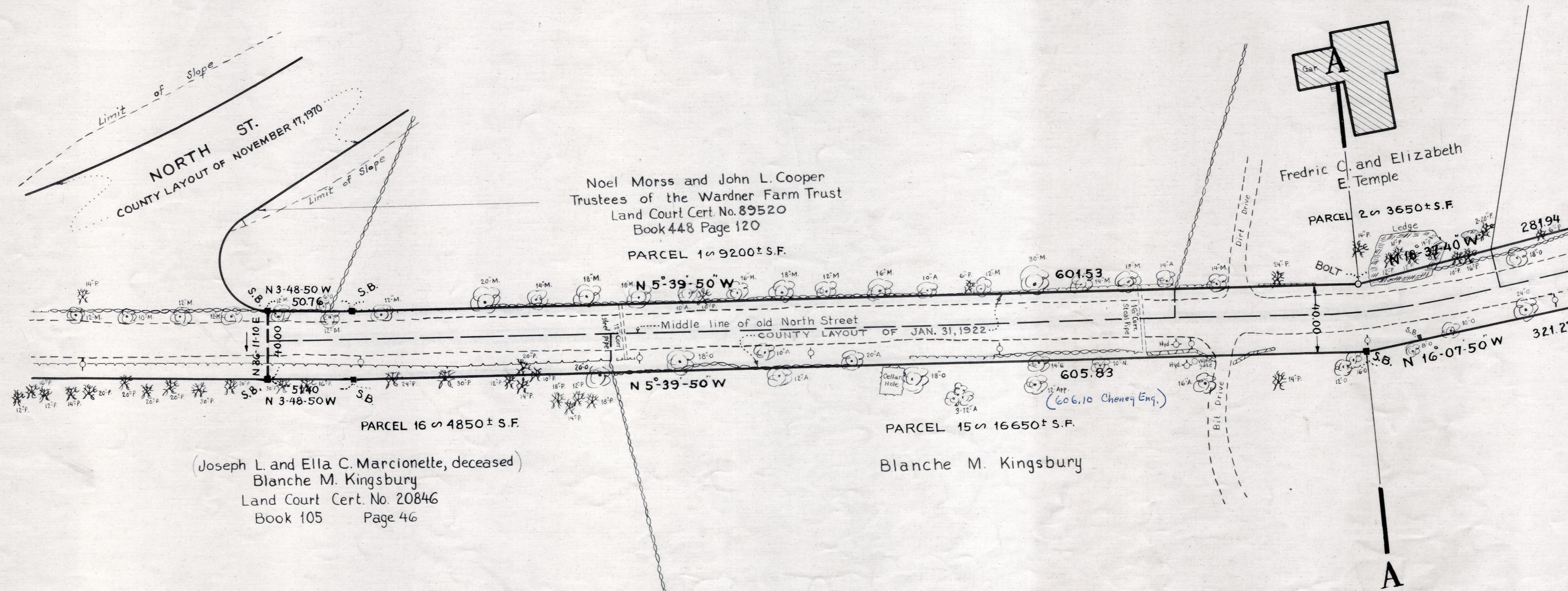
Plan showing the Layout
of a
WAY IN MEDFIELD

between Stations 78 and 108
of the 1970 County Relocation of North Street
as made by the Norfolk County Commissioners
by Return dated September 21, 1971
Scale : 1 inch = 40 feet

Charles C. Cain, County Engineer
James Collins CHAIRMAN.



Charles C. Cain



A