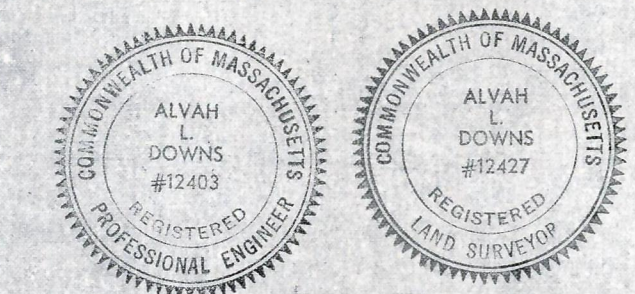


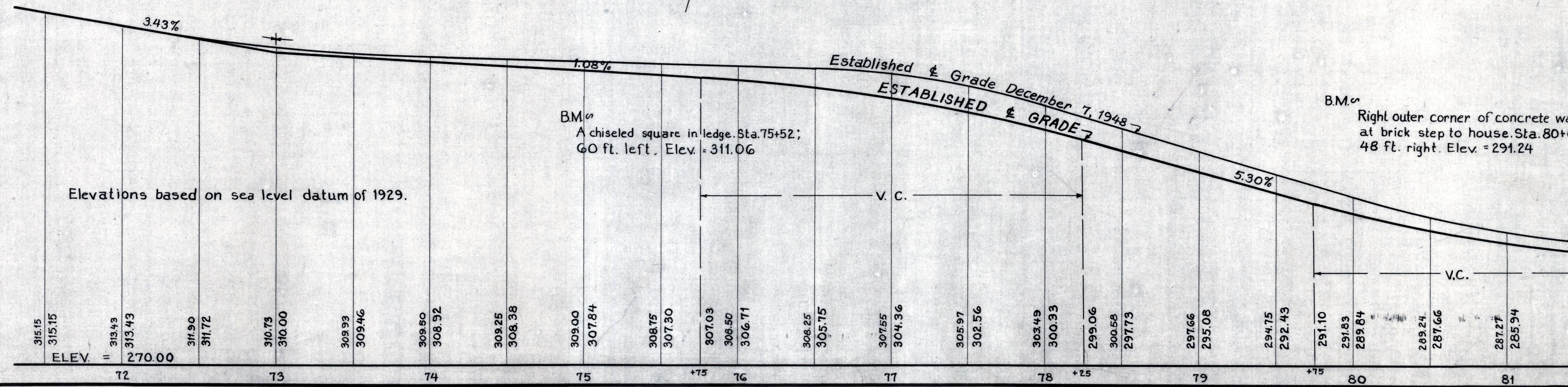
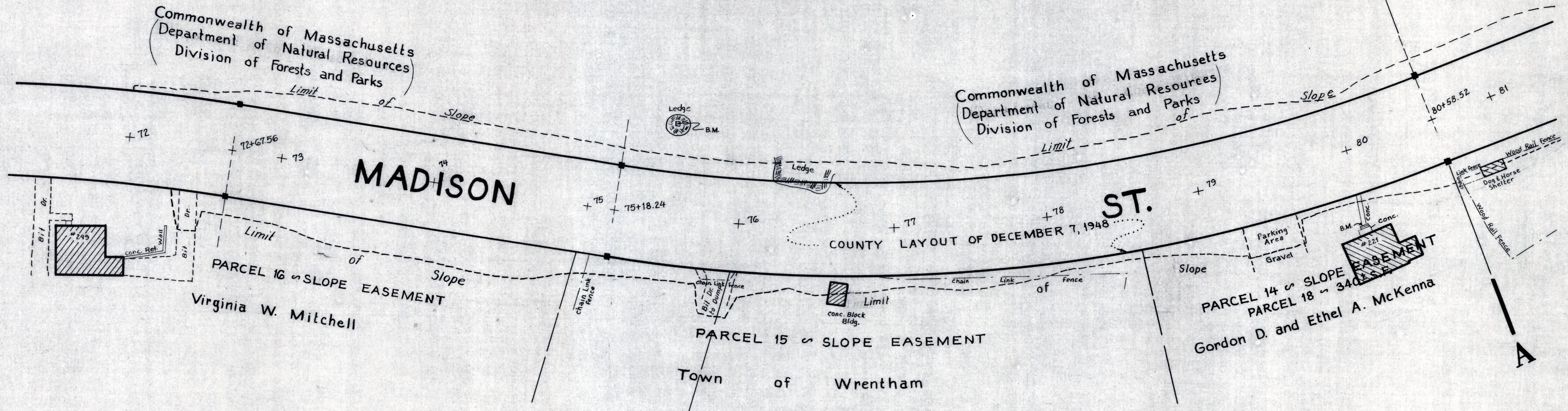
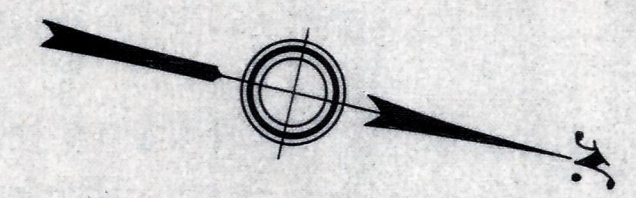
Plan and Profile showing the Relocation of MADISON STREET, WRENTHAM

between
STATION 70 AND EAST STREET
as made by the Norfolk County Commissioners
by Return dated May 23, 1972
Horizontal Scale: 1 inch = 40 feet
Vertical Scale: 1 inch = 8 feet
Alvah L. Downs, County Engineer

James Jollins CHAIRMAN.



Alvah L. Downs



B.M.^o
Right outer corner of concrete walk
at brick step to house. Sta. 80+00;
48 ft. right. Elev. = 291.24