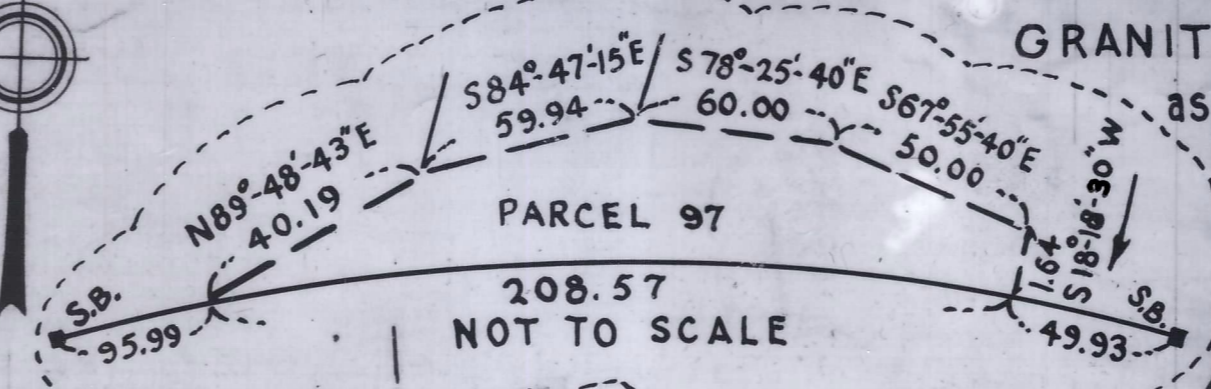


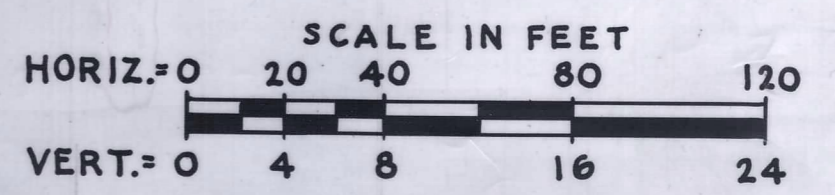
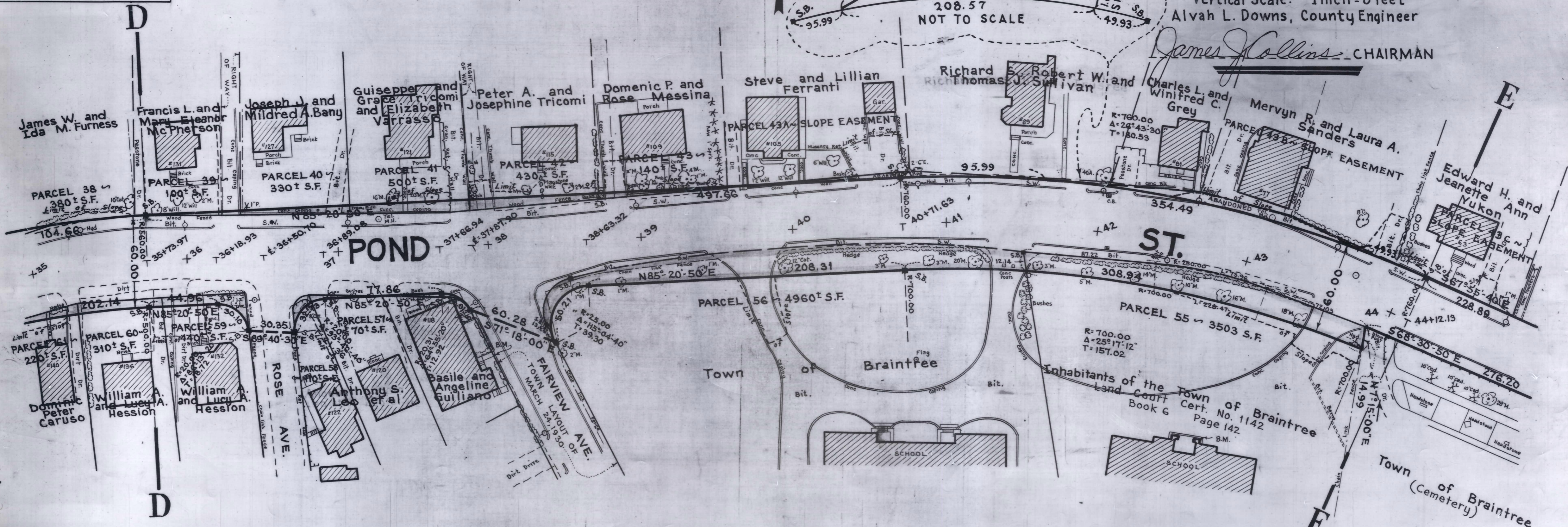
Plan and Profile
 to accompany amendment dated March 2, 1977
 to the Return for the Relocation and Widening
 of
POND STREET, BRAINTREE
 between
 GRANITE STREET AND WASHINGTON STREET
 as made by the Norfolk County Commissioners
 by Return dated May 25, 1971
 Horizontal Scale: 1 inch = 40 feet
 Vertical Scale: 1 inch = 8 feet
 Alvah L. Downs, County Engineer



Alvah L. Downs



James J. Collins - CHAIRMAN



Station	Elevation	Notes
35	114.97	
+25	116.22	
	118.5	
	117.99	
36	119.4	
	119.36	
	120.3	
	120.78	
37	121.1	
	121.69	
	121.94	
	121.8	
	122.13	
38	122.3	
	122.50	
	122.7	
	122.88	
39	123.0	
	123.25	
	123.3	
	123.63	
40	123.2	
	124.00	
	123.0	
	123.74	
41	122.9	
	123.47	
	123.1	
	123.21	
42	123.0	
	122.94	
	123.0	
	122.68	
43	123.1	
	122.41	
	123.3	
	122.15	
44	123.0	
	121.67	
	121.6	
	126.74	

OFFICE COPY