

Charles C. Cain

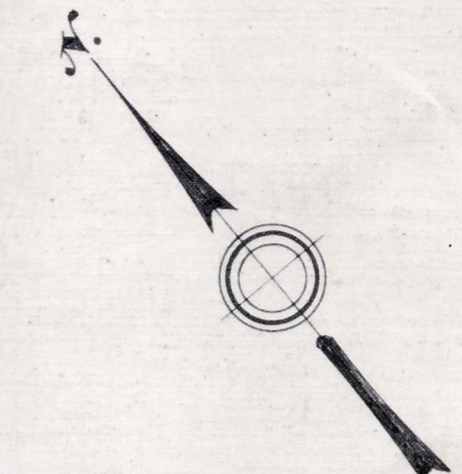
Plan and Profile  
showing the Relocation and Widening  
of

# DEPOT STREET, BELLINGHAM

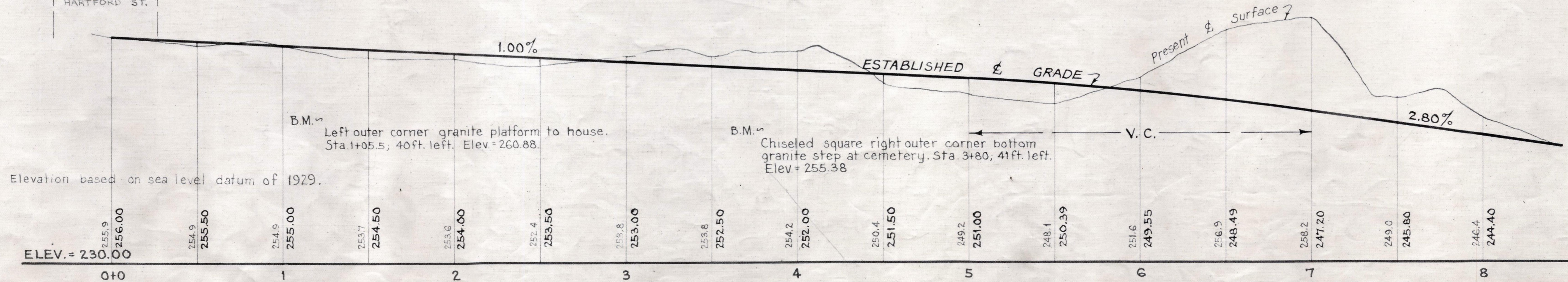
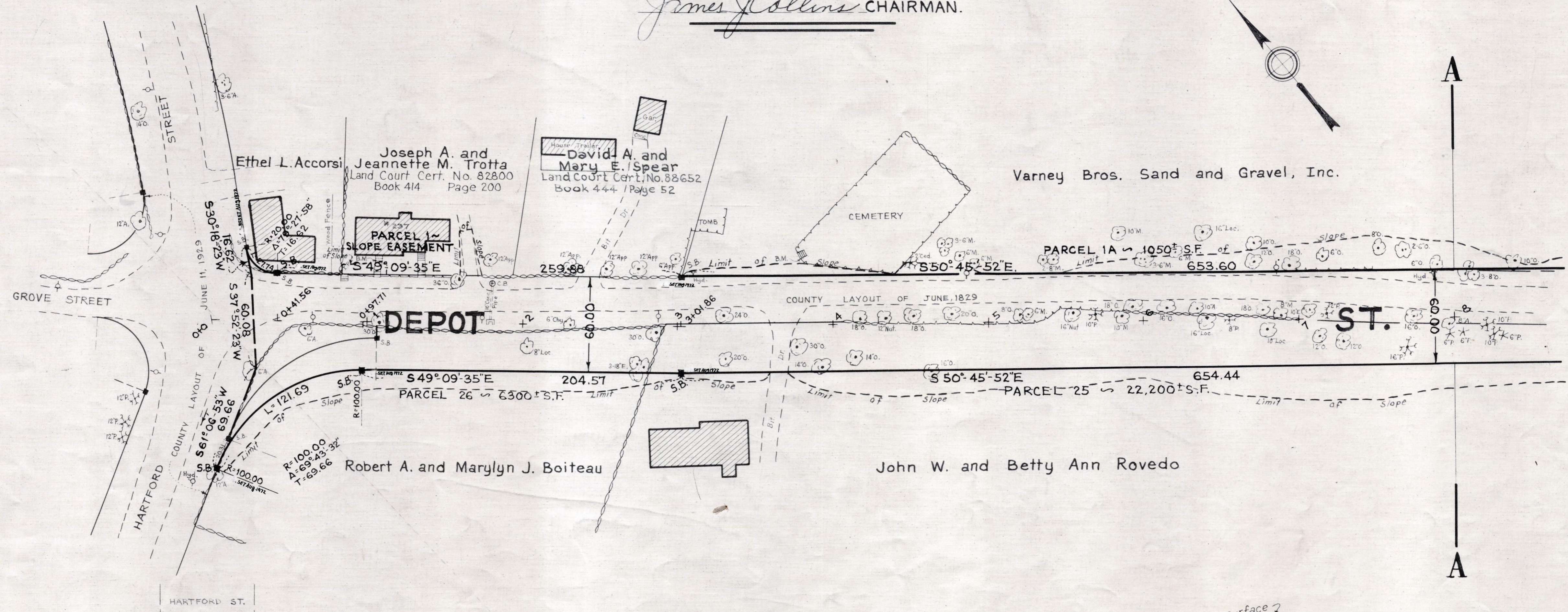
between  
HARTFORD STREET AND A POINT ABOUT 1000 FEET SOUTHEASTERLY OF ROSE AVENUE

as made by the Norfolk County Commissioners  
by Return dated July 20, 1971  
Horizontal Scale: 1 inch = 40 feet.  
Vertical Scale: 1 inch = 8 feet.  
Charles G. Cain, County Engineer

*James Collins* CHAIRMAN.



A  
↑  
A



Elevation based on sea level datum of 1929.