

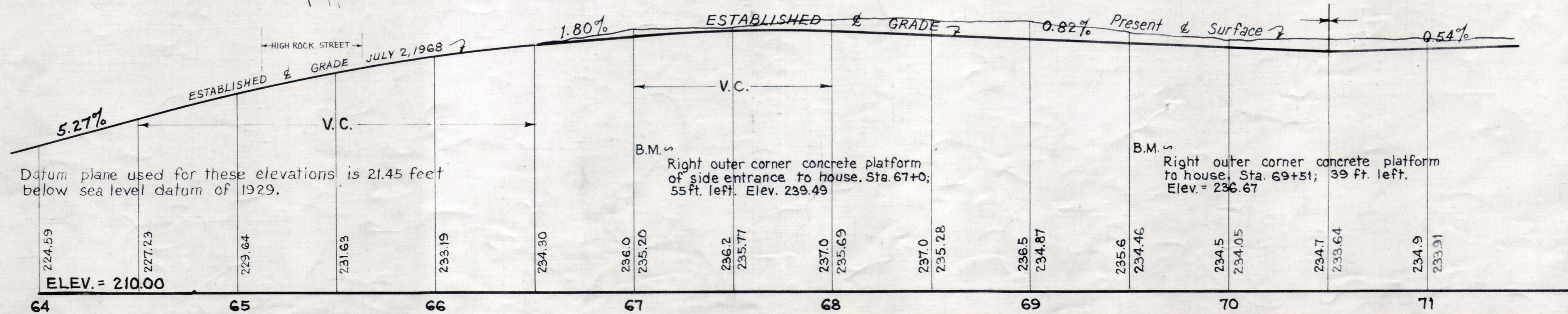
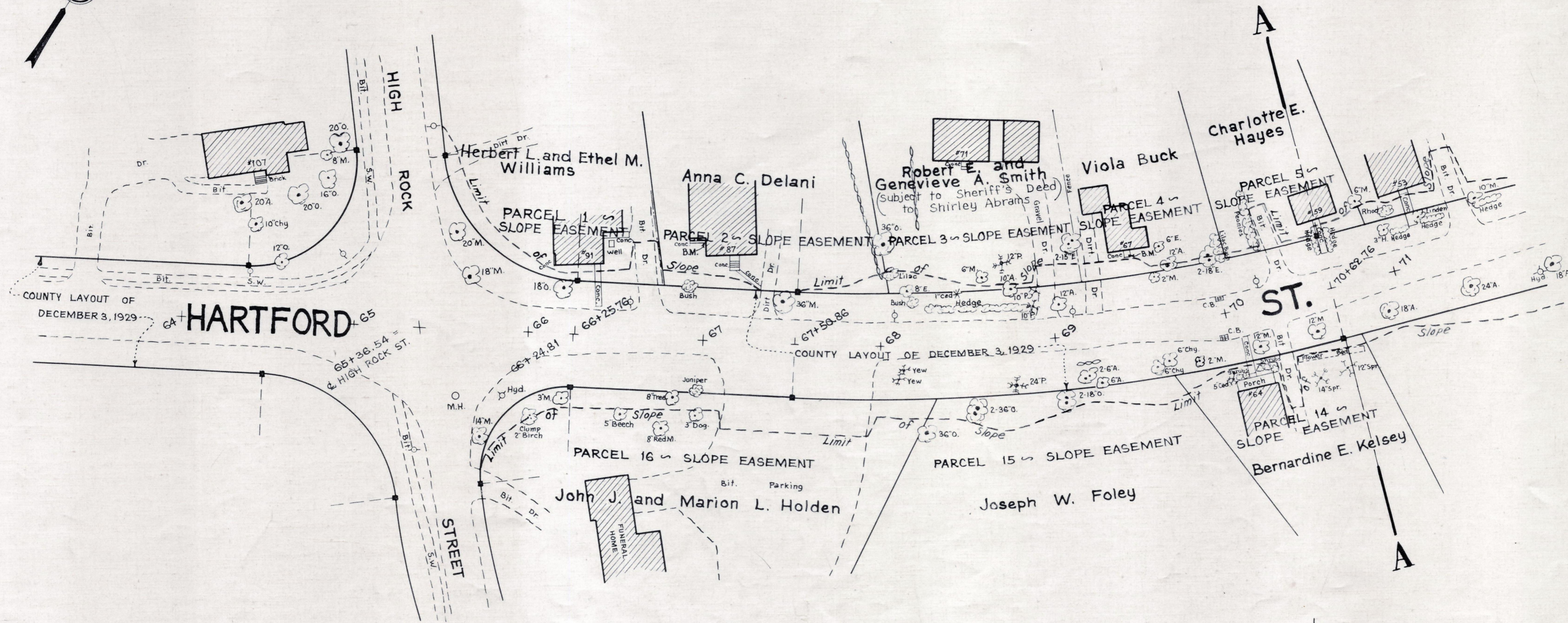
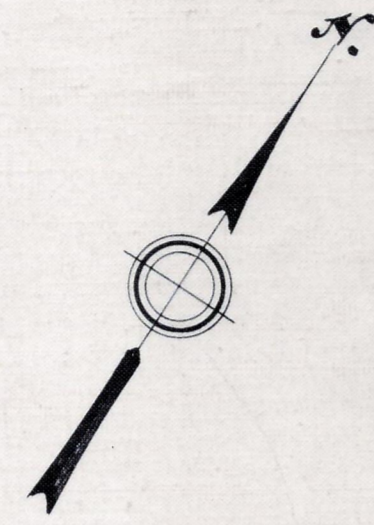
Plan and Profile showing the Relocation of HARTFORD STREET, WESTWOOD

between
HIGH ROCK STREET AND HIGH STREET
as made by the Norfolk County Commissioners
by Return dated November 24, 1970

Horizontal Scale: 1 inch = 40 feet.
Vertical Scale: 1 inch = 8 feet.

Charles C. Cain, County Engineer

James Collins CHAIRMAN.



Datum plane used for these elevations is 21.45 feet below sea level datum of 1929.

B.M. Right outer corner concrete platform of side entrance to house, Sta. 67+0; 55 ft. left. Elev. 235.49

B.M. Right outer corner concrete platform to house, Sta. 69+51; 39 ft. left. Elev. = 236.67