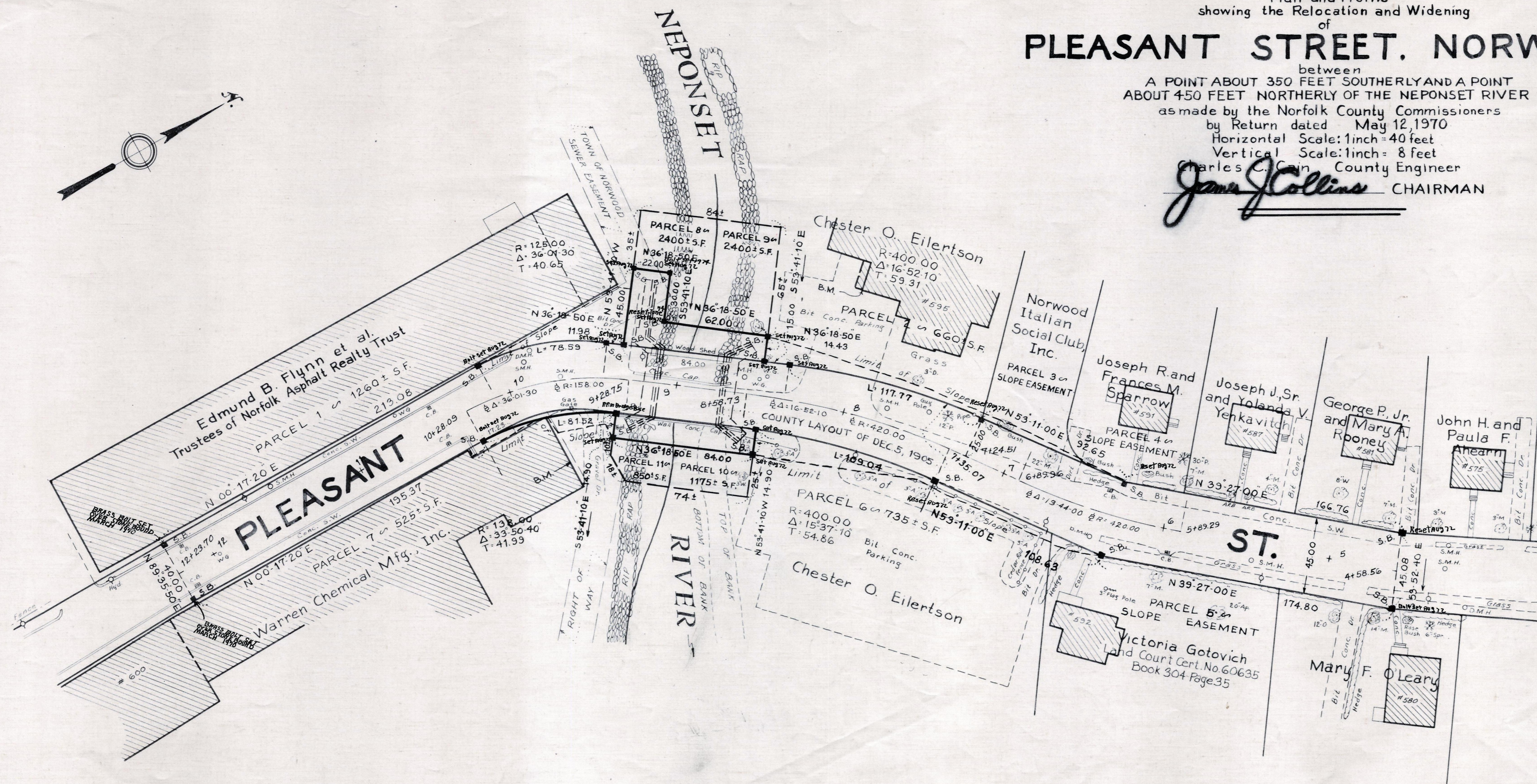
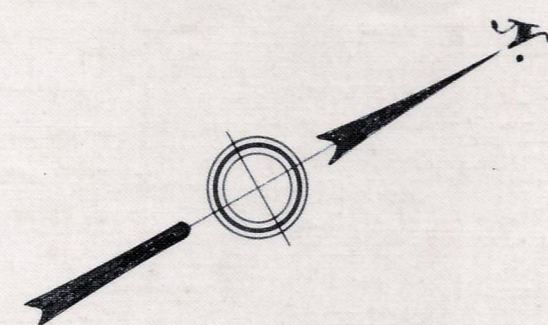


Plan and Profile
showing the Relocation and Widening
of
PLEASANT STREET, NORWOOD

between
A POINT ABOUT 350 FEET SOUTHERLY AND A POINT
ABOUT 450 FEET NORTHERLY OF THE NEPONSET RIVER
as made by the Norfolk County Commissioners
by Return dated May 12, 1970
Horizontal Scale: 1 inch = 40 feet
Vertical Scale: 1 inch = 8 feet
Charles C. Cain, County Engineer

James J. Collins CHAIRMAN



Elevations based on sea level datum of 1929

