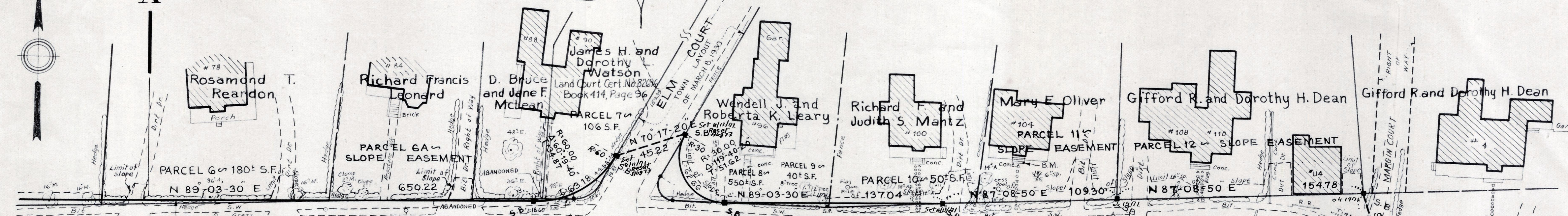
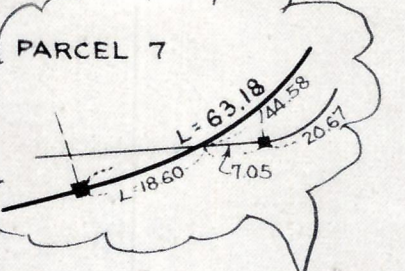


A

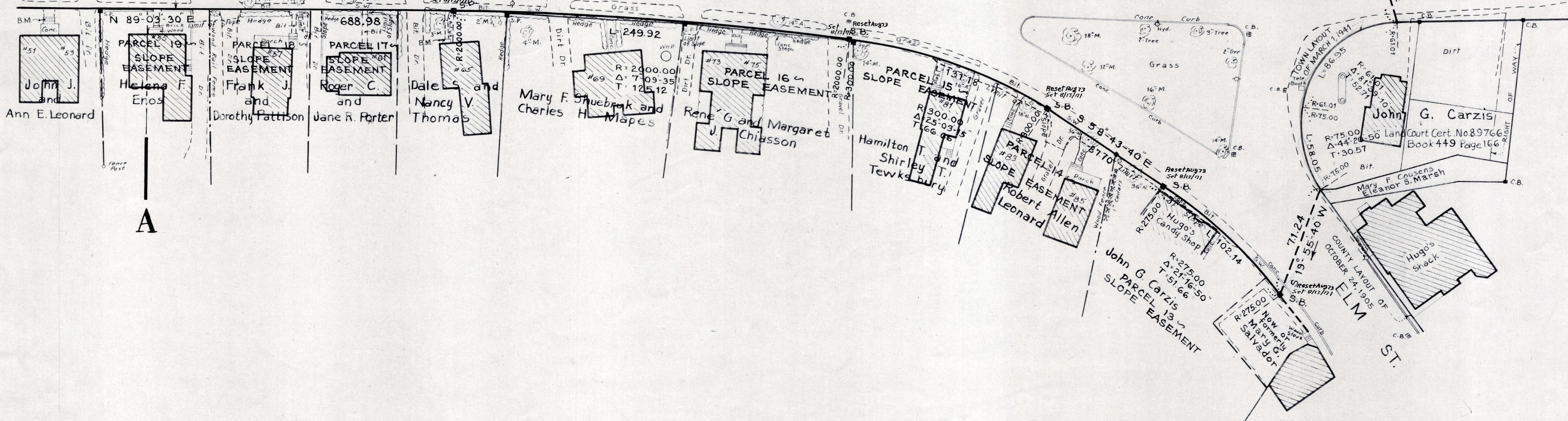
A



ELM ST.

ST.

MARGIN ST.



0.88%

0.50%

ESTABLISHED & GRADE 0.50%

Present & Surface 2.40%

B.M. Right outer corner second concrete step. Sta. 11+34.5; 350 ft. right. Elev. 11.60

B.M. Right outer corner stone step. Sta. 13+87; 46.5 ft. right. Elev. 11.82

B.M. Right outer corner bottom concrete step. Sta. 17+56; 57.0 ft. left. Elev. 12.36

