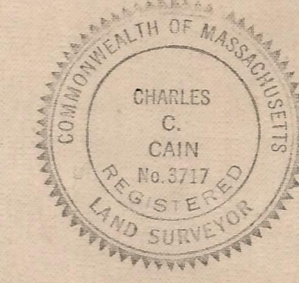
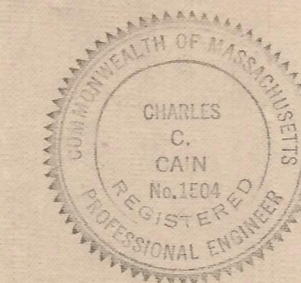


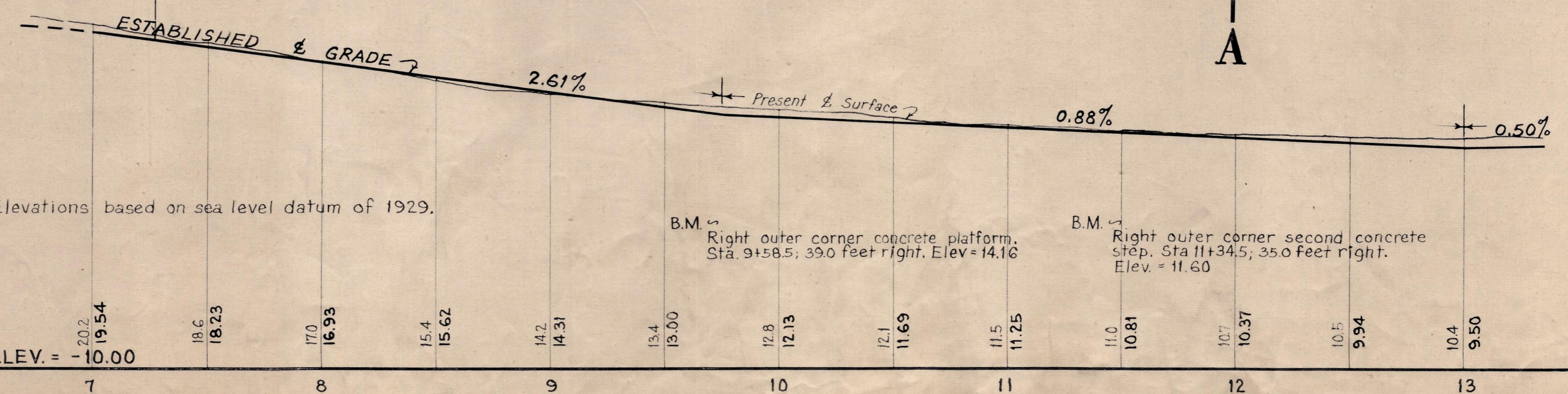
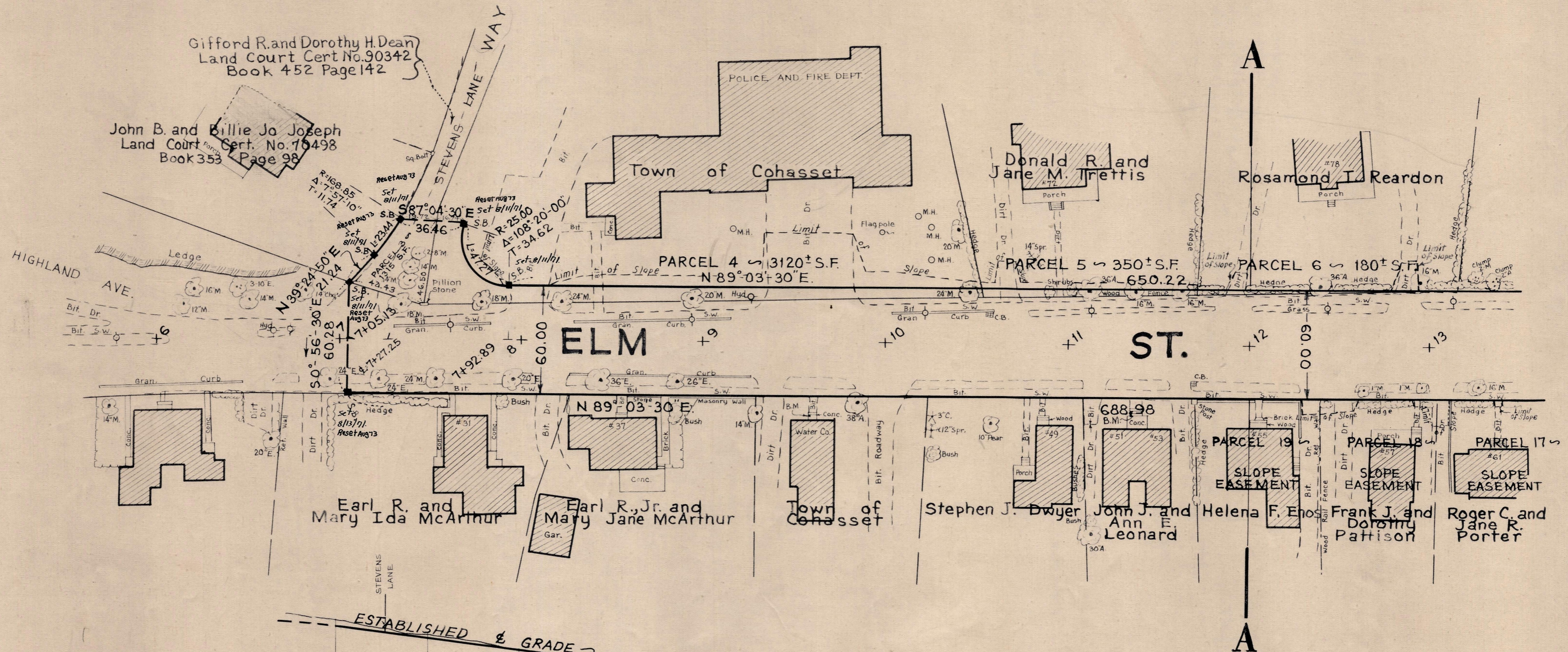
Plan and Profile
showing the Relocation and Widening
of
ELM STREET, COHASSET

between
STEVENS LANE AND MARGIN STREET
as made by the Norfolk County Commissioners
by Return dated February 9, 1971
Horizontal Scale: 1 inch = 40 feet.
Vertical Scale: 1 inch = 8 feet.
Charles C. Cain, County Engineer.

James Collins CHAIRMAN.



Charles C. Cain



Elevations based on sea level datum of 1929.

B.M. Right outer corner concrete platform.
Sta. 9+58.5; 39.0 feet right. Elev. = 14.16

B.M. Right outer corner second concrete step.
Sta. 11+34.5; 35.0 feet right. Elev. = 11.60

Station	Elev.
7	19.54
8	16.93
9	14.31
10	12.13
11	11.25
12	10.37
13	9.50