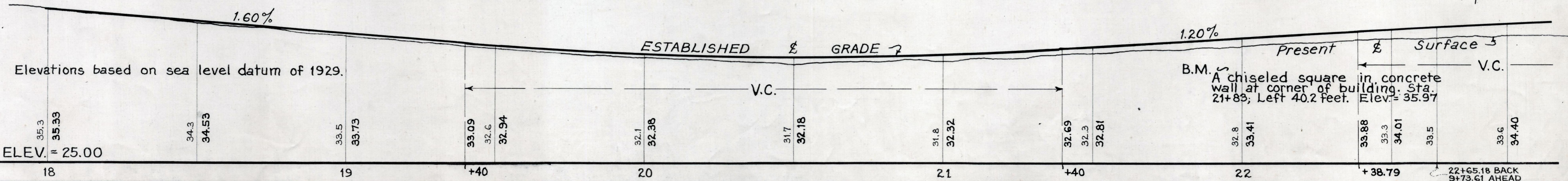
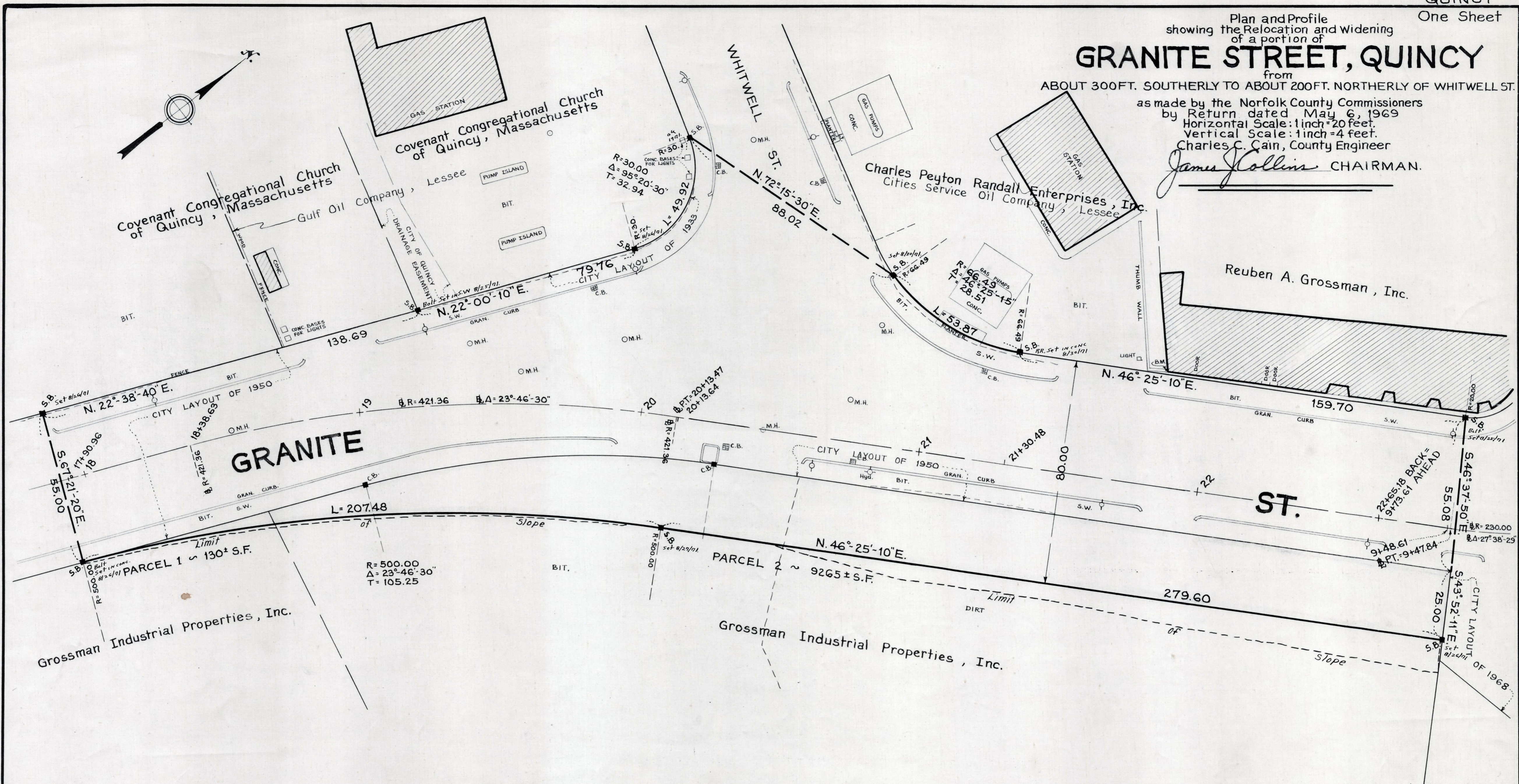


Plan and Profile
showing the Relocation and Widening
of a portion of
GRANITE STREET, QUINCY

from
ABOUT 300FT. SOUTHERLY TO ABOUT 200FT. NORTHERLY OF WHITWELL ST.
as made by the Norfolk County Commissioners
by Return dated May 6, 1969
Horizontal Scale: 1 inch = 20 feet.
Vertical Scale: 1 inch = 4 feet.
Charles C. Cain, County Engineer

James Collins CHAIRMAN.



Elevations based on sea level datum of 1929.

Station	Present Surface Elevation	Established Grade Elevation
18	35.3	35.33
19	34.3	34.53
19+40	33.5	33.73
20	33.09	32.94
20+40	32.1	32.38
21	31.7	32.18
21+40	32.69	32.32
22	32.8	32.81
22+38.79	33.88	33.41
22+65.18	33.3	34.01
22+73.61	33.5	34.40