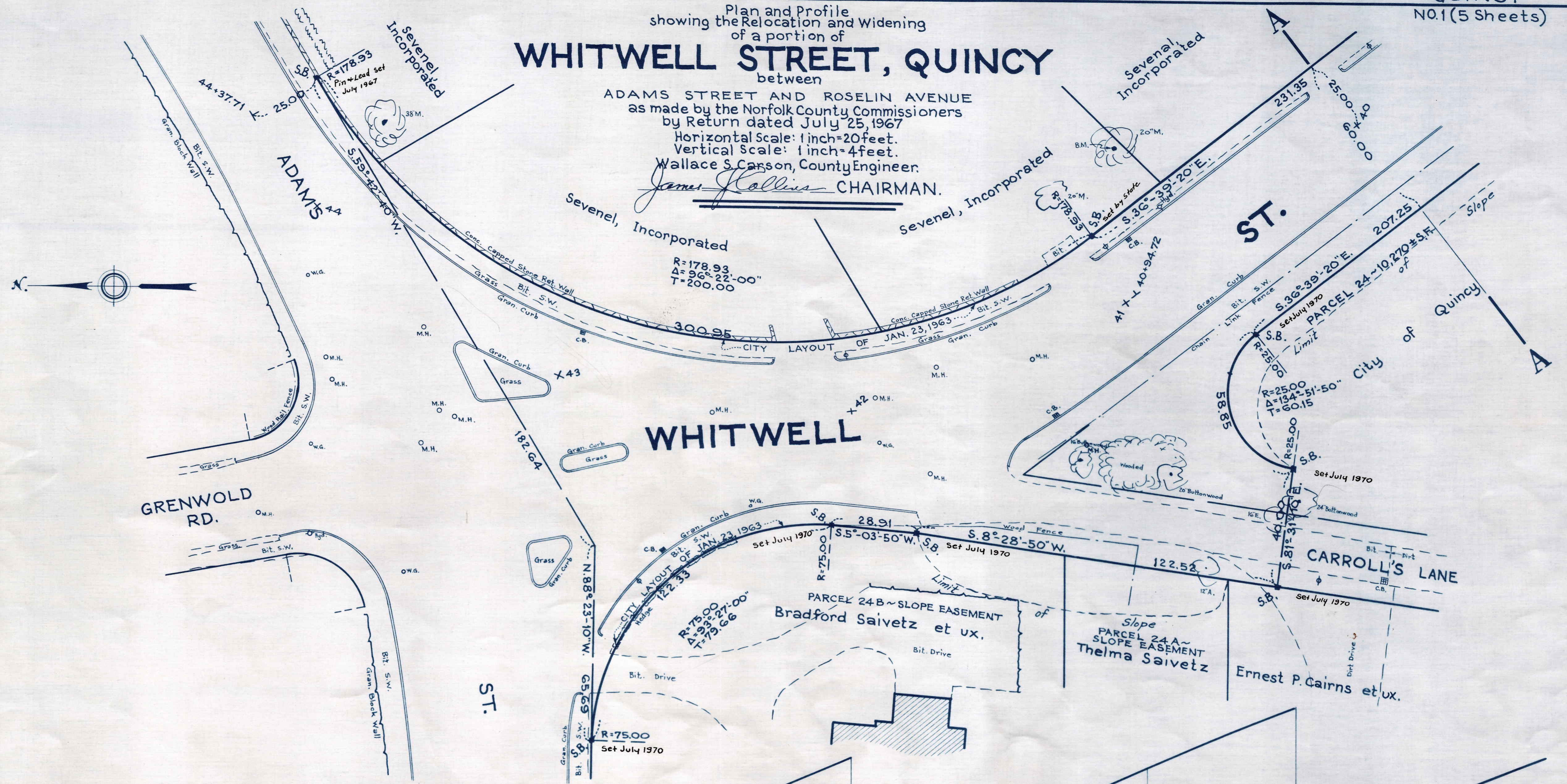


Plan and Profile  
showing the Relocation and Widening  
of a portion of  
**WHITWELL STREET, QUINCY**  
between  
ADAMS STREET AND ROSELIN AVENUE

as made by the Norfolk County Commissioners  
by Return dated July 25, 1967  
Horizontal Scale: 1 inch=20 feet.  
Vertical Scale: 1 inch=4 feet.  
Wallace S. Carson, County Engineer.  
*James J. Collins* CHAIRMAN.



Elevations based on sea level datum of 1929

B.M. ~  
A chiseled square in granite retaining wall  
on Adams St. Sta. 44+98, 21.5 ft. left. Elev. = 77.47

