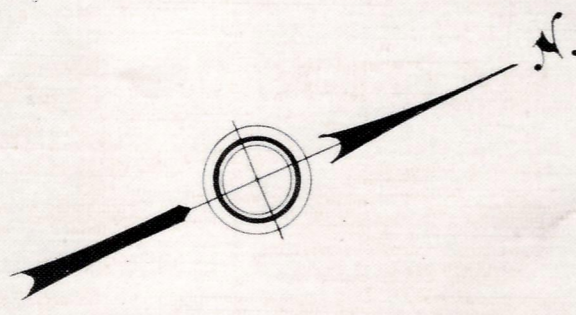


Plan and Profile  
showing the Relocation and Widening  
of a portion of  
**FORGE HILL ROAD, FRANKLIN**  
from

GROVE ST. SOUTHWESTERLY TO STATION 14+96.78  
as made by the Norfolk County Commissioners  
by Return dated January 14, 1969  
Horizontal Scale: 1 inch = 40 feet.  
Vertical Scale: 1 inch = 8 feet.  
Charles C. Cain, County Engineer.

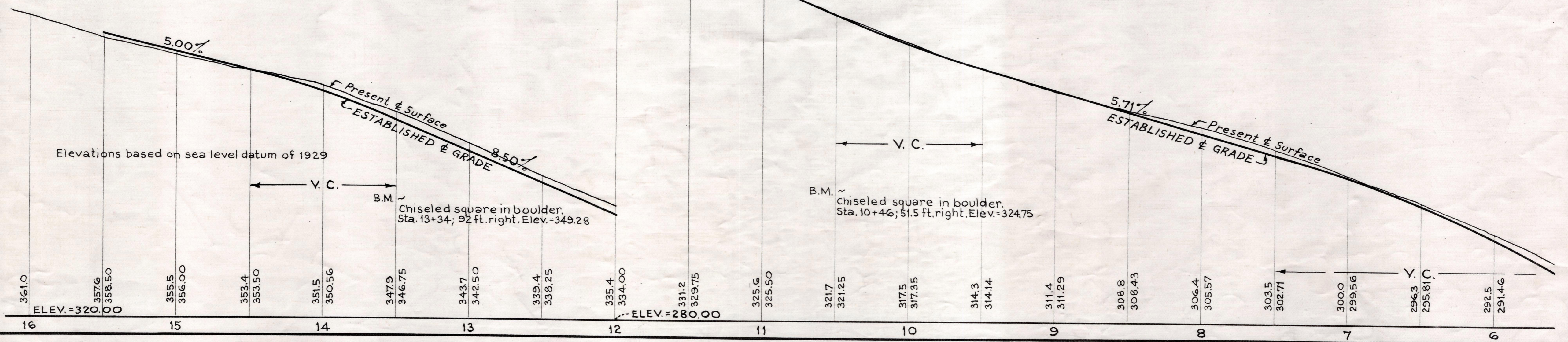
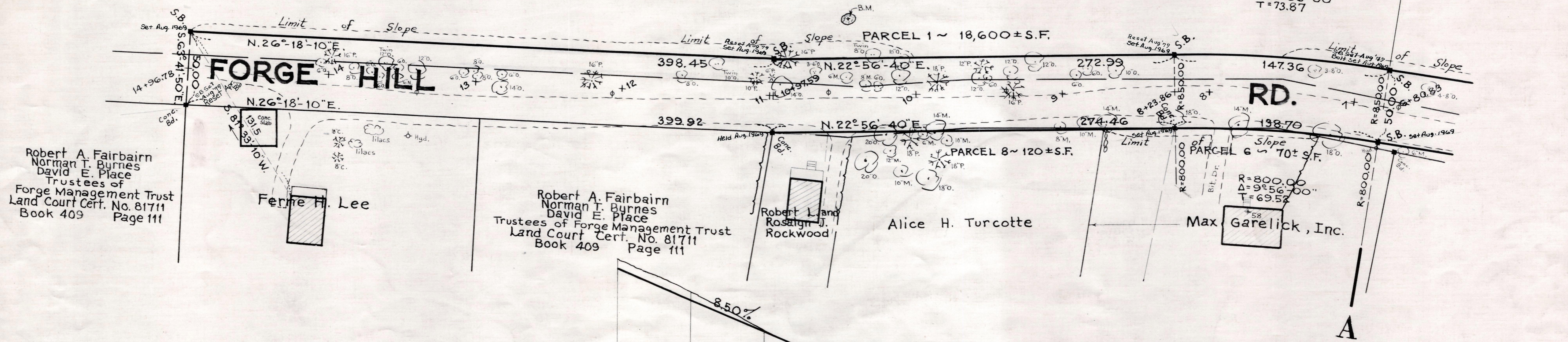
*James Collins* CHAIRMAN.



Robert A. Fairbairn  
Norman T. Byrnes  
David E. Place  
Trustees of Forge Management Trust  
Land Court Cert. No. 76976  
Book 385 Page 176

Robert A. Fairbairn  
Norman T. Byrnes  
David E. Place  
Trustees of Forge Management Trust  
Land Court Cert. No. 76976  
Book 385 Page 176

R=850.00  
Δ=9°56'00"  
T=73.87



Robert A. Fairbairn  
Norman T. Byrnes  
David E. Place  
Trustees of Forge Management Trust  
Land Court Cert. No. 81711  
Book 409 Page 111

Robert A. Fairbairn  
Norman T. Byrnes  
David E. Place  
Trustees of Forge Management Trust  
Land Court Cert. No. 81711  
Book 409 Page 111

R=800.00  
Δ=9°56'00"  
T=69.52