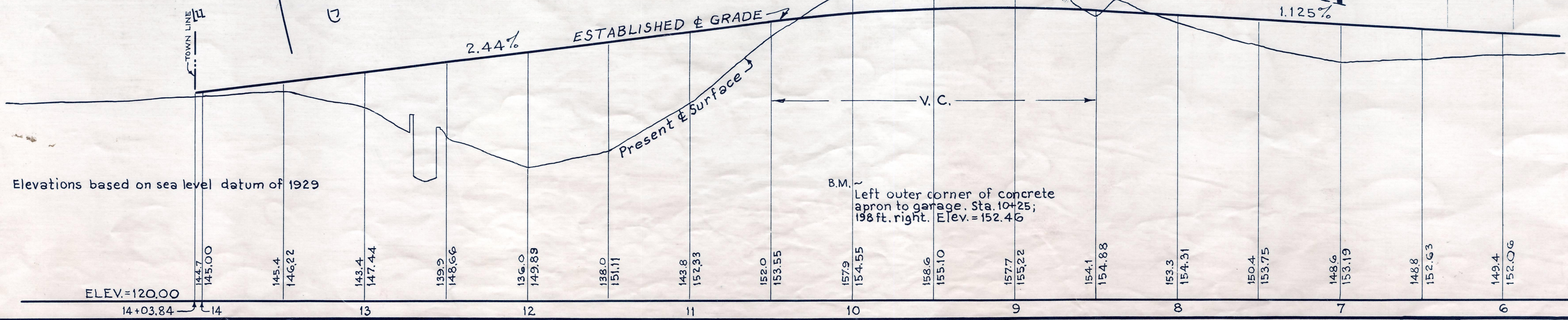
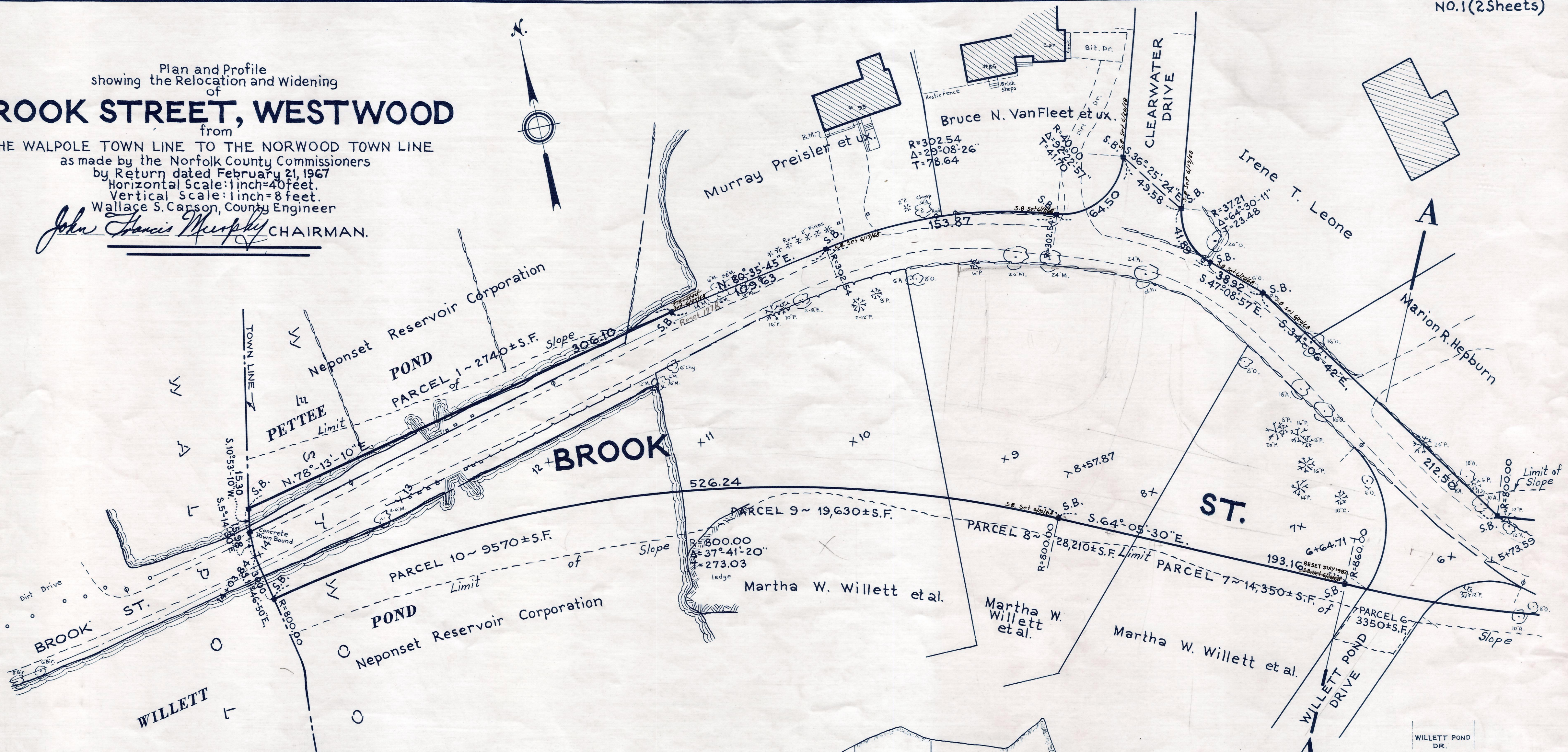


Plan and Profile
showing the Relocation and Widening
of
BROOK STREET, WESTWOOD

from
THE WALPOLE TOWN LINE TO THE NORWOOD TOWN LINE
as made by the Norfolk County Commissioners
by Return dated February 21, 1967
Horizontal Scale: 1 inch = 40 feet.
Vertical Scale: 1 inch = 8 feet.

Wallace S. Carson, County Engineer
John Francis Murphy CHAIRMAN.



Elevations based on sea level datum of 1929

B.M. ~
Left outer corner of concrete
apron to garage. Sta. 10+25;
198 ft. right. Elev. = 152.46