

Turnpike Realty Company, Inc.  
Land Court Cert. No. 34,307  
Book 172 Page 107  
Town of Dedham, Lessee

Turnpike Realty Company, Inc.  
Town of Dedham, Lessee

B

Charles River Arcade Inc.

Turnpike Realty Company, Inc.  
Town of Dedham, Lessee

PARCEL 2 ~ 54,700 ± S.F. BELLE

30.00

L A I D O U T B Y O R D E R O F T H E S U P E R I O R C O U R T D A T E D M A Y 7, 1 8 9 7

3347.96  
3320.67

PARCEL 3 ~ 55,400 ± S.F.

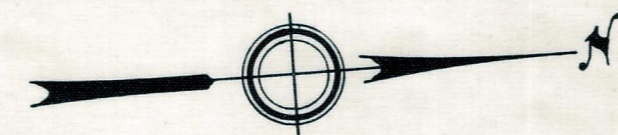
AVE.

Trustee of the property of Boston & Providence Railroad Corporation

B

C

C



Turnpike Realty Company, Inc.  
Town of Dedham, Lessee

Turnpike Realty Company, Inc.  
Town of Dedham, Lessee

BELLE

30.00

PARCEL 3 ~ 55,400 ± S.F.

L A I D O U T B Y O R D E R O F T H E S U P E R I O R C O U R T D A T E D M A Y 7, 1 8 9 7

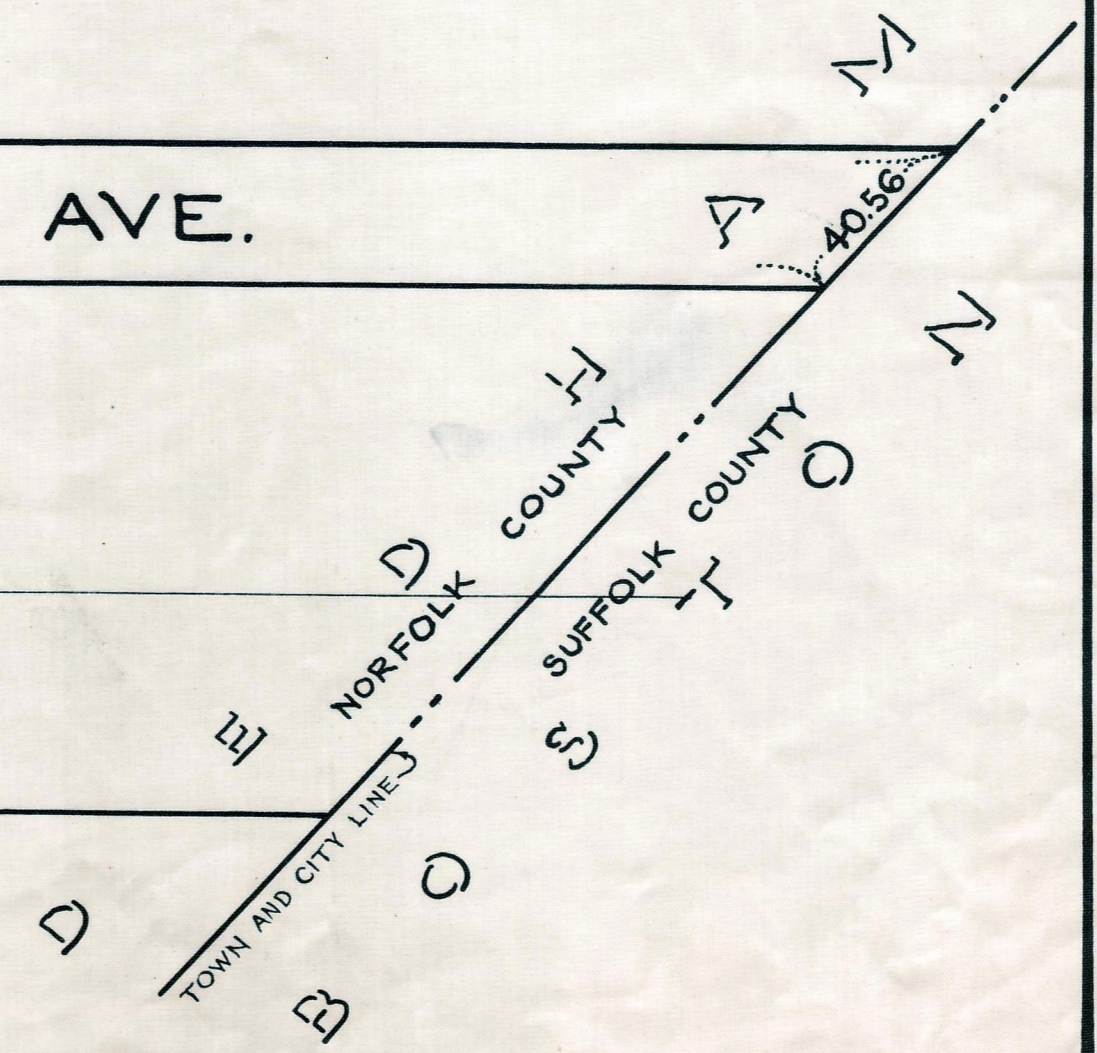
3347.96  
3320.67

AVE.

Trustee of the property of Boston & Providence Railroad Corporation

C

COMMONWEALTH OF MASSACHUSETTS  
METROPOLITAN DISTRICT COMMISSION  
SEWER EASEMENT



TOWN AND CITY LINES