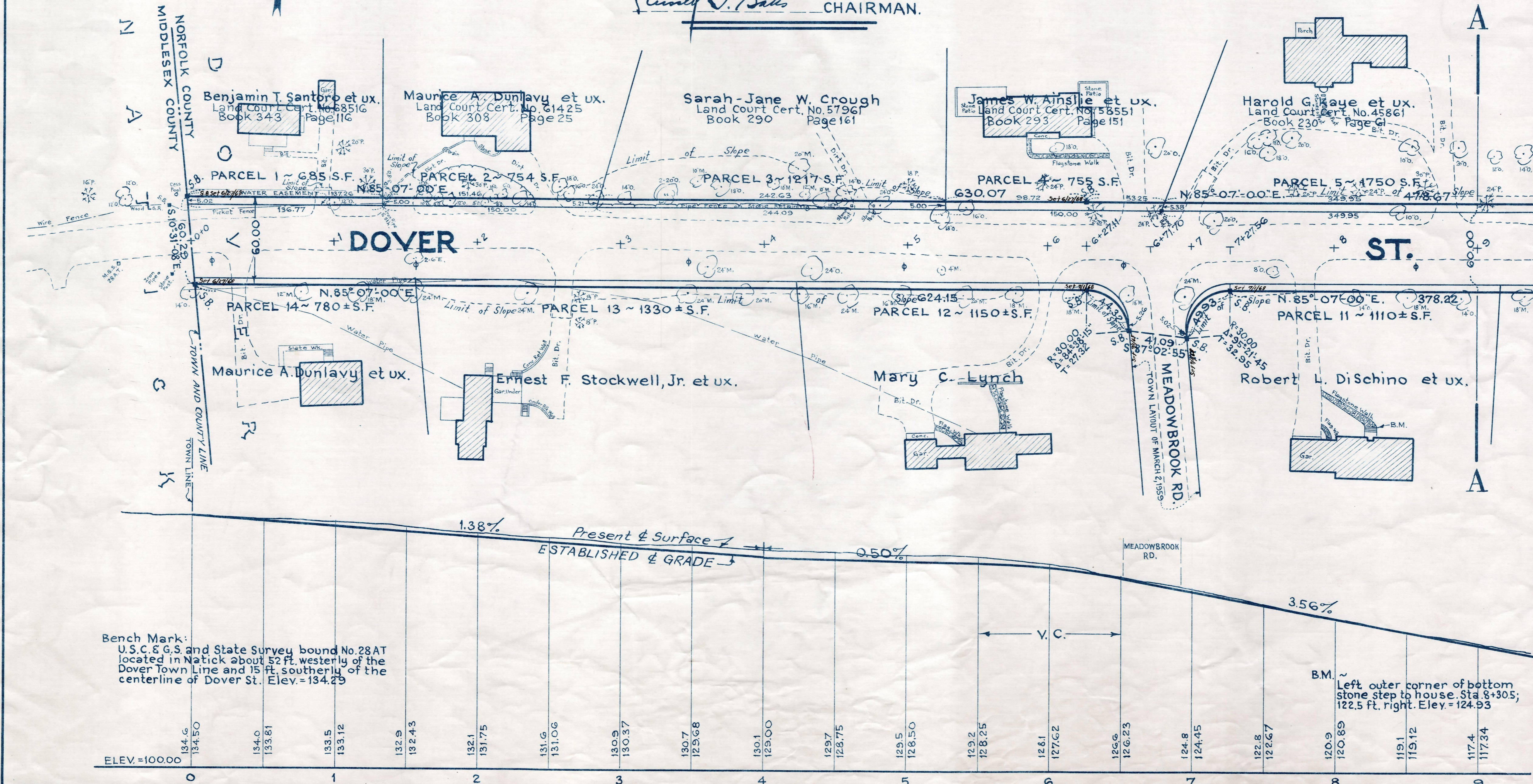


Plan and Profile  
showing the Relocation and Widening  
of a portion of  
**DOVER STREET, DOVER**  
between

THE NATICK TOWN LINE AND MAIN STREET  
as made by the Norfolk County Commissioners  
by Return dated June 9, 1964  
Horizontal Scale: 1 inch = 40 feet.  
Vertical Scale: 1 inch = 8 feet.  
Wallace S. Carson, County Engineer.

*Samuel J. Bates* CHAIRMAN.



Bench Mark:  
U.S.C. & G.S. and State Survey bound No. 28AT  
located in Natick about 52 ft. westerly of the  
Dover Town Line and 15 ft. southerly of the  
centerline of Dover St. Elev. = 134.29

B.M. ~  
Left outer corner of bottom  
stone step to house. Sta. 8+305;  
122.5 ft. right. Elev. = 124.93

Date of Entry May 11, 1966

REC. IN REGISTRY 4173-87 ~ 6-25-64  
PL. BK. 217 NO. 648-649 WITH TKG.