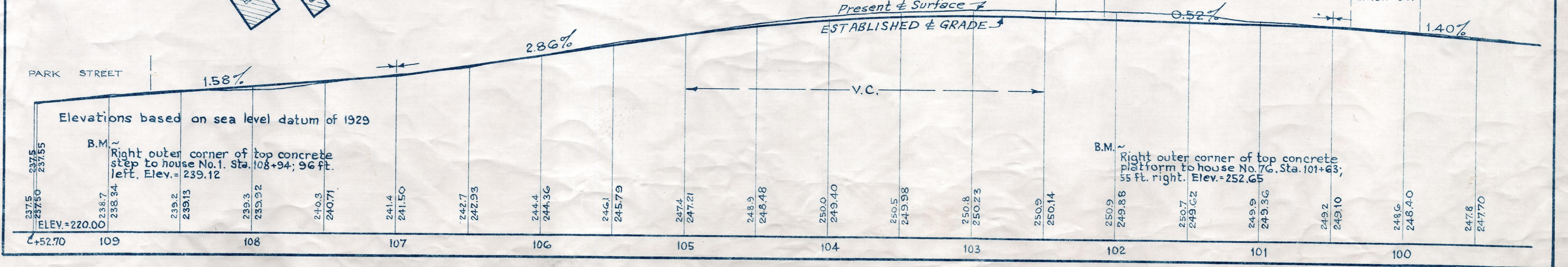
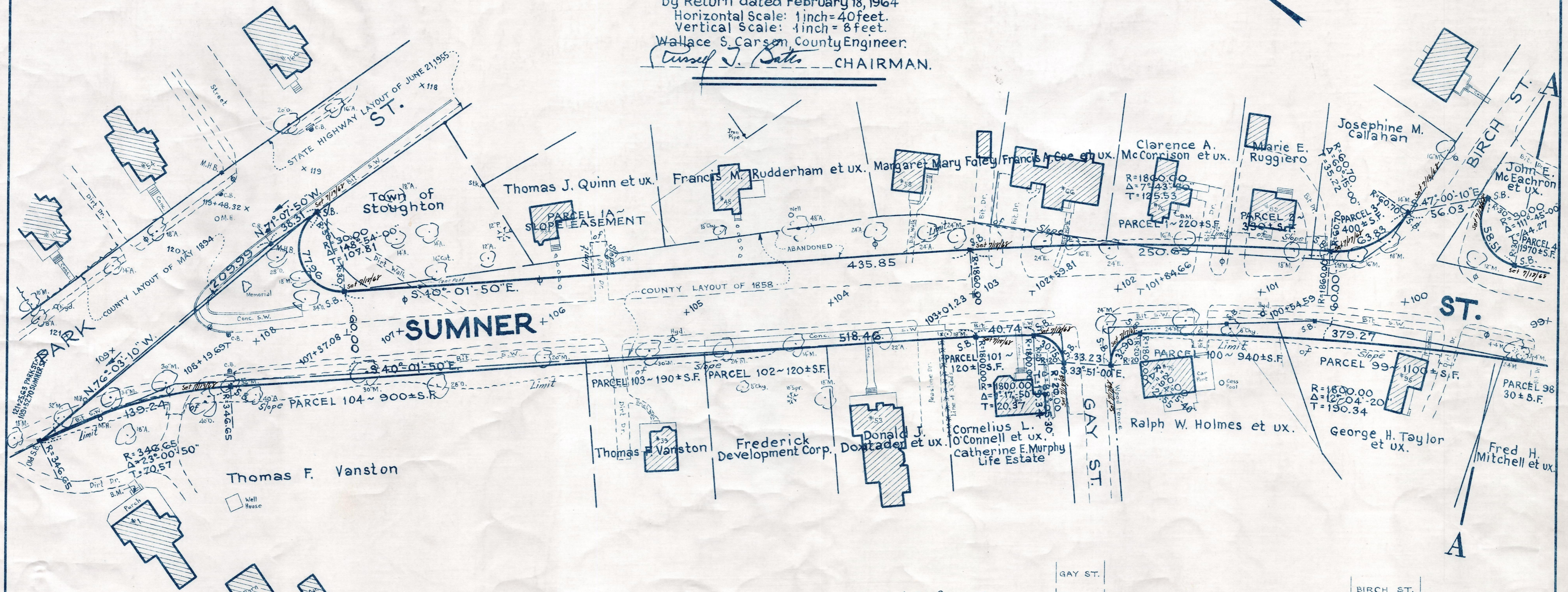
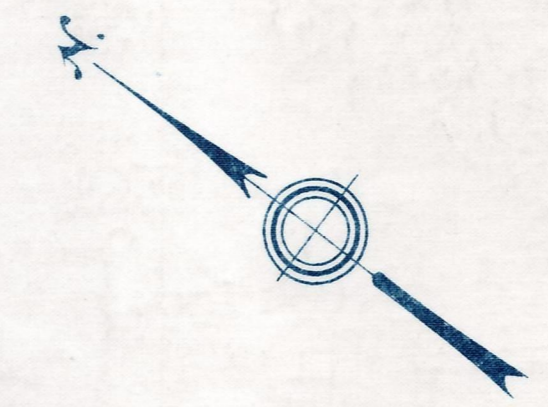


Plan and Profile
showing the Relocation and Widening
of
SUMNER STREET, STOUGHTON
between

PARK STREET AND THE BROCKTON CITY LINE
as made by the Norfolk County Commissioners
by Return dated February 18, 1964
Horizontal Scale: 1 inch = 40 feet.
Vertical Scale: 1 inch = 8 feet.
Wallace S. Carson, County Engineer.
Cassel J. Sates CHAIRMAN.



516-1

Date of Entry August 2, 1965

REC. IN REGISTRY 4146-720 ~ 3-12-64
PL. BK. 216 NO. 234-244 INCL.