

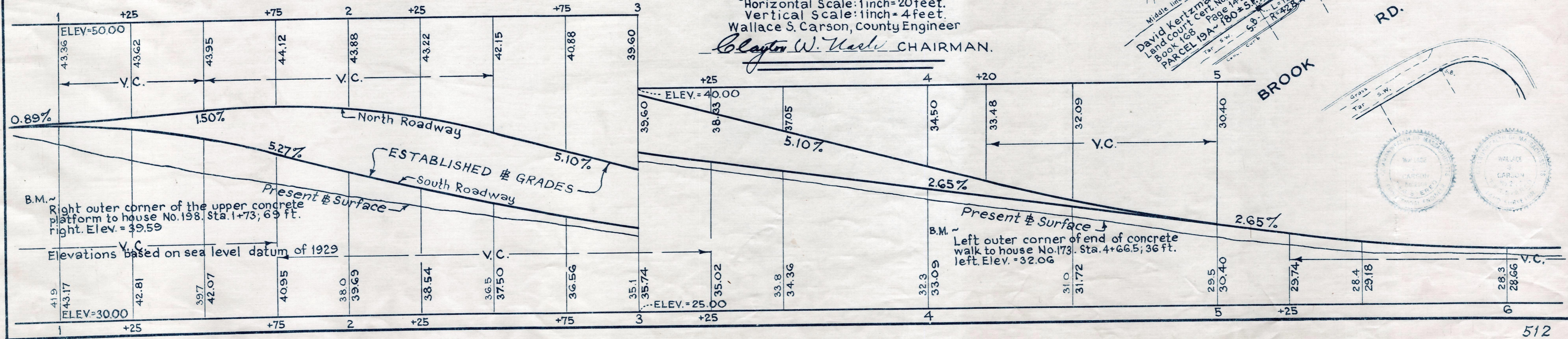
Plan and Profile  
to accompany amendment dated May 28, 1963  
to the Return for the  
Relocation and Widening  
of a portion of

# SCHOOL STREET, QUINCY

from  
GRANITE STREET TO FORT STREET  
as made by the Norfolk County Commissioners  
by Return Dated September 26, 1961  
Horizontal Scale: 1 inch = 20 feet.  
Vertical Scale: 1 inch = 4 feet.  
Wallace S. Carson, County Engineer

*Clayton W. Nash* CHAIRMAN.

Middle line of Town Brook  
David Kertzman et ux.  
Land Court Cert. No. 3545  
Book 128 Page 149  
PARCEL 19A - 180 ± S.F.



B.M. ~ Right outer corner of the upper concrete platform to house No. 198. Sta. 1+73; 69 ft. right. Elev. = 39.59

B.M. ~ Left outer corner of end of concrete walk to house No. 173. Sta. 4+66.5; 36 ft. left. Elev. = 32.06

Elevations based on sea level datum of 1929