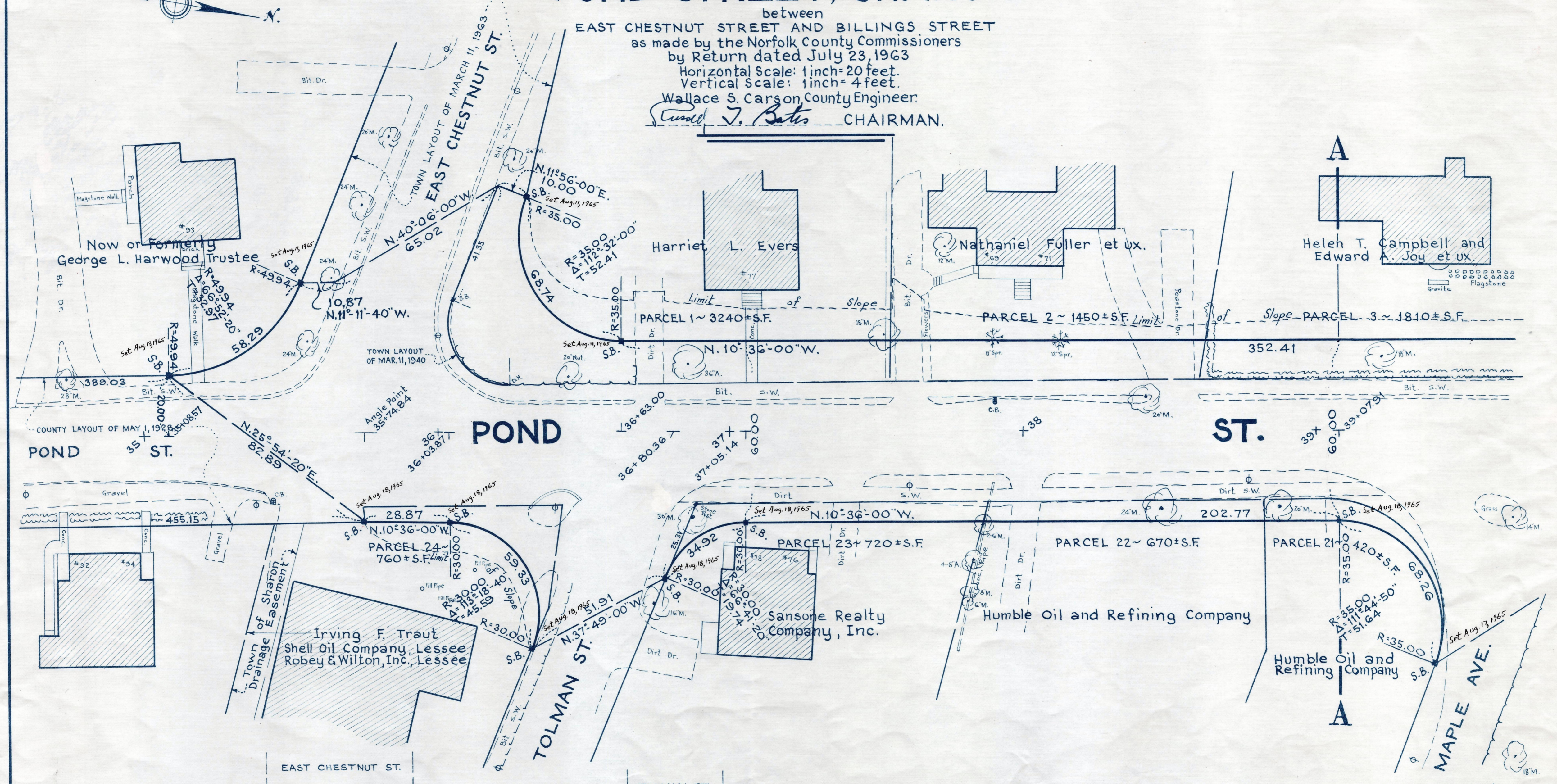
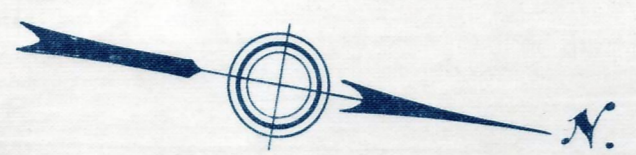


Plan and Profile  
showing the Relocation and Widening  
of a portion of  
**POND STREET, SHARON**

between  
EAST CHESTNUT STREET AND BILLINGS STREET  
as made by the Norfolk County Commissioners  
by Return dated July 23, 1963  
Horizontal Scale: 1 inch = 20 feet.  
Vertical Scale: 1 inch = 4 feet.  
Wallace S. Carson, County Engineer.  
*Walter J. Bates* CHAIRMAN.



Elevations based on sea level datum of 1929

0.70% Present & Surface			ESTABLISHED & GRADE			0.63%			0.40%										
V.C.																			
288.2	287.93	288.5	287.58	288.2	287.23	287.6	286.88	287.3	286.53	287.1	286.35	286.7	286.50	287.0	286.81	287.1	287.13	287.3	287.33
35		36				37				38				39					

REC. IN REGISTRY 4094-1 ~ 8-8-63  
PL. BK. 215 NO. 852-854 INCL.

507-1

Date of Entry - Feb. 4, 1965