

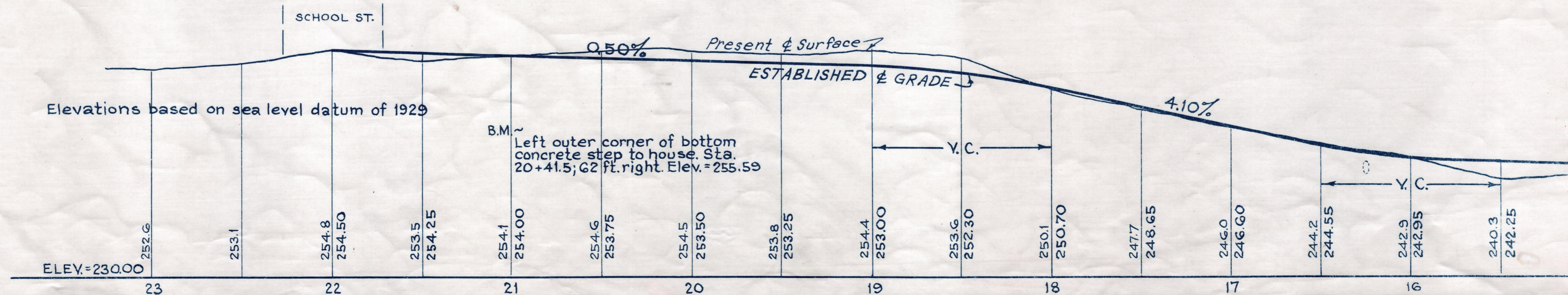
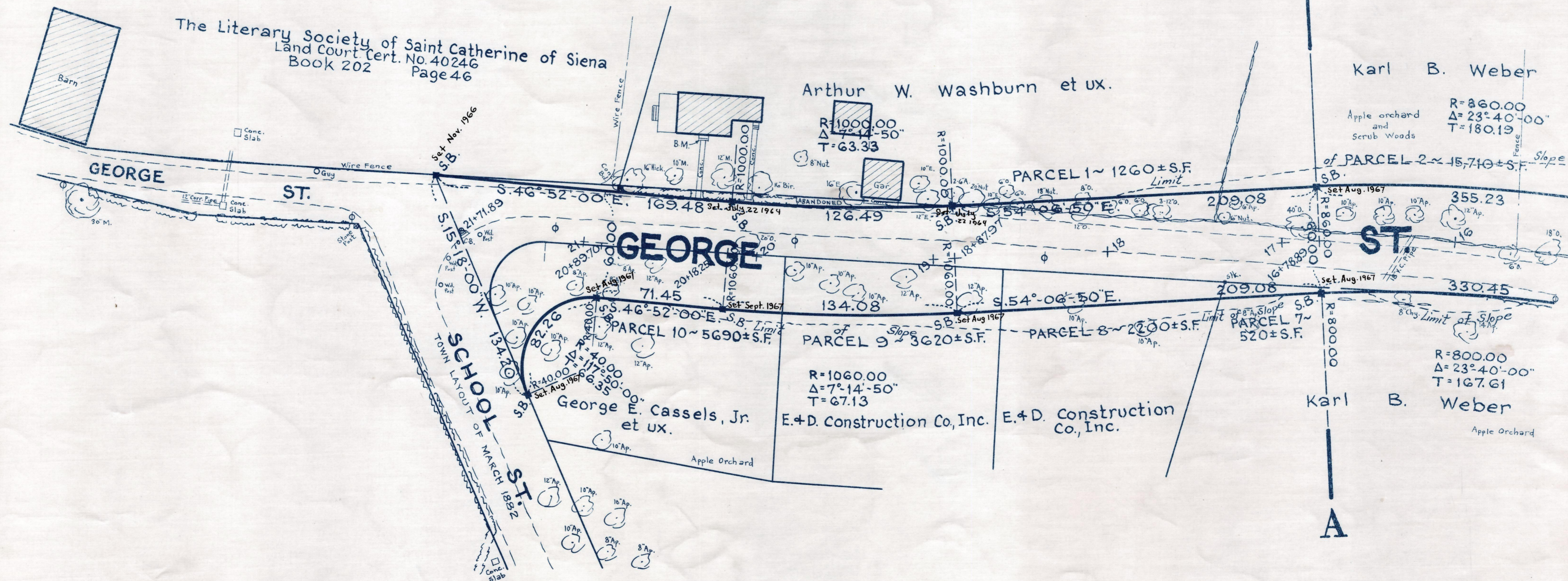
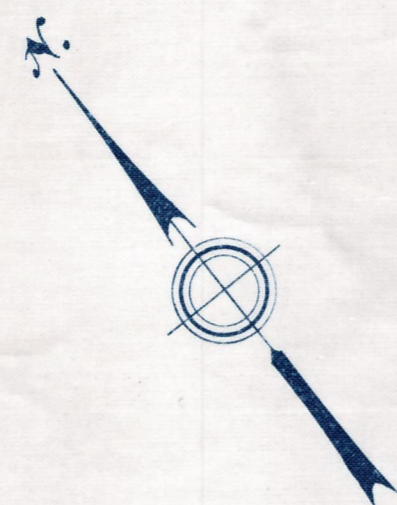
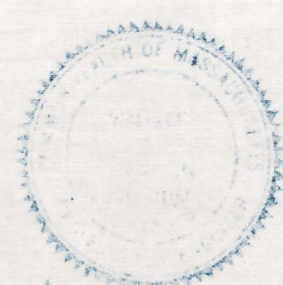
Plan and Profile
showing the Relocation and Widening
of a portion of
GEORGE STREET, PLAINVILLE

between
SCHOOL STREET AND THE BLUE STAR MEMORIAL HIGHWAY
as made by the Norfolk County Commissioners
by Return dated March 5, 1963.

Horizontal Scale: 1 inch = 40 feet.
Vertical Scale: 1 inch = 8 feet.

Wallace S. Carson, County Engineer.

Timothy J. Bates CHAIRMAN.



506-1