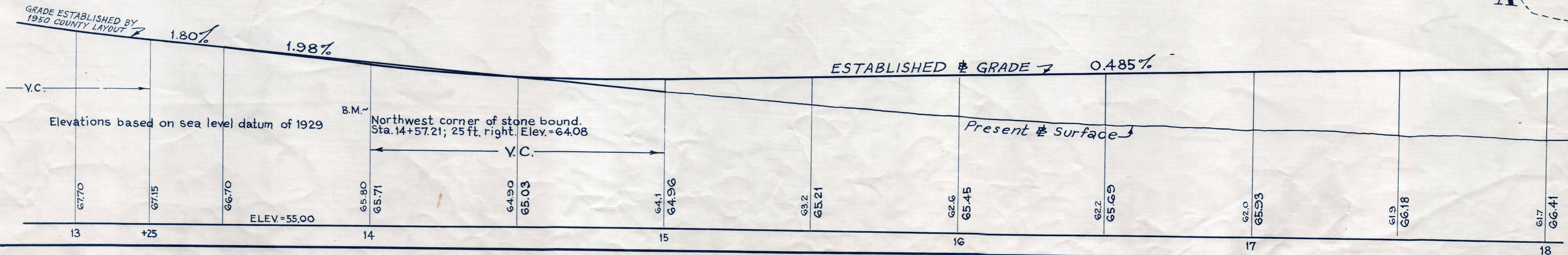
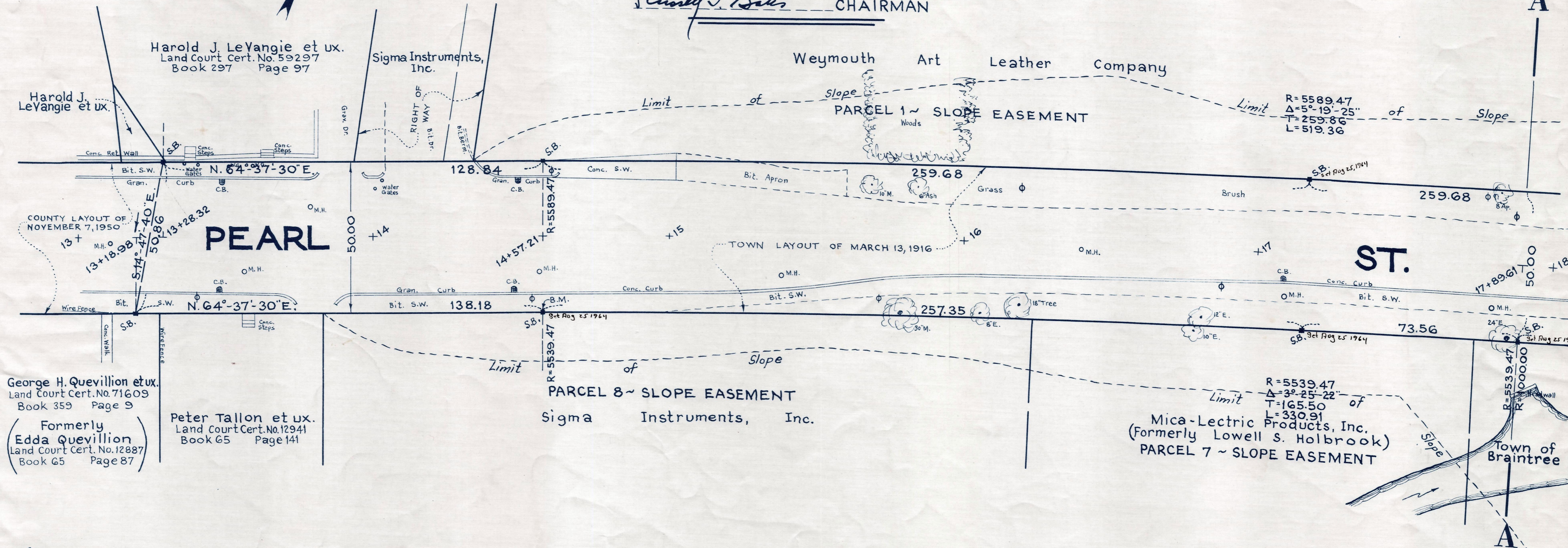
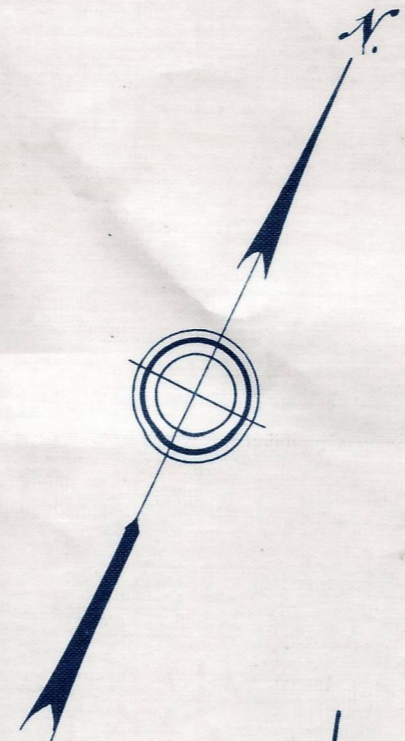


Plan and Profile
to accompany amendment dated December 26, 1962
to the Return for the
Relocation and Widening
of a portion of

PEARL STREET, BRAINTREE

from
STATION 13+28.32 TO STATION 24+92.84
as made by the Norfolk County Commissioners
by Return dated July 24, 1962
Horizontal Scale: 1 inch = 20 feet.
Vertical Scale: 1 inch = 4 feet.

Wallace S. Carson, County Engineer
Conrad J. Bates CHAIRMAN



George H. Quevillion et ux.
Land Court Cert. No. 71609
Book 359 Page 9
Formerly Edda Quevillion
Land Court Cert. No. 12887
Book 65 Page 87

Peter Tallon et ux.
Land Court Cert. No. 12941
Book 65 Page 141

Mica-Lectric Products, Inc.
(Formerly Lowell S. Holbrook)
PARCEL 7 ~ SLOPE EASEMENT
R=5539.47
Δ=3°-25'-22"
T=165.50
L=330.91

REC. IN REGISTRY 4045 440 502-1
PL. BK. 213 NO. 867-869 INCL. 8-8-62 EASE
214 31-33 of 1963
JAN. 11, 63