

Plan showing the Relocation of
a portion of the easterly line of
WASHINGTON STREET, DEDHAM

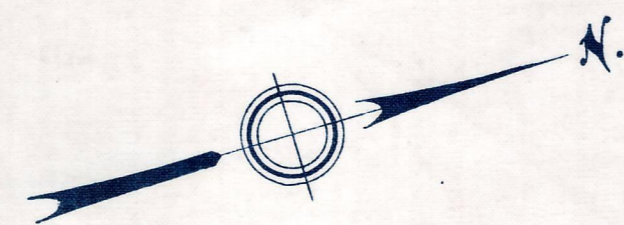
from

BRYANT STREET TO HIGH STREET
as made by the Norfolk County Commissioners
by Return dated June 27, 1961.

Scale: 1 inch = 20 feet.

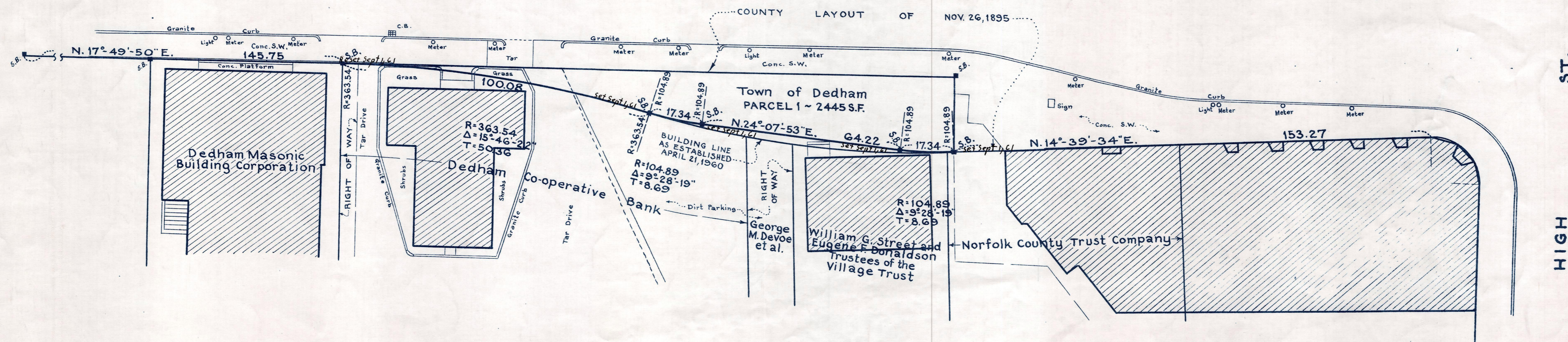
Wallace S. Carson, County Engineer

Russell J. Sita CHAIRMAN.



WASHINGTON

ST.



ST.
HIGH

