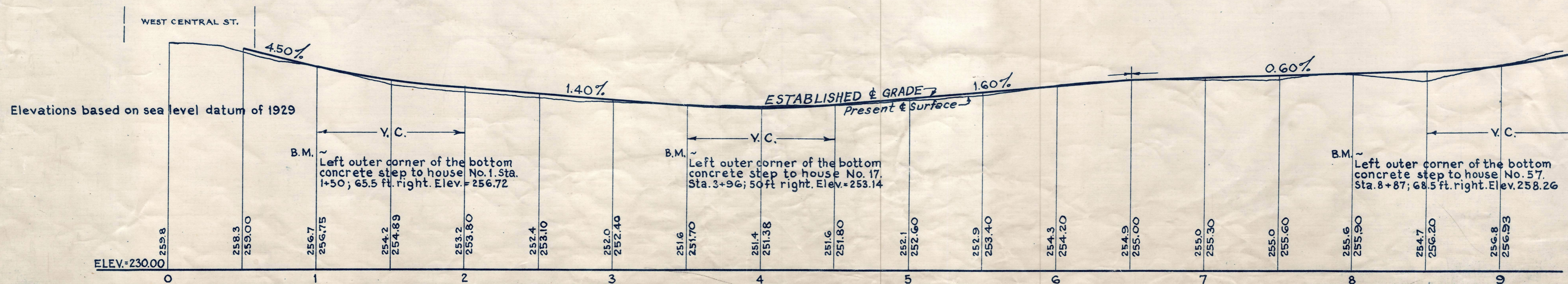
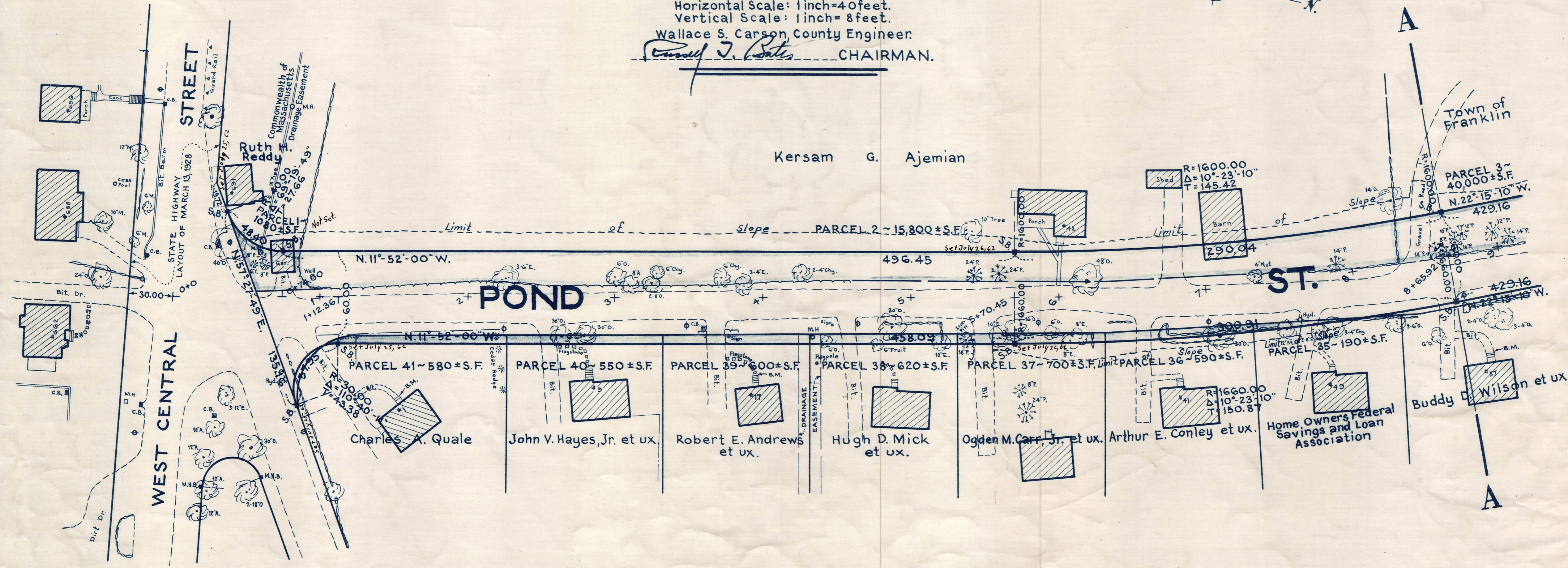
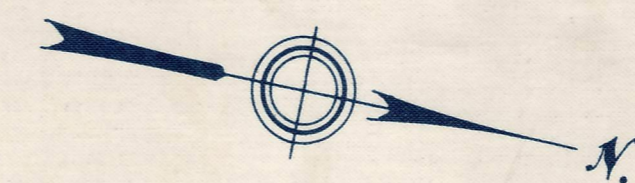


Plan and Profile
showing the Relocation and Widening
of a portion of
POND STREET, FRANKLIN
from
WEST CENTRAL STREET TO OAK STREET
as made by the Norfolk County Commissioners
by Return dated May 1, 1962
Horizontal Scale: 1 inch=40 feet.
Vertical Scale: 1 inch= 8 feet.
Wallace S. Carson, County Engineer.
Conrad J. Bates CHAIRMAN.



REC. IN REGISTRY BK. 3986-493 5-23-62
PL. BK. 212 NO. 561-566 INCL

481-1

Date of Entry June 1, 1962