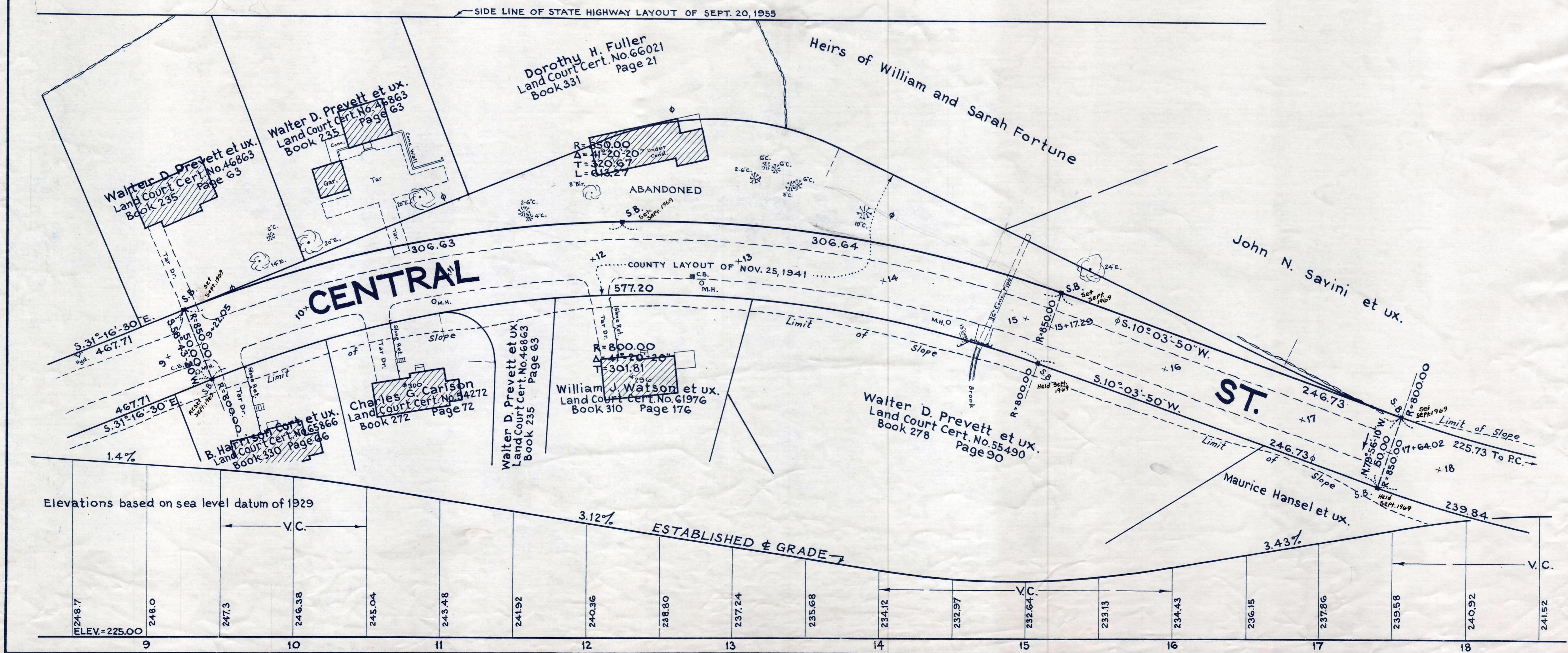
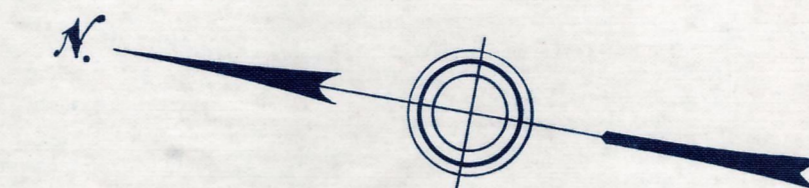


Plan and Profile  
showing the Relocation and Widening  
of a portion of  
**CENTRAL STREET, AVON**

between  
STATION 9+22.05 AND STATION 17+64.02  
as made by the Norfolk County Commissioners  
by Return dated August 23, 1960  
Horizontal Scale: 1 inch = 40 feet.  
Vertical Scale: 1 inch = 8 feet.

Wallace S. Carson, County Engineer.  
*Charles J. Bates* CHAIRMAN.



Elevations based on sea level datum of 1929