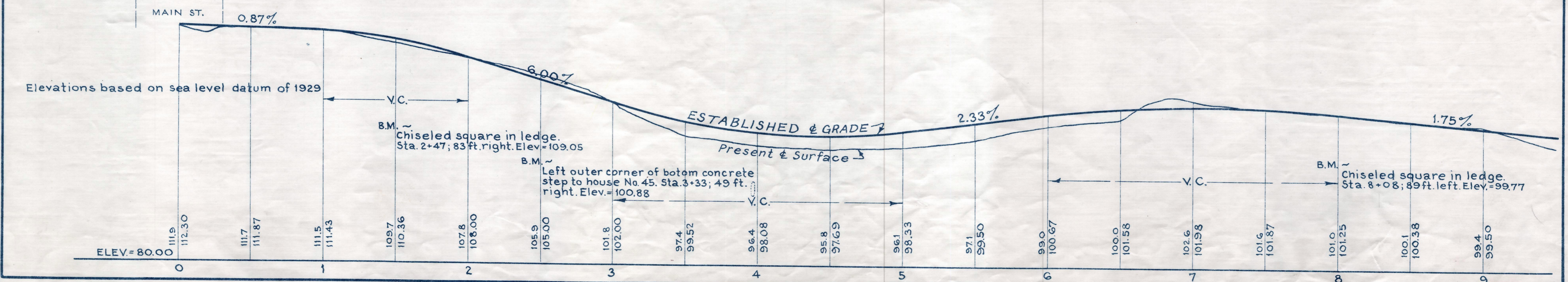
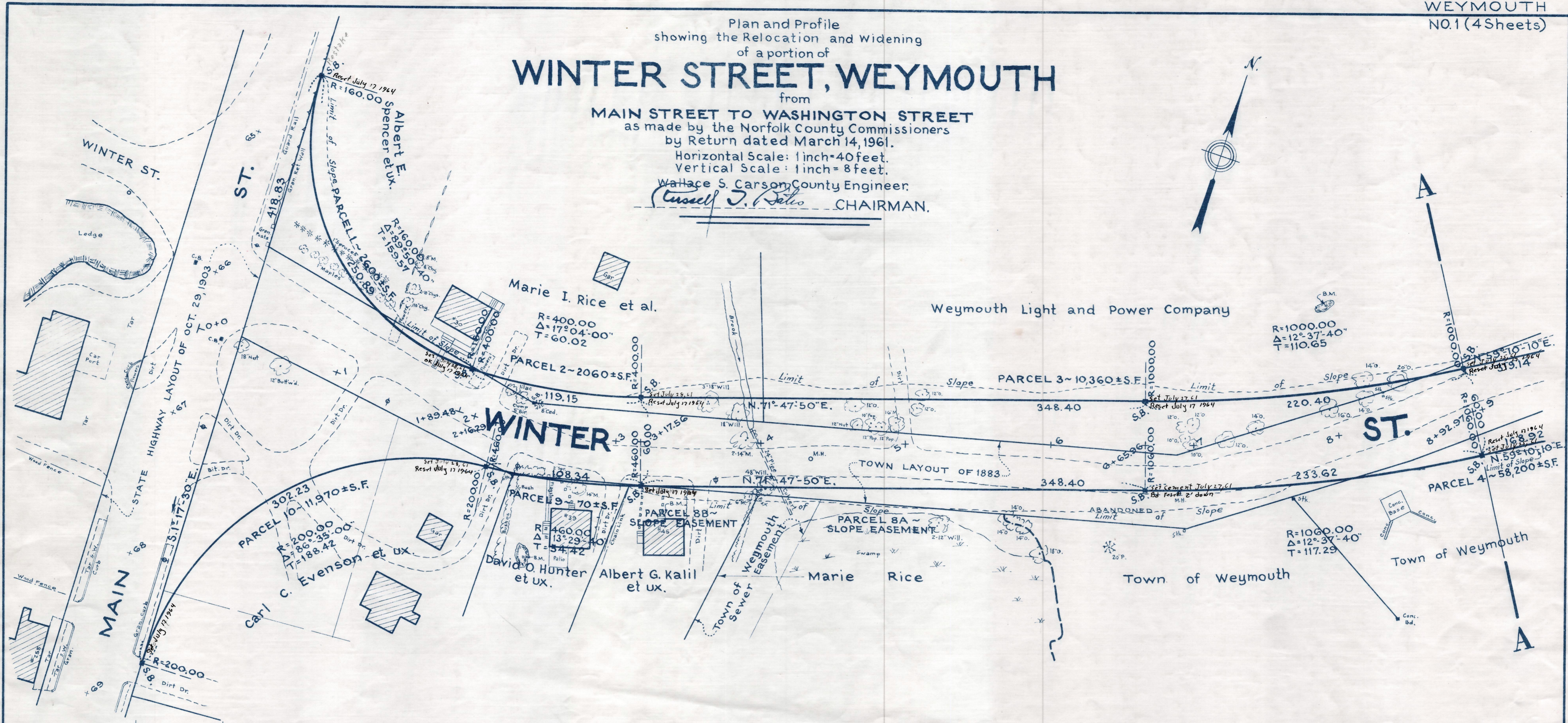
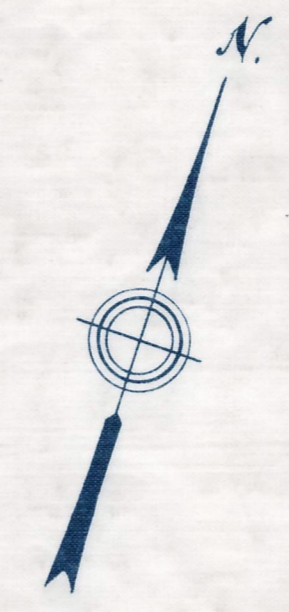


Plan and Profile
showing the Relocation and Widening
of a portion of
WINTER STREET, WEYMOUTH

from
MAIN STREET TO WASHINGTON STREET
as made by the Norfolk County Commissioners
by Return dated March 14, 1961.
Horizontal Scale: 1 inch=40 feet.
Vertical Scale: 1 inch=8 feet.
Wallace S. Carson, County Engineer.
Cassell J. Patis CHAIRMAN.



REC. IN REGISTRY ~~3903-603~~ 3885/401 ~~6-19-61~~ 4-3-1961
PL. BK. ~~211~~ NO. ~~667 & 668~~
210 330-333

474-1
Date of Entry - April 24, 1961.