

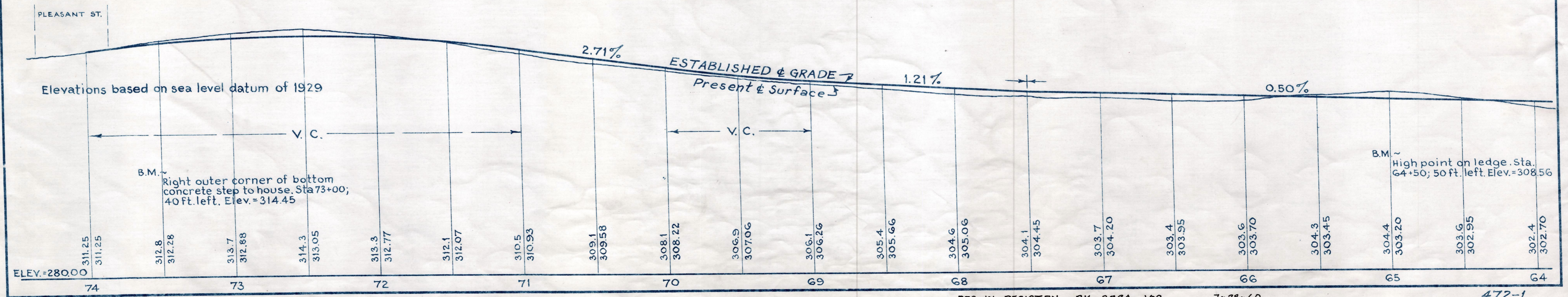
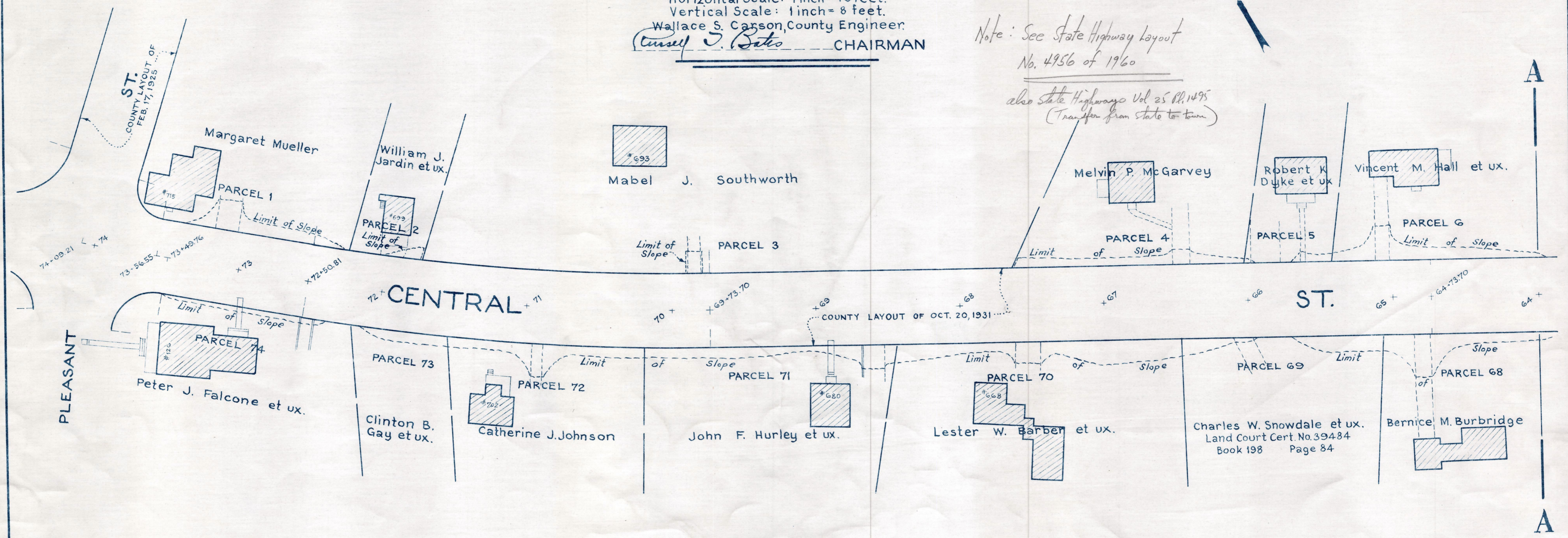
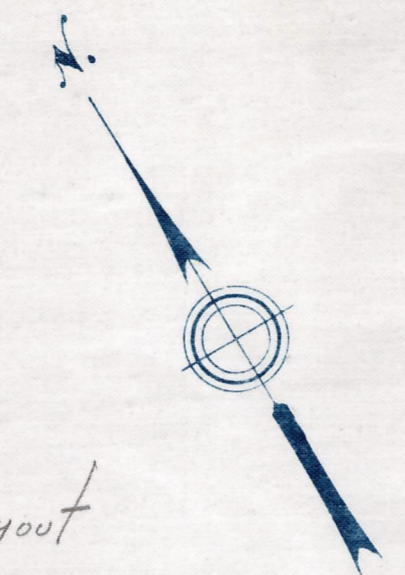
Plan showing  
Profile and Slope Easements  
for the construction of a portion of  
**CENTRAL STREET, STOUGHTON**

from  
PLEASANT ST. TO STATION 13+94.26 AT END OF STATE HIGHWAY  
as made by the Norfolk County Commissioners  
by Return dated July 5, 1960  
Horizontal Scale: 1 inch = 40 feet.  
Vertical Scale: 1 inch = 8 feet.  
Wallace S. Carson, County Engineer.

*Wm. J. Bates* CHAIRMAN

Note: See State Highway layout  
No. 4956 of 1960

also State Highways Vol 25 Pl. 1495  
(Transfer from state to town)



REC. IN REGISTRY BK 3834-103  
PL. BK. 209 NO. 935-937 INCL.

7-28-60

472-1

Date of Entry Aug 9, 1960